

FOR SALE

BRAND NEW DOUBLE STORY HOUSE IN BERWICK WATERS, READY TO MOVE IN. CONTACT AGENT FOR INSPECTION

Brand New Double story House in Berwick Waters, Ready to move in.

A rare opportunity steeped in newest pockets of Clyde North conveniently located minutes from Primary School and nearby parks. This property is in a Prime section of Clyde north.

It presents an extraordinary chance to secure a residence in Melbourne's South East, where lifestyle, leisure, and education flourish.

Surrounded by a community of modern, high-quality homes, it offers the promise of a lifestyle defined by both comfort and sophistication.

Designed to impress, this family entertainer combines premium fixtures and finishes with an elegant blend of textures, sure to appeal to even the most discerning buyers.

Key features include:

- Four spacious bedrooms
- Master suite with a walk-in robe and luxurious ensuite
- Modern kitchen with stainless steel appliances
- Open alfresco area – perfect for hosting family and friends

Located in a peaceful and established neighborhood, this home offers exceptional convenience to top schools and amenities, including Hillcrest College, Rivercrest Christian College, Grayling Primary, Kambrya College, Casey Hospital, Eden Rise Village Shopping Centre, Berwick & Beaconsfield Train Stations, and the M1 Monash Freeway.

Your daily commute becomes a breeze, ensuring that you're well-connected while still enjoying the benefits of a suburban haven.

4 BED | 3 BATH | 2 CAR

PRICE:

\$790,000 - \$865,000

OPEN FOR INSPECTION:

N/A

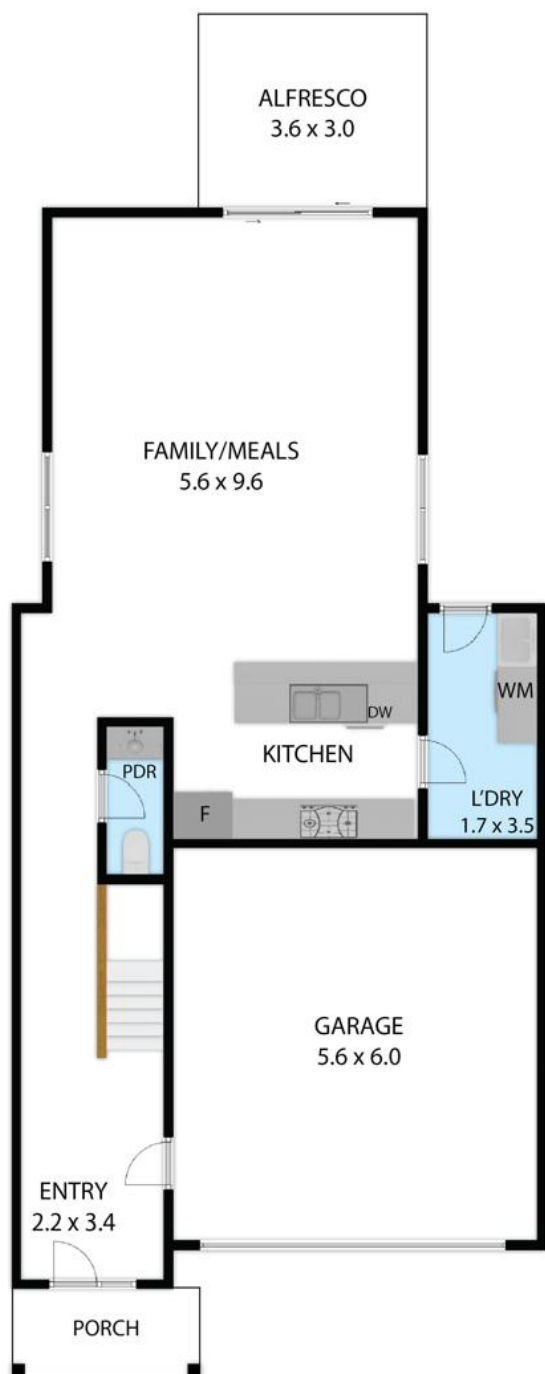


Sandeep Kaur

0461593334

sandeep.drg@atrealty.com.au

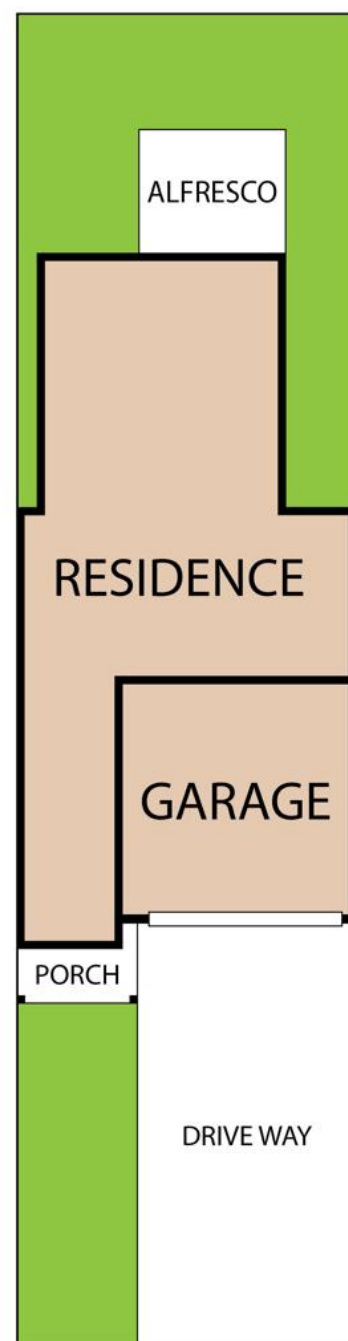
www.atrealty.com.au



GROUND FLOOR



FIRST FLOOR



Disclaimer: Please note this floor plan is for marketing purposes and is to be used as a guide only. All dimensions are estimates only and may not be exact measurements.

17 Fair Oak Avenue, Clyde North 3978

TOTAL APPROX. FLOOR AREA 204 SQ.M

Sandeep Kaur has been made to ensure the accuracy of the floor plan contained here, measurements of doors, windows, rooms and any other items are approximate and no responsibility is taken for any error, omission, or misstatement. This is for illustrative purposes only and should be used as such by any prospective purchaser.

0461593334

sandeep.drg@atrealty.com.au

www.atrealty.com.au

