



**SOLD**

## A BEAUTIFUL FAMILY HOME WITH TIMELESS CHARM

### Welcome Home

Welcome to 15 Saville Street, Eight Mile Plains. Timeless charm, enchanting character embody this stunning property that is the perfect abode for families seeking the ideal suburban lifestyle in the heart of Eight Mile Plains. Meticulously maintained and beautifully presented, this generously sized, two-storey home is situated on an expansive 601 sqm block and boasts five bedrooms, two bathrooms and multiple living areas to unwind or entertain with family and friends. Surrounded by a gorgeous garden evoking traditional Japanese design cues, this urban escape offers a unique lifestyle experience for new owners who appreciate easy living, enveloped by an inviting sense of casual luxury.

### Indoor Ambience

Stepping into this unique masterpiece, you're instantly drawn to the standout architectural features that catch your eye every way you turn. Expansive ceilings with skylights, a flowing floorplan, rustic brick and natural timbers create a loft-like ambience that oozes effortless warmth and relaxation - the exposed beams and panelled ceilings forever remain true to style. The front entrance greets the generous main lounge at the front of the home, with the connecting formal dining space at the rear accessed via a classic archway.

A semi-open plan kitchen sits conveniently off the side of the dining room, boasting an island bench with a family friendly sitting area and a cooktop. A handy utility room with a water closet is just off the kitchen, with the fifth bedroom also downstairs being an ideal retreat for guests tucked away from the rest of the sleeping quarters upstairs - which is ideal for family members with mobility issues. Ascending the timber steps, a charming landing forms the gateway to four large bedrooms: the sumptuous master with a walk-in robe and ensuite, two bedrooms with built-in robes and another overlooking the front of the property currently set up as a home office - all but one offering stunning polished timber floors. A large covered balcony runs the length of the back three bedrooms, letting in abundant natural light while showcasing serene views over the lush backyard. The upstairs layout also offers a shared bathroom with a full-size tub - a must for growing, young families. Other key property features include an alarm system, a safe, security screens and doors, solar power and plenty of well-considered storage space.

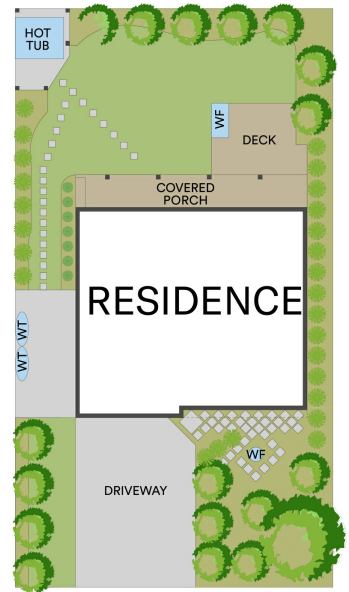
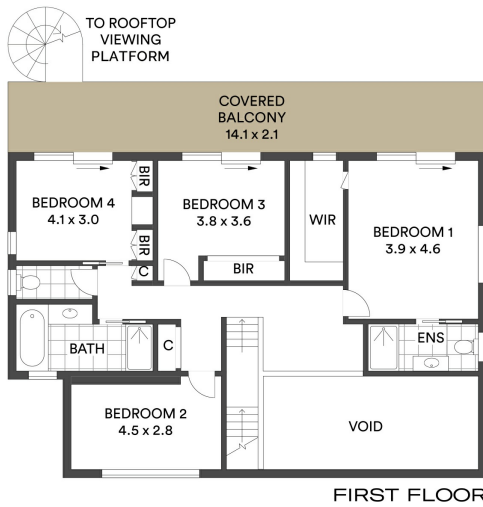
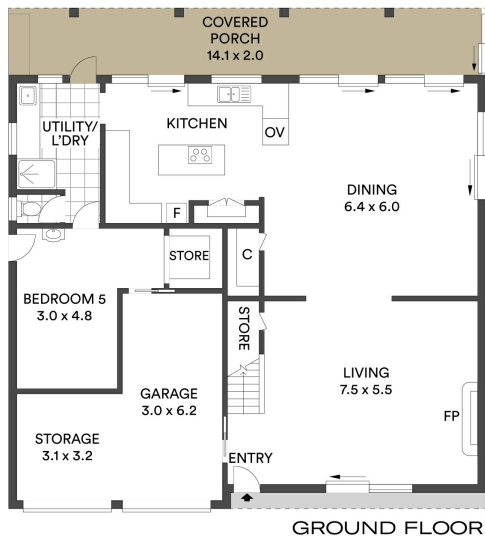
**5 BED | 3 BATH | 1 CAR**

**PRICE:**  
**\$1,417,500**

**OPEN FOR INSPECTION:**  
**N/A**



**Mitch Schenning**  
**0407901342**  
mitch.schenning@atrealty.com.au  
[www.atrealty.com.au](http://www.atrealty.com.au)



INTERNAL AREA: 292 M<sup>2</sup>  
EXTERNAL AREA: 58 M<sup>2</sup>

THE INFORMATION CONTAINED IN THIS DOCUMENT HAS BEEN PROVIDED BY THIRD PARTIES. THE AGENCY HAS NOT CHECKED THE INFORMATION AND MERELY PASSES IT ON, NOT HAVING A BELIEF ONE WAY OR THE OTHER AS TO ITS ACCURACY. INTERESTED PARTIES SHOULD MAKE AND RELY UPON THEIR OWN ENQUIRIES



15 Saville St, Eight Mile Plains

Disclaimer: Please note this floor plan is for marketing purposes and is to be used as a guide only. All dimensions are estimates only and may not be exact measurements.