



**SOLD**

## ENDLESS SUMMER FUN AND FAMILY ADVENTURES

Discover your dream home in the picturesque Horsley! This spacious 5-bedroom single-level residence at 36 Highland Park Drive is perfectly situated on a convenient, flat 589m<sup>2</sup> corner block, offering an ideal blend of size, comfort, and year-round outdoor entertaining.

As you enter, you'll find beautifully designed living spaces that seamlessly flow to create a welcoming atmosphere. The master bedroom features air conditioning, a designer ensuite and a walk-in robe, providing a peaceful and private retreat. The four additional bedrooms are equipped with ceiling fans and built-in robes, while the 5th bedroom also offers flexible potential as a media room or extra living space. The main bathroom combines style and practicality with its bathtub, shower, vanity, and separate toilet, ensuring convenience for the whole family. The open-plan kitchen is a culinary delight, featuring a 5-burner gas stove top, stainless steel appliances and a breakfast bar, perfect for gatherings. The kitchen adjoins a huge dining and living room, boasting sliding concertina doors to create a formal lounge area, perfect for a large family. You also have ample parking thanks to a double garage with multiple internal access points and three additional car spaces, providing plenty of off-street parking for family and friends. Outside, enjoy ultimate relaxation by the sparkling in-ground swimming pool and outdoor entertaining, perfect for summer family adventures.

Additional highlights include a solar power system, solar pool heating and two storage sheds for your convenience. Located in one of Horsley's most sought after streets, you're only just minutes away from bus stops, parks, Horsley Shops, preschools, local primary and high schools and Dapto Mall. Don't miss the opportunity to make this beautiful house your home! Contact Peter Bullman for more information.

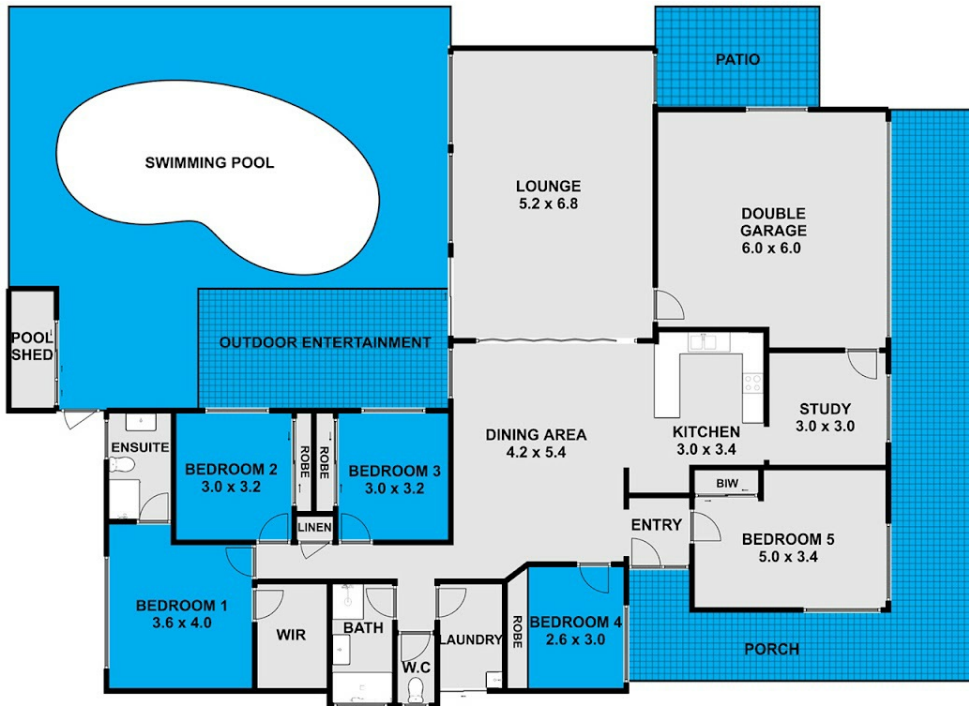
**5 BED | 2 BATH | 2 CAR**

**PRICE:**  
**\$1,035,000**

**OPEN FOR INSPECTION:**  
**N/A**



**Peter Bullman**  
**0401394394**  
peterb@atrealty.com.au  
[www.atrealty.com.au](http://www.atrealty.com.au)



The floor plan including furniture, fixture measurements and dimensions are approximate and for illustrative purposes only.  
@realty gives no guarantee, warranty or representation as to the accuracy and layout.  
All enquiries must be directed to the agent, vendor or party representing this floor plan.

### 36 Highland Park Drive, Horsley

Disclaimer: Please note this floor plan is for marketing purposes and is to be used as a guide only. All dimensions are estimates only and may not be exact measurements.