



FOR SALE

LUXURY MODERN WATERFRONT LIFESTYLE - MUST BE SEEN TO APPRECIATE! - ONE OF BRIBIE'S FINEST

Life can be one long holiday living in this beautifully renovated Bribie Island deluxe canal home. With spectacular sunsets, water views, private pontoon on a secure canal the home offers something special for discerning buyers.

The home has been renovated with modern flair, has a sleek well appointed kitchen, ample living space and plenty of off street secure parking. Close to all amenities on the Island and offering a wonderful luxurious lifestyle.

The home is set on 800 sqm block and is only steps from your own waterfront and pontoon, offering a lifestyle where you can enjoy getting out on the water in a kayak or boat and grab your fishing rod to take advantage of the lifestyle presented.

Features of the home include the following:

- beautifully renovated as new low set brick rendered canal home
- private pontoon
- high-end kitchen with Bosch appliances, 900mm oven, stone benchtops, quality large drawers, and premium fixtures
- 2 generous living areas,
- study, plus 4 bedrooms with built-ins robes
- 2 modern bathrooms
- ceiling fans.
- the master bedroom has long water views with en-suite; including deluxe spa bath, walk-in robe .
- the living areas are light filled,
- easy care low maintenance gardens
- a cocktail bar complete with plumbing and fridge space,
- separate toilet and powder room
- ducted air conditioning and heating throughout,
- spa bath in family bathroom,
- spear
- water tanks
- plenty of storage throughout.

5 BED | 2 BATH | 2 CAR

PRICE:

offers above \$2,000,000

OPEN FOR INSPECTION:

N/A

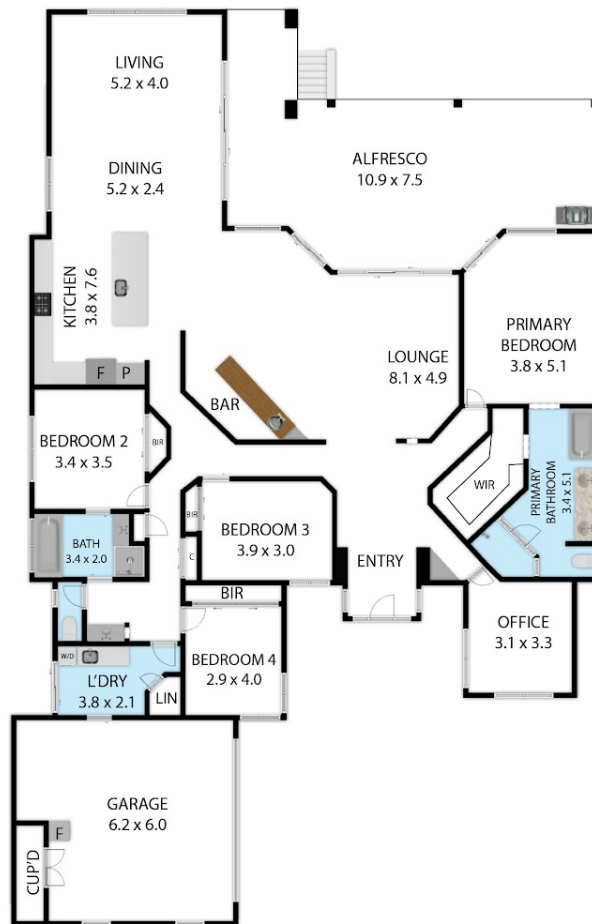


Ross Hincksman

0417687379

rossh@atrealty.com.au

www.atrealty.com.au



49 Protea Drive, Bongaree, QLD, 4507

TOTAL APPROX. FLOOR AREA 265 SQM

Whilst every attempt has been made to ensure the accuracy of the floor plan contained here, measurements of doors, windows, rooms and any other items are approximate and no responsibility is taken for any error, omission, or misstatement. This plan is for illustrative purposes only and should be used as such by any prospective purchaser.



Disclaimer: Please note this floor plan is for marketing purposes and is to be used as a guide only. All dimensions are estimates only and may not be exact measurements.