

SOLD

MODERN TERRACE HOME IN, RIPLEY

This stylish and contemporary terrace home at 23 Trevorrow Street, Ripley offers the perfect blend of low maintenance living and modern design. Ideal for first-home buyers, downsizers, or investors, this home features:

- 3 Bedrooms – Spacious rooms, including a master with ensuite.
 - 2 Bathrooms – Modern design with a main bathroom and ensuite to the master.
 - 1-Car Garage – Secure parking with extra storage.
 - Land Size: 230m² – Low-maintenance block, perfect for easy living.
 - Property Size: 111m² – Well-designed layout with an open-plan living area for effortless entertaining.
 - Built for Comfort – Contemporary finishes and fittings throughout, ensuring a comfortable and stylish home.
 - Why Ripley?
 - Growing Suburb – Ripley is one of the fastest-growing areas, with new developments and infrastructure bringing long-term value.
 - Convenient Location – Close to shopping, schools, and public transport.
 - Parks and Recreation – Enjoy nearby parks, walking paths, and green spaces for outdoor activities.
 - Affordable and Modern Living – A great option for those seeking a modern home in an affordable location.
- This terrace home offers a low-maintenance, modern lifestyle with everything you need close by. Don't miss out on this great opportunity—contact us today to arrange an inspection.

These photos were taken prior to tenants moving in.

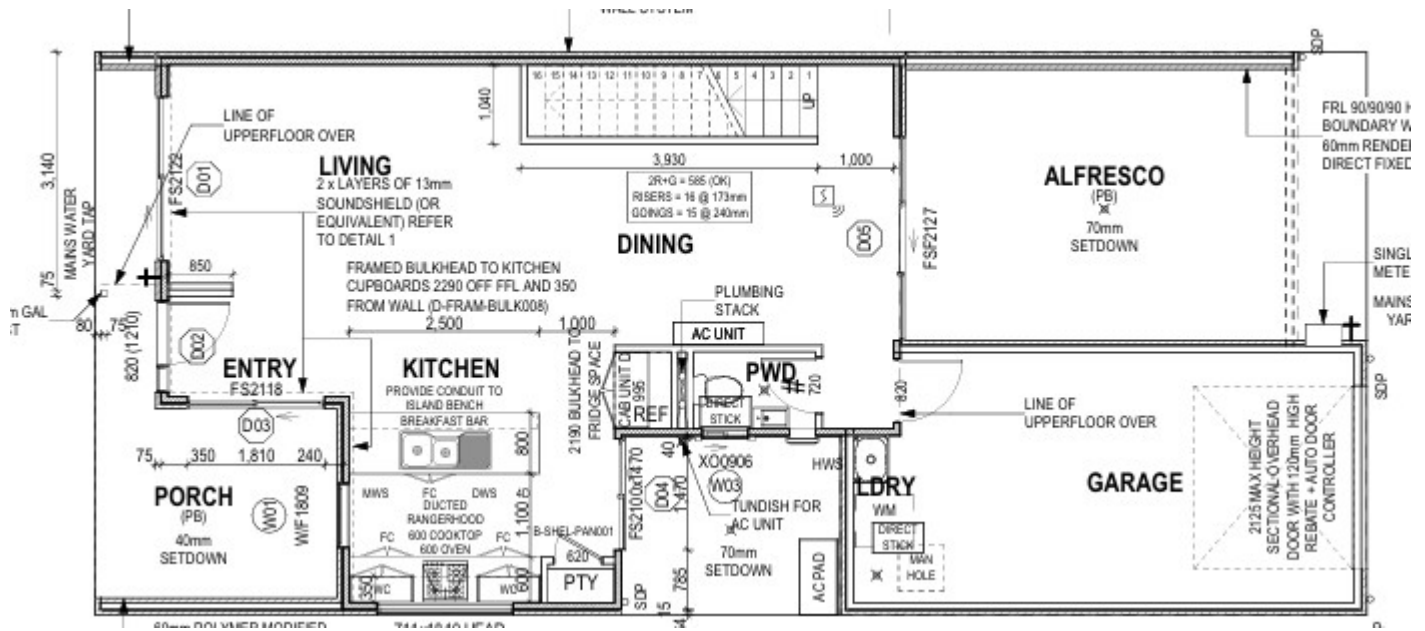
3 BED | 2 BATH | 1 CAR

PRICE:
\$610,000

OPEN FOR INSPECTION:
N/A



Michael Lo
0413836188
michaello@atrealty.com.au
www.atrealty.com.au



Disclaimer: Please note this floor plan is for marketing purposes and is to be used as a guide only. All dimensions are estimates only and may not be exact measurements.