



FOR SALE

CENTRALLY LOCATED 3 BEDROOM HOME LOW MAINTENANCE GROUNDS + SHED

**** PRICE REDUCED ****
REASONABLE OFFERS CONSIDERED

This well-built and centrally located 2-3 bedroom home offers the perfect combination of comfort, convenience, and practicality.

Situated on a low maintenance allotment of 779m2 (approx), the property features easy to care for grounds making it ideal for those with a busy lifestyle, perfect for downsizing without compromising on space, or as an investment property in a prime location!

8 Mudge Terrace is located close to amenities such as medical clinic, local school and kindy, child care centre, hospital, foreshore walking trail, shopping precinct, hotel, jetty and more, making it a prime choice for those who value accessibility.

The home comprises 3 bedrooms or 2 + study, (2 bedrooms with BIR storage and ceiling fans), open plan kitchen/dining, spacious lounge room with lovely natural light, rumpus room with a/c, large 3 bay shed providing plenty of room for vehicles and could also be used as a hobby space. The shed also has a mezzanine for additional storage and there is a carport on the western side of the house. The low maintenance grounds are perfect for those who want a neat garden without the hassle of upkeep.

With a practical layout and potential for further improvements, this home offers the best of both worlds with a low-maintenance lifestyle plus the space you need. Whether you're a first-time homebuyer, a downsizer, or someone looking for a well-located investment property, this property could be what you are waiting for.

Features include:
Fantastic central location
10,000L (approx) rainwater storage
3 x split system a/c
3 bedrooms (or 2 + study)
BIR & ceiling fans in bedroom 1 & 2

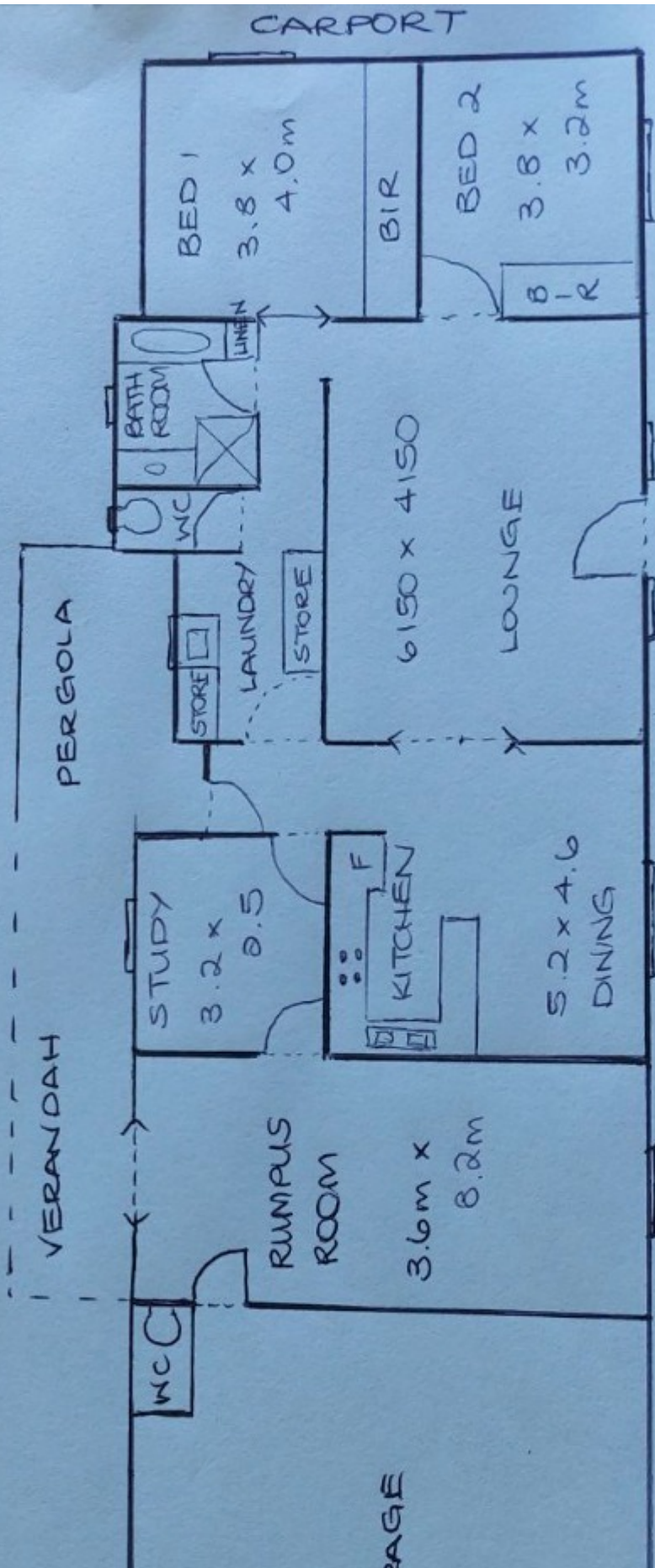
2 BED | 1 BATH | 2 CAR

PRICE:
REDUCED TO \$485,000

OPEN FOR INSPECTION:
N/A



Travis Barber
0421925005
travisbarber@atrealty.com.au
www.atrealty.com.au
RLA: 269823



Disclaimer: Please note this floor plan is for marketing purposes and is to be used as a guide only. All dimensions are estimates only and may not be exact measurements.

