



FOR SALE

NEW YEAR! NEW HOME.....

This charming property in Warragul offers the perfect blend of modern comfort and serene country living. The 3-bedroom, 2-bathroom home boasts a spacious master suite with an ensuite and walk-in wardrobe, while the children's rooms feature built-in wardrobes. The chef's kitchen is equipped with a 900mm cooker, dishwasher, and ample bench space, all connected to a meals area that can double as a third living space—ideal for enjoying picturesque views.

The large living area is perfect for family time, complete with a cozy wood fire and enough room for a home office. The rumpus room takes entertainment to the next level with its wood heater, built-in bar, and ample space for a large TV. Whether it is hosting guests or relaxing with family, this space is sure to be a favourite.

Outside, the deck offers an idyllic setting for morning coffees or BBQs, while the fully fenced yard ensures privacy and security, providing a safe haven for children to play. The 800m² block also features friendly cows as backyard neighbours, giving you a true country feel.

Additional features include:

Solar panels, New ducted heating, Split system air conditioning and heating, Putting green, Secure front and back yards

Situated in a highly sought-after area, this property is just a short drive to Warragul's town Center, schools, shops, and public transport, offering the best of both rural tranquillity and modern convenience.

This home is a true gem, perfect for those seeking a peaceful lifestyle without compromising on comfort or accessibility.

3 BED | 2 BATH | 0 CAR

PRICE:

Contact Agent

OPEN FOR INSPECTION:

N/A

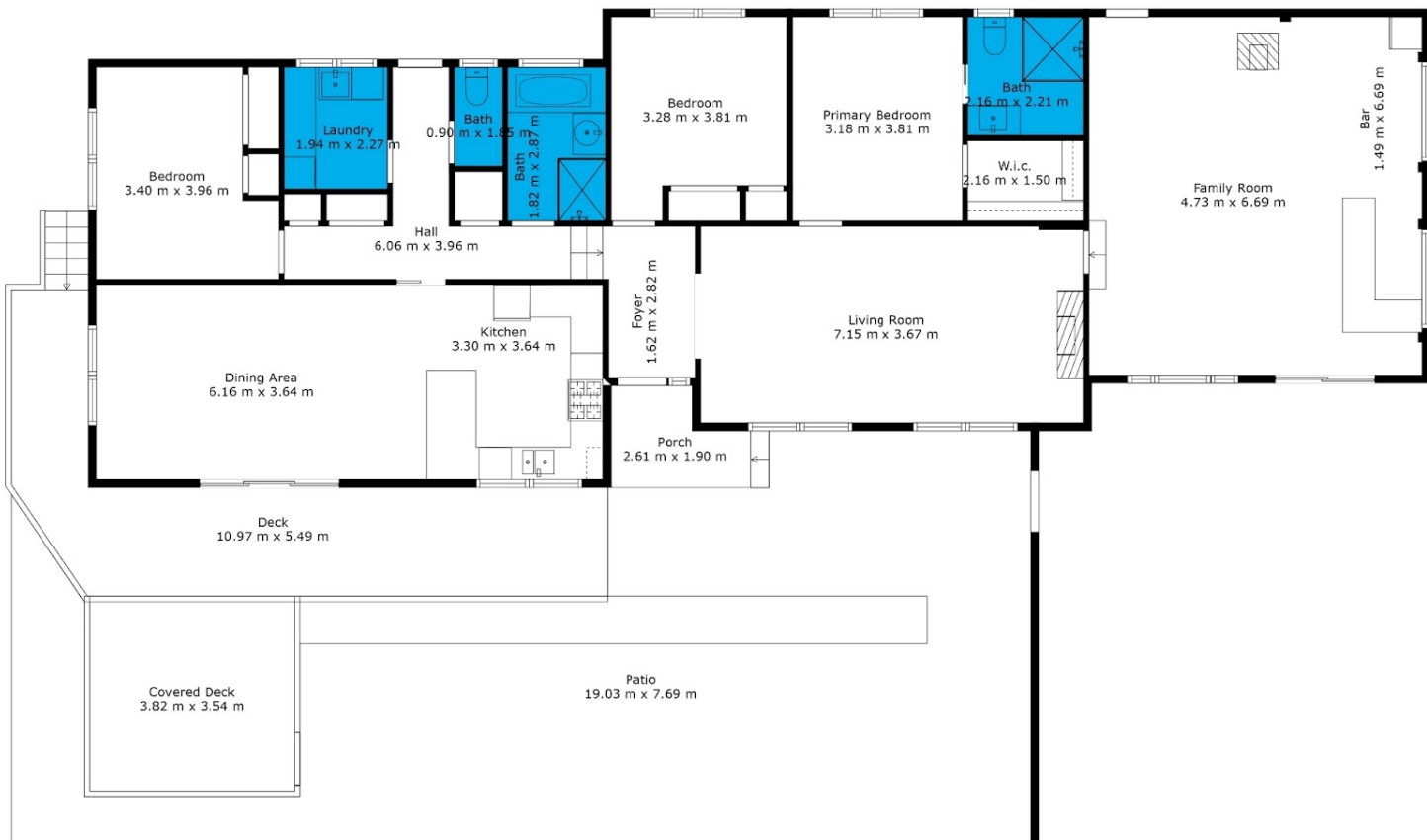


Mel Ahearn

0409183763

mahearn@atrealty.com.au

atrealtypropertysalesgippsland.com.au



TOTAL: 182 m²

FLOOR 1: 182 m²

EXCLUDED AREAS: DECK: 28 m², COVERED DECK: 14 m², PATIO: 84 m², PORCH: 4 m²

Floor Plan Created By Cubicasa App. Measurements Deemed Highly Reliable But Not Guaranteed.



Disclaimer: Please note this floor plan is for marketing purposes and is to be used as a guide only. All dimensions are estimates only and may not be exact measurements.