

FOR SALE

TIMELESS CAPE BEACH HOUSE

Prepare to seize an extraordinary opportunity with this timeless Cape beach house! This delightful hidden treasure has been cherished by the same family for over three decades and is situated in one of the most sought-after locations in Cape Paterson! Envision being merely moments away from the safe, tranquil, and patrolled bay and surf beaches, immersed in breathtaking leafy surroundings, and enjoying picturesque coastal walking trails, all while having the convenience of local shops and cafes just minutes from your doorstep!

For more detailed info on this property visit the dedicated property website www.2zephyr.com

Inside, this understated yet welcoming home brims with potential! Imagine elevating this space to capture the stunning, panoramic ocean views that only a fortunate few can enjoy in Cape Paterson. The beach house features a beautifully re-modeled modern kitchen, gleaming polished floorboards throughout, and two snug bedrooms, each equipped with built-in robes. The sunlit open-plan dining, living, and meals area fosters an ideal atmosphere for gatherings, while you'll cherish the peaceful outdoor entertaining space complete with a private patio and sunshade!

Set on a spacious 511 sqm plot, this coastal gem not only exudes charm but also presents an incredible opportunity for future development (STCA)! Whether you're aiming to enhance your personal sanctuary or make a wise investment, this beach house could be the ideal project to elevate your property portfolio! Don't let this fantastic opportunity slip away!

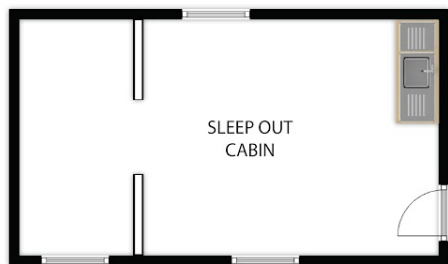
2 BED | 1 BATH | 2 CAR

PRICE:
\$695,000 - \$725,000

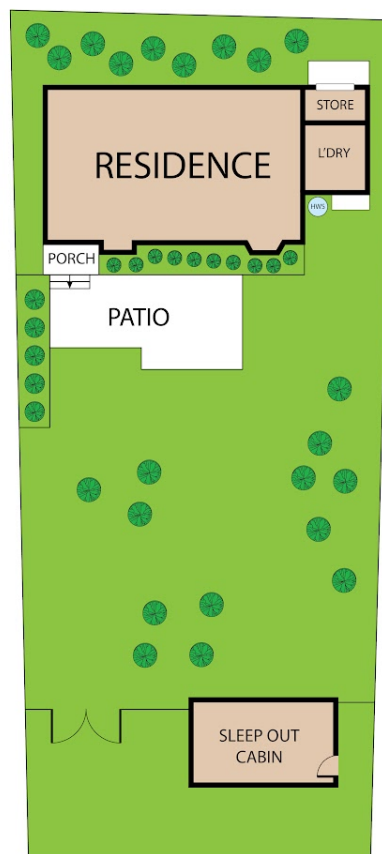
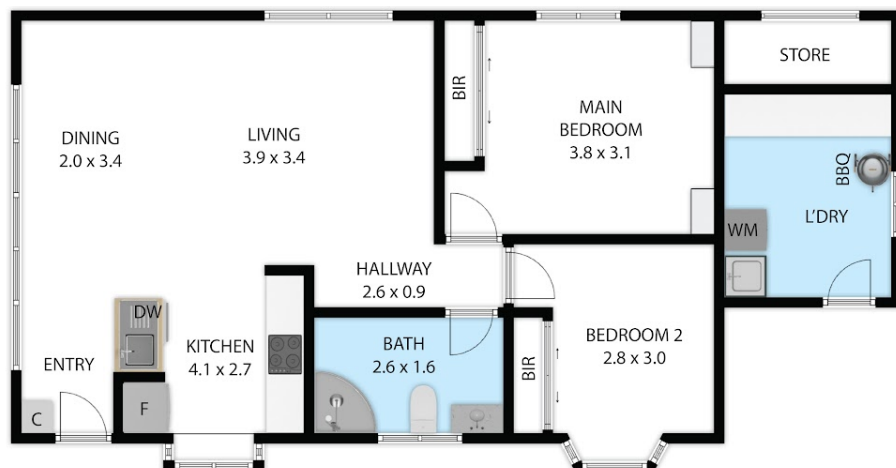
OPEN FOR INSPECTION:
N/A



Leo Edwards
0472523445
leo@atrealty.com.au
www.atrealty.com.au



NOT IN POSITION



2 Zephyr Court, Cape Paterson, VIC, 3995

TOTAL APPROX. FLOOR AREA 56 SQ.M

Whilst every attempt has been made to ensure the accuracy of the floor plan contained here, measurements of doors, windows, rooms and any other items are approximate and no responsibility is taken for any error, omission, or misstatement. This plan is for illustrative purposes only and should be used as such by any prospective purchaser.

INVERLOCH
VIC 3995

@realty

Disclaimer: Please note this floor plan is for marketing purposes and is to be used as a guide only. All dimensions are estimates only and may not be exact measurements.