



FOR SALE

SOLD. SPECTACULAR VIEWS OF THE BLUE MOUNTAINS

Local estate agent Treena Kahale is proud to present a rare but immaculate family home located in one of the most desirable streets in the Vermont. Set on a huge 1,550sqm of prime flat land with 3.5m at the side enabling access to the entire property.

This magnificent, well appointed residence stands proudly on the street and is within walking distance to the local primary school and day care centre, just a short drive to local high schools, and for the golfing and boating lover, just moments away from the famous and fabulous Lynwood Country Club and the Hawkesbury River.

A well designed floorplan separates sleeping quarters from living areas and the contemporary interiors flow seamlessly to the outdoor entertaining overlooking the sparkling salt water pool with stunning stack stone water feature beckoning a lifestyle of perpetual holidays and all while enjoying uninterrupted views of Sydney's Blue Mountains.

The master suite hides a generous walk through robe with luscious ensuite including a private WC and double shower, while the double-sized main bathroom boasts jack and jill vanities with a separate bath and shower and ensuite access through 2 bedrooms as well as the hall. This magnificent family home is luxury in its entirety.

- *Wide foyer entrance with 9 foot high ceilings and tall doors to match
- *Designer kitchen with full butler's pantry overlooking the pool and yard
- *Stainless steel appliances with 40mm Caesarstone and gas cooking
- *Huge study with storage and wired for sound
- *NBN, 3kw solar panels, alarm and ceiling fans throughout
- *Ducted air conditioning and natural gas heating
- *Sound proofed theatre room with elevated seating
- *Additional private lounge room for the kids or teenagers
- *Sparkling salt-water pool with stack stone water feature
- *Loft ladder converts the ceiling space into easy storage
- *Huge 3.5m full side access to drive through to the rear of the property

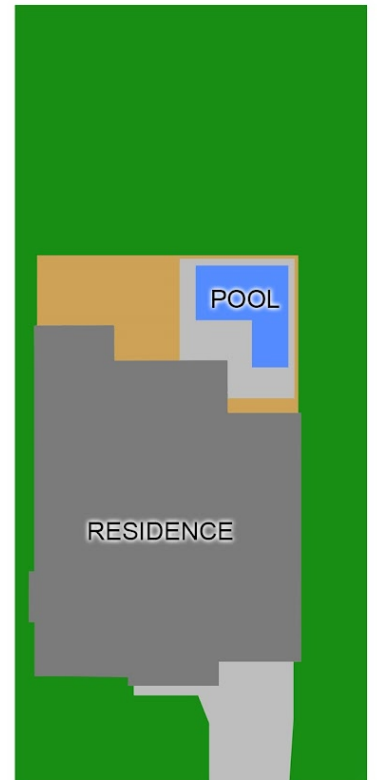
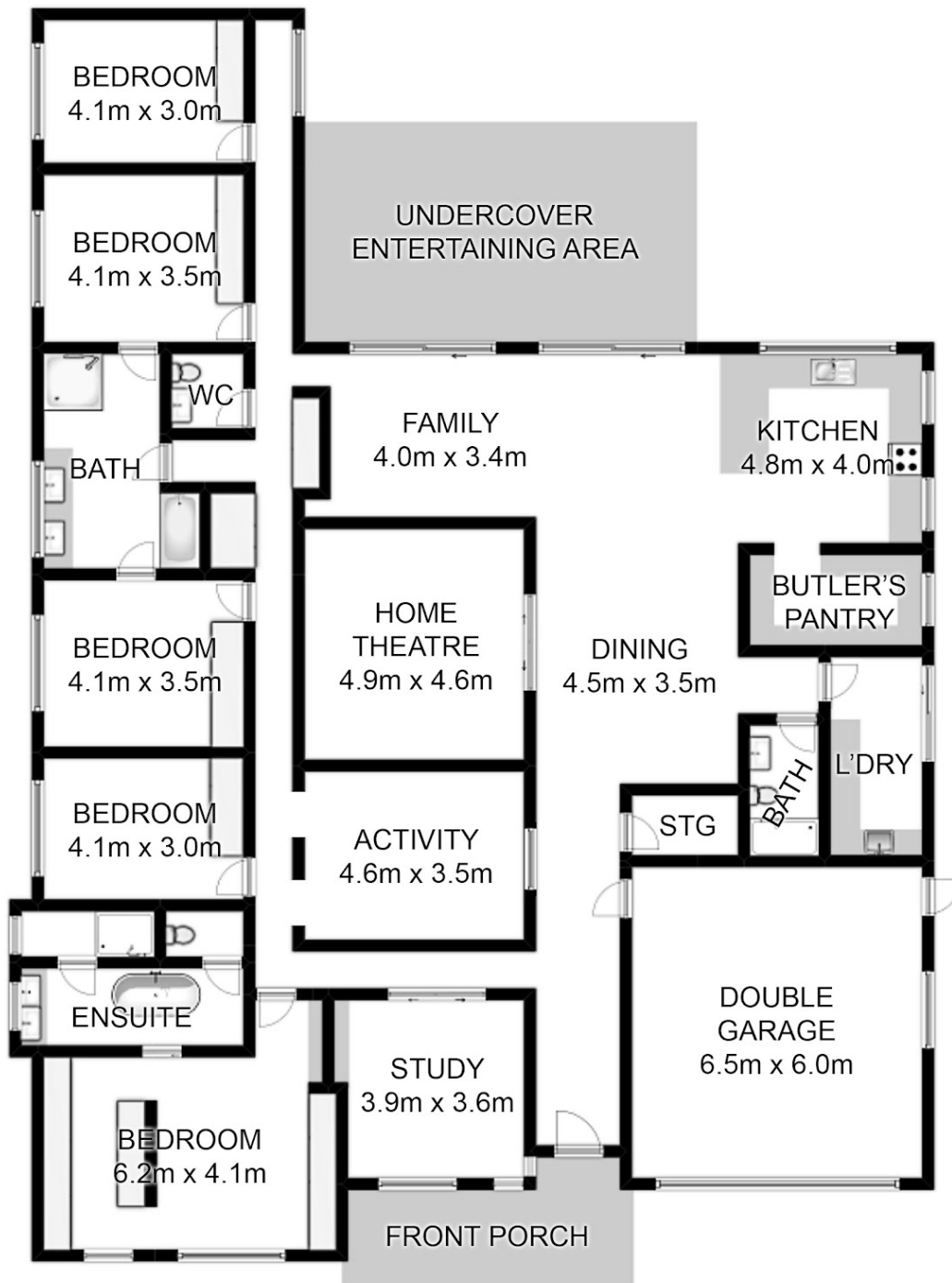
5 BED | 3 BATH | 0 CAR

PRICE:
Contact Agent

OPEN FOR INSPECTION:
N/A



Treena Kahale
treena@atrealty.com.au
www.atrealty.com.au



NOTE: Floor plan and site plan measurements are approximate and for illustrative purposes

Disclaimer: Please note this floor plan is for marketing purposes and is to be used as a guide only. All dimensions are estimates only and may not be exact measurements.