

# FOR SALE

## WELL PRESENTED 4 BEDROOM HOME ON LARGE BLOCK

This is a nicely presented property with Modern Kitchen with meals area  
 Spacious living area with split System air-conditioning  
 4 Good size bedrooms off Lounge and hallway  
 Bathroom has bath and there is a separate toilet at end of hallway  
 Large Laundry with rear access to a generous rear yard with Rain Water Tank  
 Fully fenced with metal fencing around the entire property

Currently rented for \$230.00 per week

### ABOUT COOBER PEDY

Coober Pedy is in Central South Australia approximately 550 Kilometres north of Port Augusta. Originally Started as an OPAL Mining Town but has grown into a vibrant community with all the facilities of a town many times its size

Those services including:

IGA Super Market

Home Hardware store (Part of Mitre 10 Group)

Hospital and Aged Care Facilities

Police, Fire Brigade and Ambulance Services

School (reception to year 12) and TAFE College and Childcare

Post Office, Chemist

Regular Transport Services (minimum twice a week) by McArdle Freight

South Australia's only DRIVE IN THEATRE

Churches of Many Denominations

Airport and Bus Services (Greyhound service runs most days)

Services Stations x 4

Food Outlets including – Restaurants / Takeaway / Casual Dining / Cafes

Shops – Clothing / OPAL /

Government Offices include – Centrecare / Housing SA / Support Services / Council / Aboriginal

Health and Aged care / Library

Welfare Support including Catholic Centre care and Vinnies Op shops

Swimming Pool

Hotels, Motels (Both above ground and Underground) and Caravan Parks

Basketball and Tennis courts (new)

4 BED | 1 BATH | 0 CAR

### PRICE:

OFFERS OVER \$110,000.00

### OPEN FOR INSPECTION:

N/A



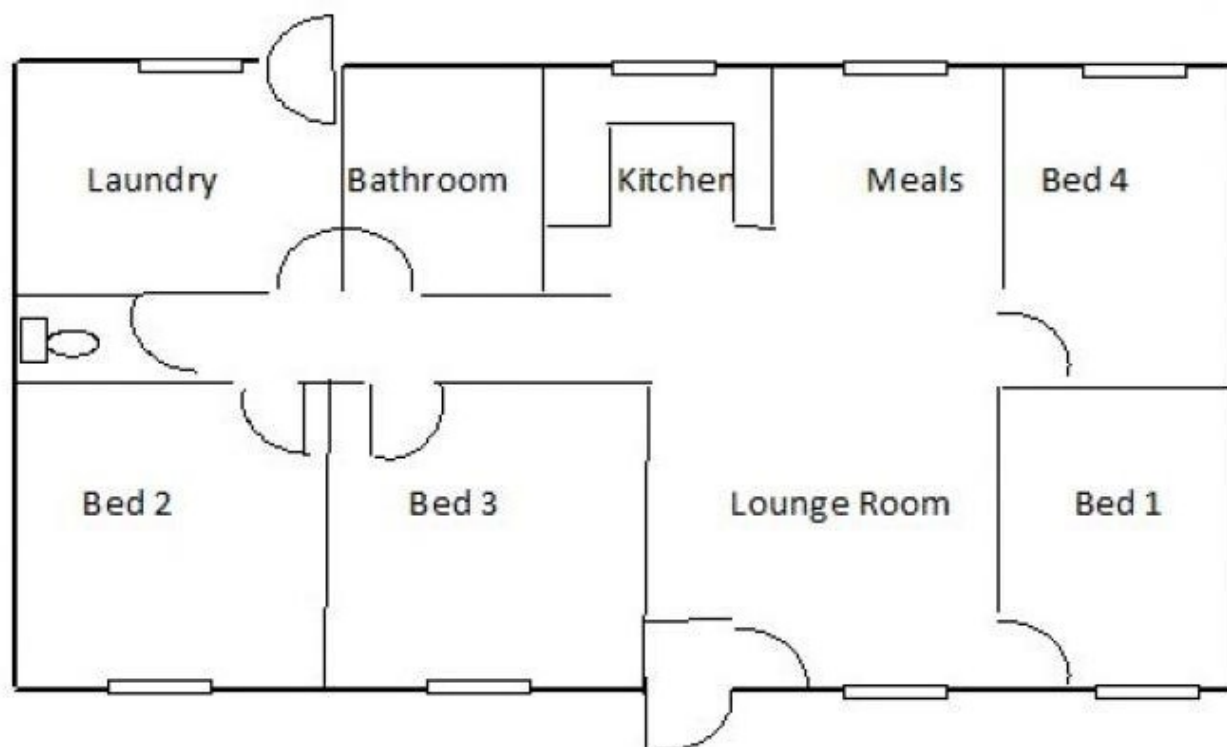
**Trevor Lambert**

**0412396306**

trevor@atrealty.com.au

[www.atrealty.com.au](http://www.atrealty.com.au)

RLA: 269823



Disclaimer: Please note this floor plan is for marketing purposes and is to be used as a guide only. All dimensions are estimates only and may not be exact measurements.