



# FOR SALE

## BEACHFRONT APARTMENT - UNMATCHED WATER VIEWS "JUST STEPS FROM THE BEACH"

Perfect for Holiday Stays!!!

This is the best opportunity for an entry level priced – beach lifestyle or investment, for family holidays and or excellent returns from short stay accommodation. A rare opportunity to buy in a tightly held strip of Banksia Beach.

Unmatched 180 degrees views of Pumicestone Passage from your balcony, with amazing water views from your Living, Dining rooms and from all 3 bedrooms. Whether it's a morning coffee or a cocktail for watching the nightly sunset over the Passage and the Glasshouse Mountains you will love the location of this unit.

Add all this with the convenience of; under 500 metres to my local shopping centre (Woolworths, quality butcher and seafood, fruit market, takeaways & more). 800 metres to Solander Bowls Club, 4 min drive to Pacific Harbour Golf Club and under 10 mins to the Bribie Island or Sandstone Point Hotels. Include less than 1 hour drives to either Brisbane airport or the Sunshine Coast.

This amazing apartment could be yours!!

### Holiday Features

- Stunning water views with amazing sunsets
- A few steps to:
  - o Pristine beaches
  - o Shady parkland
  - o Walking paths
  - o Shelters, BBQ's, picnic areas, swimming, fishing and boating.

### Outstanding Features

- Large Main and 2nd bedroom with access to balcony
- All with built-in robes, walk-in for the Main
- Spa bath in ensuite
- Front and rear access allows for good crossflow breezes
- Fans in living room and all 3 bedrooms
- Water views from 2 bedrooms, living and dining rooms,

3 BED | 2 BATH | 1 CAR

### PRICE:

Reduced to Sell!!! \$760,000 plus

### OPEN FOR INSPECTION:

N/A

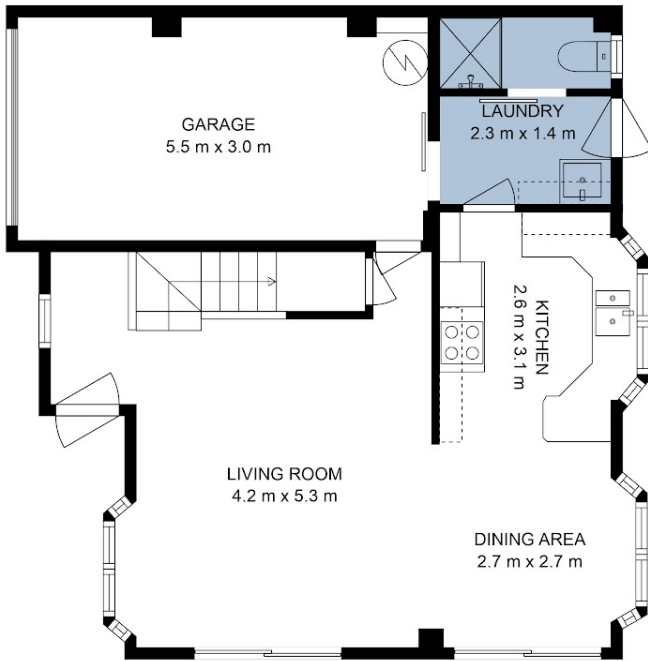


**Elena Stevens**

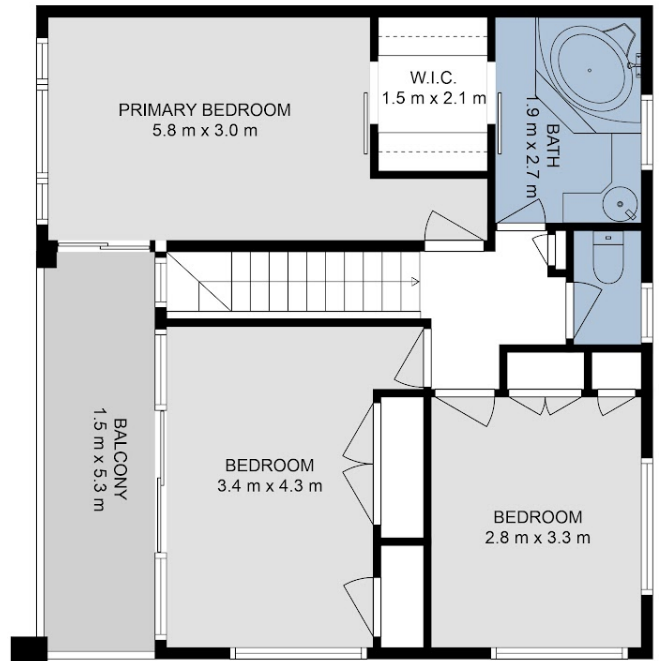
**0415230521**

[elena.stevens@atrealty.com.au](mailto:elena.stevens@atrealty.com.au)

[www.atrealty.com.au](http://www.atrealty.com.au)



FLOOR 1



FLOOR 2

This floor plan is intended to give a general indication of the layout only. Sizes & dimensions are approximate, actual may vary.



Disclaimer: Please note this floor plan is for marketing purposes and is to be used as a guide only. All dimensions are estimates only and may not be exact measurements.