



SOLD

NORTH TO WATER FACING, CONTEMPORARY COASTAL QUEENSLAND BEACH HOME WITH MOORING ON 1100M2

Auction On Site - Wednesday 18 February 4pm if not sold prior.

Welcome to 12 Quayline Close, Pelican Waters. Perfectly positioned, this north facing, private, modern home with mooring, is the epitome of luxury and elegance, offering you and your family the perfect combination of indoor and outdoor living. With 4 spacious bedrooms, 5th bedroom or large office, 3 well-appointed bathrooms, a powder room, including a triple garage and boat shed/tinker workshop, this thoughtfully designed home has everything you could ever want or need.

Each of the 4 bedrooms feature built-in wardrobes, providing ample storage space. As you make your way upstairs, you will be blown away by the spaciousness and natural light, both upstairs bedrooms boast luxurious ensuites and the master suite has a private balcony to enjoy your morning coffee or afternoon sun downer. With ducted heating and cooling throughout the home, you can enjoy year-round comfort no matter the weather outside.

But the true highlight is this highly sought after premium 1100 square meter north facing waterfront property, boasting year round living, outdoor features. Step outside onto the expansive balcony and take in the breathtaking views of your private pontoon, on the canal overlooking parkland. The large fully fenced front yard is perfect for kids and pets to play safely, and the rear deck and outdoor entertainment area make it the ideal space for hosting BBQs and gatherings with friends and family. And on those hot summer days, you can cool off in the sparkling in-ground salt water swimming pool or relax in the outdoor spa.

This property offers you the perfect balance on indoor and outdoor living.

4 BED | 3 BATH | 3 CAR

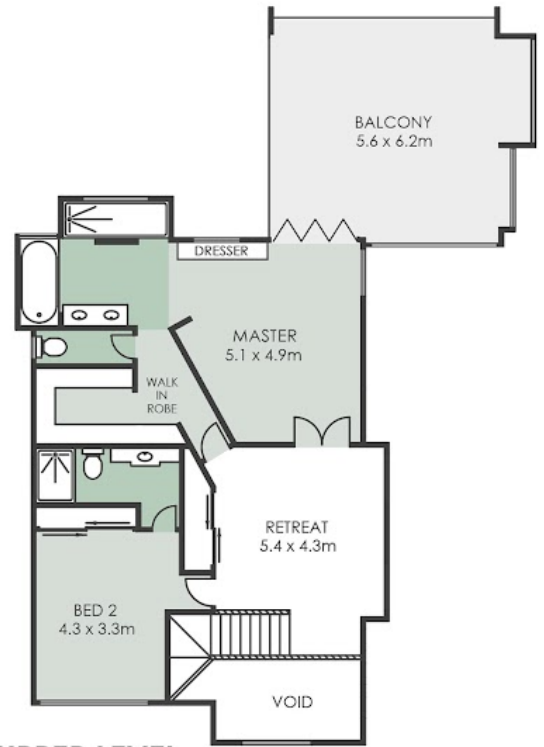
PRICE:
\$3,000,000

OPEN FOR INSPECTION:
N/A



Nikki Balish
0421226959
nikkibalish@atrealty.com.au
www.atrealty.com.au

12 Quayline Close, PELICAN WATERS



Disclaimer: Please note this floor plan is for marketing purposes and is to be used as a guide only. All dimensions are estimates only and may not be exact measurements.



