



## FOR SALE

**BRAND NEW (PARRAMATTA LOCATION) 2 BED , STUNNING INTERIORS, BREATHTAKING 21ST LEVEL VIEWS, WALK TO STATION AND WESTFIELD!, CALL TO INSPECT 7 DAYS!**

This wonderful home is actually situated in PARRAMATTA

Strata is \$1242 per qtr

The apartment is 82 sqm plus 13 sqm car space plus 4 sqm storage room, total 99 sqm

Perched high on Level 21, this exquisite BRAND NEW two-bedroom, two-bathroom luxury apartment redefines urban living with breathtaking city and leafy district views. Perfectly positioned just 600m from Parramatta Westfield, a mere 6-minute walk to Parramatta Station, and within strolling distance to an array of cafes, restaurants, and shops, this is the ideal home for busy couples or young families seeking sophisticated, easy-care living.

The gourmet kitchen boasts high-end appliances, stone benchtops, a stylish glass splashback, and gold tapware, blending elegance with functionality. A pantry and Euro laundry add thoughtful convenience.

The open-plan living and dining area features floor-to-ceiling windows, leading to an entertainer's balcony, the perfect spot to soak in the sunrise or twinkling city lights. Two spacious bedrooms are appointed with plush carpets and built-in robes; the master enjoys its own ensuite, while the central bathroom offers a separate bath and shower.

Residents enjoy exclusive access to a podium-level pool, manicured gardens, and a rooftop communal space with a community room, BBQ facilities, and sweeping views.

**2 BED | 2 BATH | 1 CAR**

**PRICE:**

**\$830,000 - \$860,000**

**OPEN FOR INSPECTION:**

**N/A**

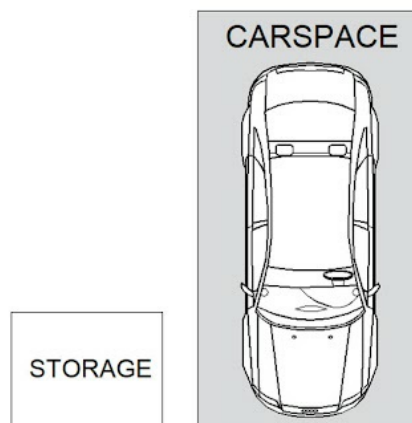


**Vivek Uppal**

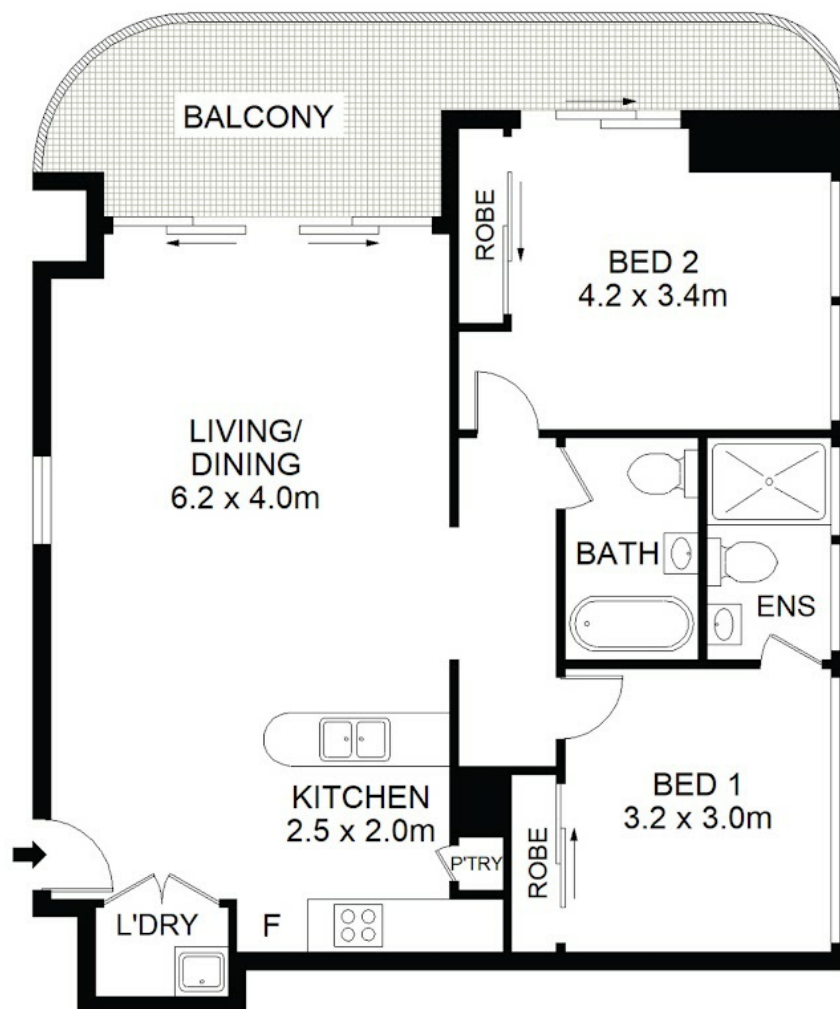
**0426425839**

[vivekuppall@atrealty.com.au](mailto:vivekuppall@atrealty.com.au)

[www.atrealty.com.au](http://www.atrealty.com.au)



## BASEMENT



## LEVEL 21



Disclaimer: Please note this floor plan is for marketing purposes and is to be used as a guide only. All dimensions are estimates only and may not be exact measurements.

2109/14-20 Parkes Street Harris Park

VIVEK UPPAL @realty

DISCLAIMER: DIMENSIONS ARE APPROXIMATE AND SHOULD ONLY BE USED AS A GUIDE. THEY ARE NOT TO SCALE AND NO LIABILITY BE ACCEPTED.

vivekuppal@arealty.com.au

[www.atrealty.com.au](http://www.atrealty.com.au)