



FOR SALE

STUNNING FAMILY HOME WITH DUAL OCCUPANCY POTENTIAL

This stunning 5-bedroom, 2-story home is ready for you to move in or rent out right away! It features beautiful views of the leafy mountains and has a special setup that's great for big families or those who need extra living space. It's a perfect option for anyone looking for comfort and convenience! Upon entering you are welcomed by fresh engineered-timber flooring and a bright, open-plan living, dining and kitchen area, complete with ceiling fans and air conditioning. The kitchen features a unique handmade wooden architectural design, highlighted by custom timber benchtops incorporating a flat-top electric stove and oven and a free-standing island bench. A large servery window and glass sliding door opens up to an oversized balcony, allowing you to soak in the leafy surroundings and stunning mountain views. Entertaining is breeze!

Upstairs you have 3 spacious bedrooms as well as a beautiful main bathroom with a separate toilet. The downstairs area serves as a fully self-contained 2 bedroom unit, ideal for the extended family or rent out for extra income. This level includes a main bedroom with a walk-in robe and private balcony, 2nd bedroom with built-in robes and air conditioning, 2nd bathroom, laundry, open plan living room and direct access to the backyard, where you can enjoy two flat, freshly laid grassed areas for the kids or pets. You also have a private front yard and a detached double car garage with a rear access door for added convenience.

If you are searching for a spacious, versatile family home with stunning views in the highly sought-after Figtree area, look no further than 78 Murray Park Road! Phone Peter Bullman today for more information

5 BED | 2 BATH | 2 CAR

PRICE:
Offers Invited

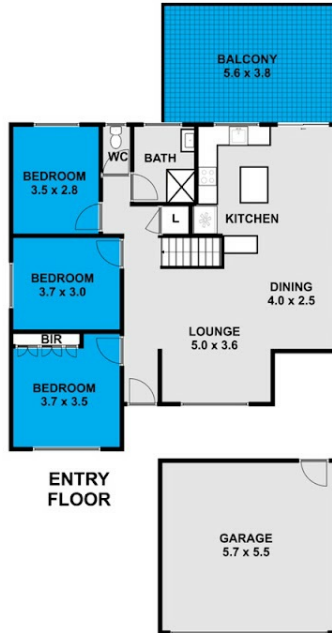
OPEN FOR INSPECTION:
N/A



Peter Bullman
0401394394
peterb@atrealty.com.au
www.atrealty.com.au



Bullman
Real Estate
@realty



This floor plan including furniture, fixture measurements and dimensions are approximate and for illustrative purposes only.
@Realty gives no guarantee, warranty or representation as to the accuracy and layout.
All enquiries must be directed to the agent, vendor or party representing this floor plan.

78 Murray Park Road Figtree

Disclaimer: Please note this floor plan is for marketing purposes and is to be used as a guide only. All dimensions are estimates only and may not be exact measurements.