



# FOR SALE

## BRIBIE ISLAND WATERFRONT LIVING AT IT'S FINEST - ALL SERIOUS OFFERS CONSIDERED

A superb home situated in one of the most desirable prestigious locations of Banksia Beach, where all homes in the street are on a canal. Four generous bedrooms and spacious open plan indoor and outdoor living areas make this a must see for all people looking to buy a home on a canal. This home is where you can enjoy the stunning sunsets, magnificent outdoor entertaining area, plunge pool with heated spa and your own private pontoon. The waterfront location and proximity to the shops and recreation activities Bribie Island offers makes this a must to inspect. Another quality build by Mancorp Homes.

Features of the home include:

- \* waterfront living in quality neighborhood.
- \* four bedrooms with built-in-robies and air conditioners
- \* master bedroom has ensuite and walk-in-robe
- \* modern kitchen with walk-in-pantry
- \* stone bench tops (large)
- \* 900mm gas cooktop and oven
- \* spacious open plan living area
- \* deluxe outdoor living area with remote controlled retractable blinds
- \* heated plunge pool with spa
- \* private pontoon with power and water attached
- \* airconditioned
- \* ceiling fans
- \* side access for trailer
- \* close and easy access to schools, shops and recreation activities
- \* solar panels with 5kw inverter

4 BED | 2 BATH | 2 CAR

PRICE:

offers above \$1,695,000

OPEN FOR INSPECTION:

N/A

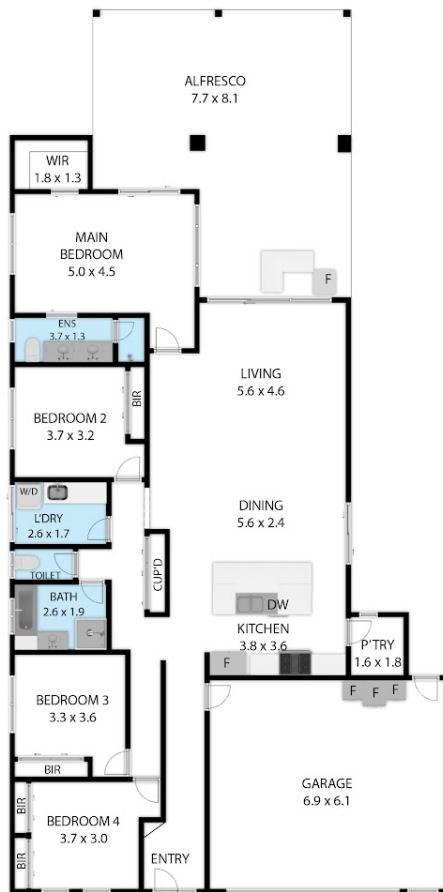


**Ross Hincksman**

**0417687379**

rossh@atrealty.com.au

[www.atrealty.com.au](http://www.atrealty.com.au)



25 The Peninsula, Banksia Beach, QLD, 4507  
TOTAL APPROX. FLOOR AREA 207 SQ.M

Whilst every attempt has been made to ensure the accuracy of the floor plan contained here, measurements of doors, windows, rooms and any other items are approximate and no responsibility is taken for any error, omission, or misstatement. This plan is for illustrative purposes only and should be used as such by any prospective purchaser.



Disclaimer: Please note this floor plan is for marketing purposes and is to be used as a guide only. All dimensions are estimates only and may not be exact measurements.