



FOR SALE

LOVELY FAMILY HOME IN A GREAT LOCATION

Welcome to 31 Carpenter Way. This lovely Family home was designed by the owner and built with Hotondo Homes in 2000. Fantastic 250 sqm home, designed with a large family in mind, set on an 858sqm block and only a short stroll to a private sandy beach or simply cross the bridge to everything Bribie Island has to offer. Consisting of 4 large Bedrooms, the master is a private retreat with a very large walk in robe and separate ensuite including a spa bath. Separate laundry and 5 different storage cupboards spread throughout the home. The Kitchen is centrally located overlooking the Family room which leads directly to the outdoor living area. The second access point leads to the formal dining and second living area behind the kitchen.

The large double garage is drive through with parking for your boat or caravan. Contains a small workshop area and storage space. Private entry to the home through the garage via a locked door.

Built in 2000 the home was a part time home to one person for 22 years and fulltime to that same person for 3 years. Consequently it is like new in every aspect.

- 4 Bedrooms
- Ensuite plus Second Bathroom
- 3 Living areas
- Dishwasher
- Security screens and doors
- All windows are key locked
- Zoned Security system
- Air-conditioning and Ceiling Fan
- Double Garage with rear door for drive through 3rd parking.
- Landscaped Gardens
- Cypress Pine Frame
- NBN Fibre to the house
- Bus Stop 2 doors down

Call Pat today and arrange an inspection of your new home.

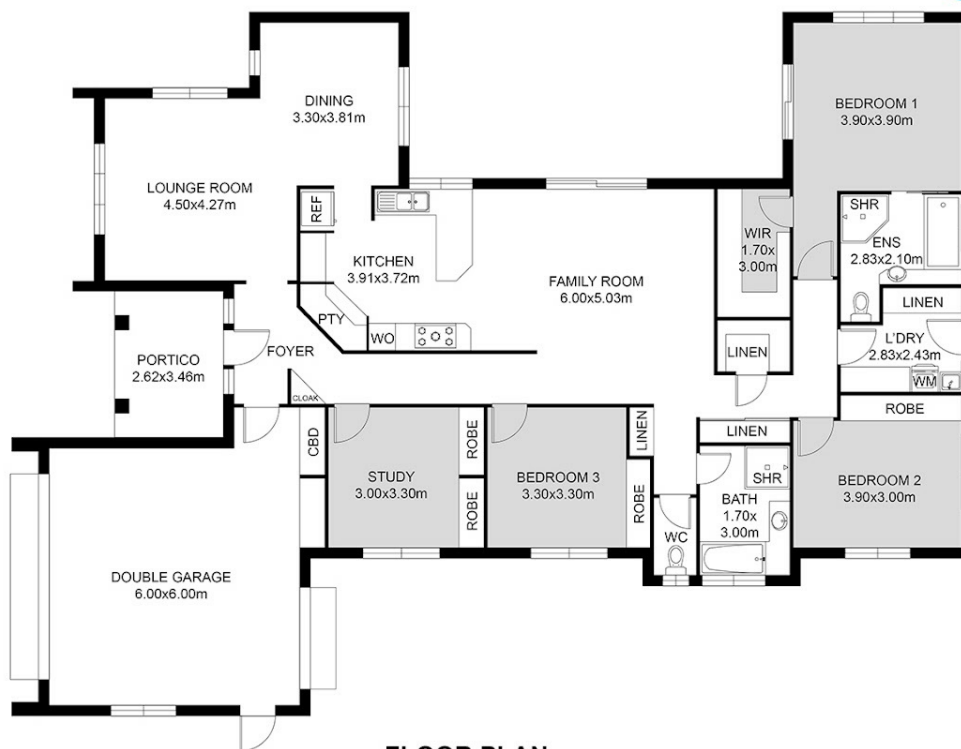
4 BED | 2 BATH | 3 CAR

PRICE:
OFFERS OVER \$899,000

OPEN FOR INSPECTION:
N/A



Pat Arnold
0419712269
parnold@atrealty.com.au
www.atrealty.com.au



FLOOR PLAN

This floor plan including furniture, fixture measurements and dimensions are approximate and for illustrative purposes only.
@Realty gives no guarantee, warranty or representation as to the accuracy and layout.
All enquiries must be directed to the agent, vendor or party representing this floor plan.

Floor area:
Residence 241.66 m²
Portico 9.06 m²
Total Floor Area 250.72 m²

31 CARPENTER WAY - SANDSTONE POINT

Disclaimer: Please note this floor plan is for marketing purposes and is to be used as a guide only. All dimensions are estimates only and may not be exact measurements.