

**SOLD**

## STUNNING LUXURY HOME WITH MODERN FEATURES & STAMP DUTY SAVINGS OPPORTUNITY!

This exquisite home, located on a spacious 448 sqm block, offers the perfect blend of modern design, comfort, and functionality. With a generous floor plan of approximately 29 squares, this property is ready to elevate your living experience.

As you step inside, you're greeted by high-end finishes, including 40mm stone benchtops throughout the home, creating a sleek and sophisticated aesthetic. The hybrid floors enhance the contemporary style, while the reverse cycle unit ensures year-round comfort, providing both heating and cooling throughout the home.

The heart of the home features a fully upgraded 900mm appliances in the Kitchen and Butler's Pantry equipped with a 600mm cooktop and rangehood, perfect for those who love to entertain. A dishwasher adds convenience to your culinary space, while the waterfall ends on the island benchtop provide an added touch of luxury.

Enjoy the privacy and comfort of double ensuites in the house, ideal for large families or guests. The home also boasts a modern façade, feature walls, and fully landscaped front and back yards, creating an inviting atmosphere both inside and out.

Security is a top priority with an alarm system and video intercom, giving you peace of mind. The aggregate driveway adds a stylish touch to the exterior, while the home's sleek design and well-maintained features promise a lifestyle of comfort and ease.

### KEY FEATURE:

- \* Modern & Elegant Façade that adds to street appeal
- \* Double Ensuite with walk-in robes for bigger family
- \* High-quality 900mm stainless steel appliances
- \* Butler's pantry with 600mm appliances
- \* 40mm stone benchtop throughout the house
- \* Soft-close drawers in the kitchen for ease of use

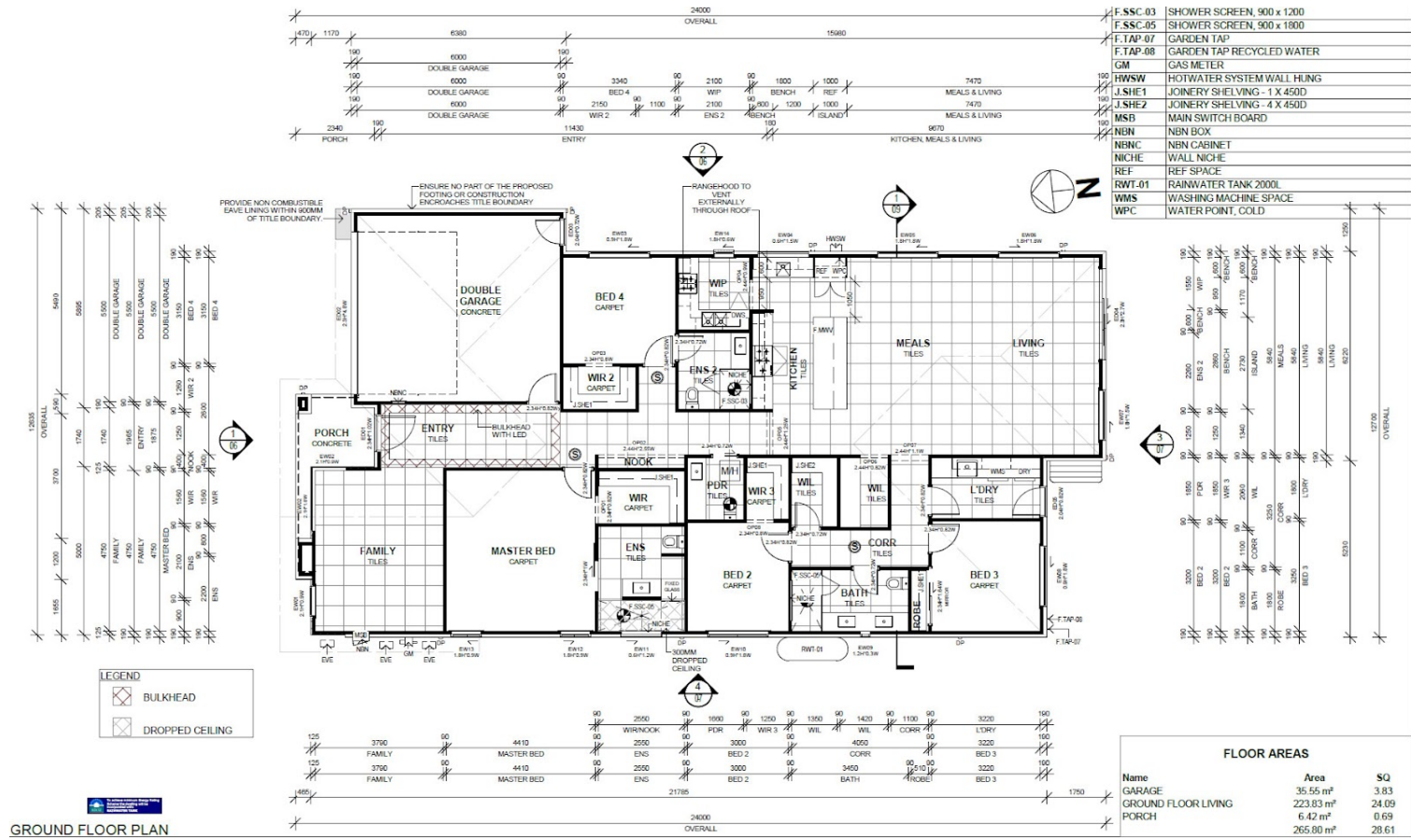
4 BED | 3 BATH | 2 CAR

PRICE:  
\$822,000

OPEN FOR INSPECTION:  
N/A



**Harmanpreet Singh**  
**0430000018**  
harmans@atrealty.com.au  
[www.atrealty.com.au](http://www.atrealty.com.au)



GROUND FLOOR PLAN

Disclaimer: Please note this floor plan is for marketing purposes and is to be used as a guide only. All dimensions are estimates only and may not be exact measurements.