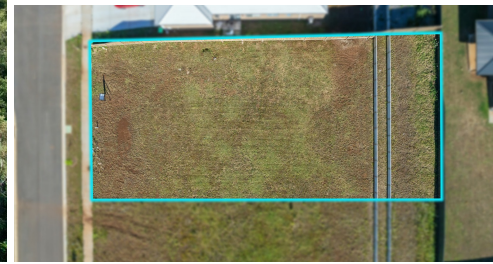
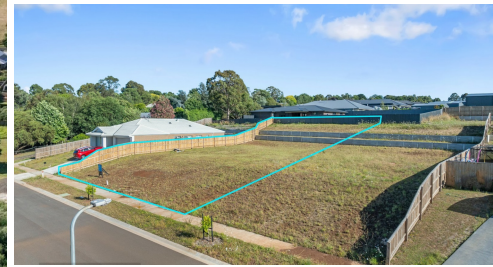


8 ROLFE CLOSE, LEONGATHA, VIC, 3953



FOR SALE

PEACE AND QUIET HERE.

Tucked away in a peaceful location, overlooking nature reserve and rolling hills, this 884m² block is looking for its next owner. There's huge scope here to design a truly special home to take advantage of the semi-rural setting and elevated views from the land, with some of the hard work already done in terms of the landscaping.

The block is situated within a short walk to the school precincts and the boardwalk through the reserve, making it the ideal place for young families to establish themselves and see out their schooling days from Primary to Secondary School and beyond.

All services available and titled ready to go.

0 BED | 0 BATH | 0 CAR

PRICE:
\$295,000

OPEN FOR INSPECTION:
N/A



Christie Nelson
0407812904
christienelson@atrealty.com.au
Christie Nelson Real Estate