



Sold

INVITING LOW SET HOME FLANKED BY ESTABLISHED LOW MAINTENANCE GARDENS

4 BED | 2 BATH | 2 CAR

10 Ruby Crescent, Meridan Plains, QLD, 4551

Immaculately presented low set spacious masterpiece ready to move in. Just add your furniture to make it yours. Cool refreshing internal vibes with cappuccino tones give the home timeless appeal.

Step inside and you'll be amazed with:

Features:

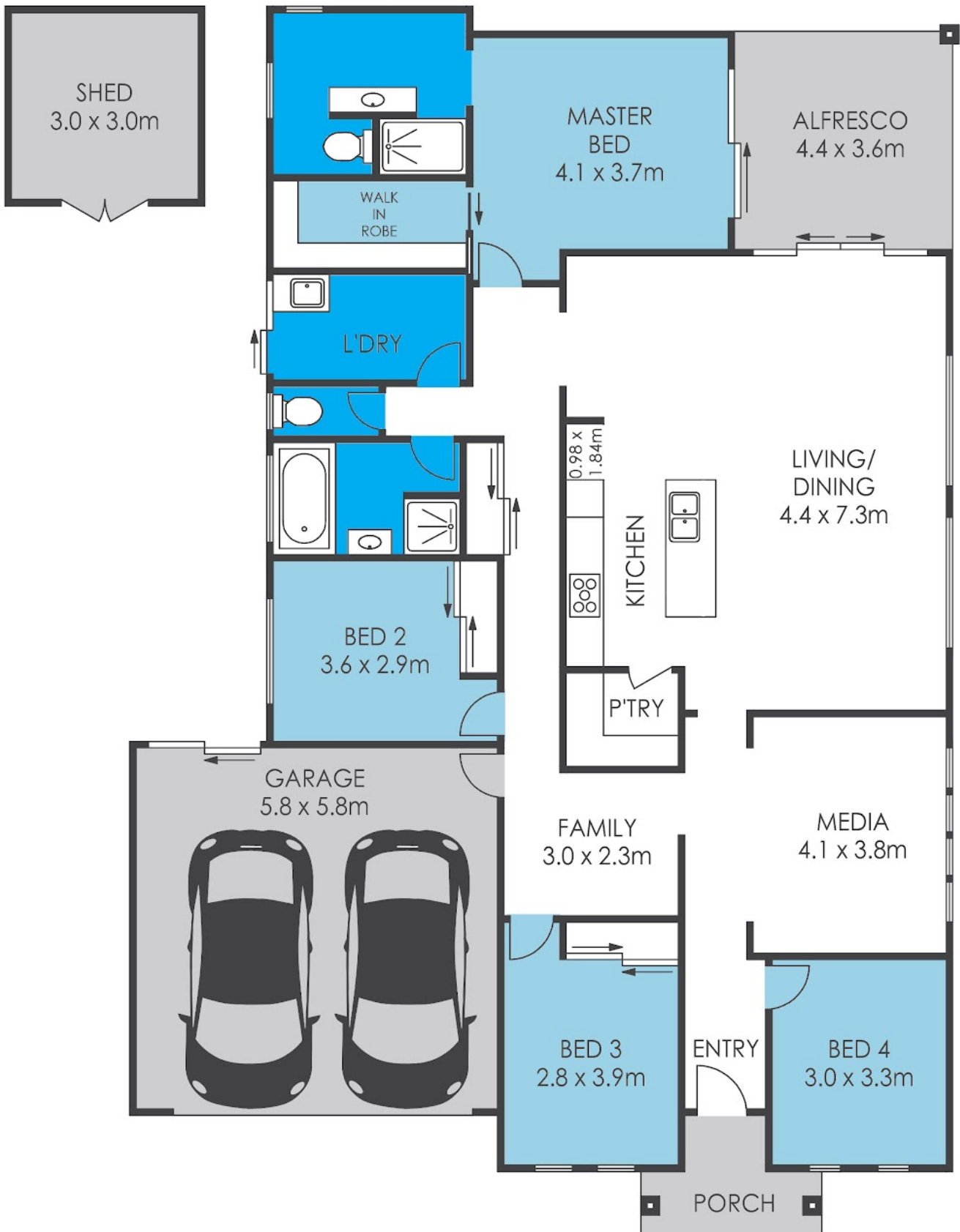
- *4 bedrooms – spacious, all with ducted air-conditioning
- *Walk-in robe in the master; mirrored robes in bedrooms 2, 3 and 4
- *Quality plantation shutters to filter the sunlight throughout the home
- *Covered rear patio off the master, ideal for al fresco dining
- *2 bathrooms – en-suite master bedroom with bathtub and shower in the main bathroom
- *Quality carpets throughout
- *Double lock up garage
- *Ceiling fans and air conditioning to keep you cool this summer
- *Electrical and gas European appliances including Miele dishwasher in the well-presented, functional kitchen with generous benchtops and storage

PRICE:
\$1,000,000

OPEN FOR INSPECTION:
N/A



Greg Pratt
0413 624 308
greg@coastaledgerealestate.com.au



10 Ruby Crescent, MERIDAN PLAINS

