

FOR SALE

ESCAPE TO YOUR OWN PIECE OF PARADISE IN OTATARA!!

Welcome to your own private paradise in Otatara, Southland, New Zealand! This stunning property has everything you could ever dream of and more. From the moment you step foot on the 5399 square meters of land, you will be transported to a world of tranquility and luxury.

As you enter the property, you will be greeted by a beautiful garden and a charming deck, perfect for enjoying your morning coffee or hosting gatherings with friends and family. The spacious outdoor entertainment area is an entertainer's dream, with ample room for BBQs, outdoor dining, and relaxation. And with the large garage, you can easily store all your vehicles and outdoor equipment without any hassle.

But the true beauty of this property lies within its walls. Boasting 3 bedrooms and 1 bathroom, this home is perfect for families of any size. The master bedroom comes with its own ensuite, providing you with the ultimate retreat after a long day. The other bedrooms are spacious and bright, with built-in wardrobes for all your storage needs.

There's an office for those who work from home. And if you're someone who loves to tinker or work with your hands, the built-in workshop is a dream come true. You can finally have a space to pursue your hobbies and projects without any interruptions as there is a hobby room for you as well.

But that's not all - there's ample storage space throughout. The home is heated with a heat pump plus an HRV System for added comfort.

This property is truly a lifestyle dream come true. Imagine waking up every morning to the sound of birds chirping and the fresh, crisp air of Otatara. You can spend your weekends exploring the surrounding nature, or simply lounging on your deck, taking in the beautiful views.

Don't miss out on this opportunity to make this property your own. So, what are you waiting for? Contact us now to schedule a viewing and make your dream of living in paradise a reality.

3 BED | 2 BATH | 2 CAR

PRICE:

Enquiries Over \$669,000

OPEN FOR INSPECTION:

N/A

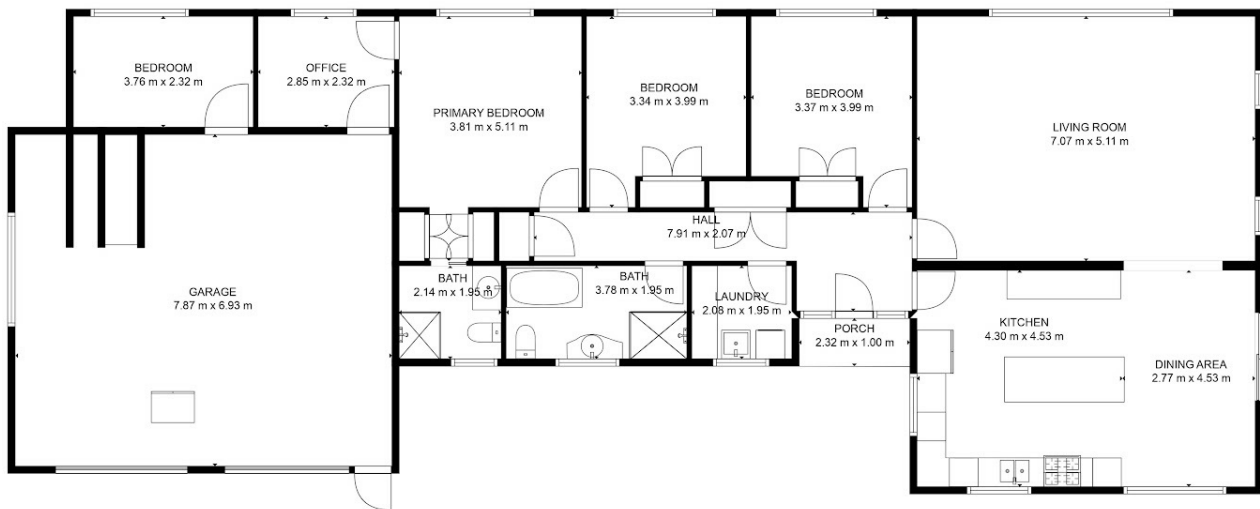


Randa Nicol

0211797786

randa@nicolrealty.co.nz

www.nicolrealty.co.nz



81 Marama Avenue South

Otatara



For Visual Purpose Only

Drawings are approximate and to be used for visual representation only. Measurements should be verified by the buyer. We take no responsibility for omissions and errors. This floorplan is provided without warranty of any kind. Sensopia disclaims any warranty including, without limitation, satisfactory quality or accuracy of dimensions.

Floor Plan by INSPIRE MEDIA WORKS

Disclaimer: Please note this floor plan is for marketing purposes and is to be used as a guide only. All dimensions are estimates only and may not be exact measurements.