

26 KALE ROAD **SPRING FARM**



FOR SALE

MODERN FAMILY LIVING IN THE HEART OF SPRING FARM ON 600 SQM!

Discover the ultimate in family living with this beautifully designed home in the prestigious Riverside Estate. Boasting an impressive layout with space for everyone, this property combines modern elegance with thoughtful functionality, making it the perfect choice for growing families or those who love to entertain.

Key Features:

- Three living spaces: Separate media room, open-plan family/dining, and a dedicated kids' breakout room.
- Four bedrooms: Built-in wardrobes in all, with an expansive walk-in robe and ensuite to the master.
- Stylish kitchen: Modern design with premium finishes and a walk-in pantry.
- Luxurious bathrooms: His-and-hers vanities in the ensuite for ultimate convenience.
- Modern features: Ducted air conditioning, ceiling-mounted speakers in the media room, alarm system, and fitted study nook.
- Outdoor living: Covered alfresco area overlooking a private, low-maintenance yard with synthetic grass.
- Ample parking: 3-car drive-through garage plus large side drive-through gate access.
- Eco-friendly: Solar system for energy efficiency.
- Prime location: Walking distance to Spring Farm Shopping Centre, parks, picturesque waterways and spring farm public school.

This home is a rare opportunity to enjoy modern, spacious living in a highly sought-after location —don't let it pass you by!

Agency Central believes that all the information contained herein is true & correct to the best of our ability however we encourage all interested parties to carry out their own enquiries.

4 BED | 2 BATH | 3 CAR

PRICE:

Just Listed

OPEN FOR INSPECTION:

N/A

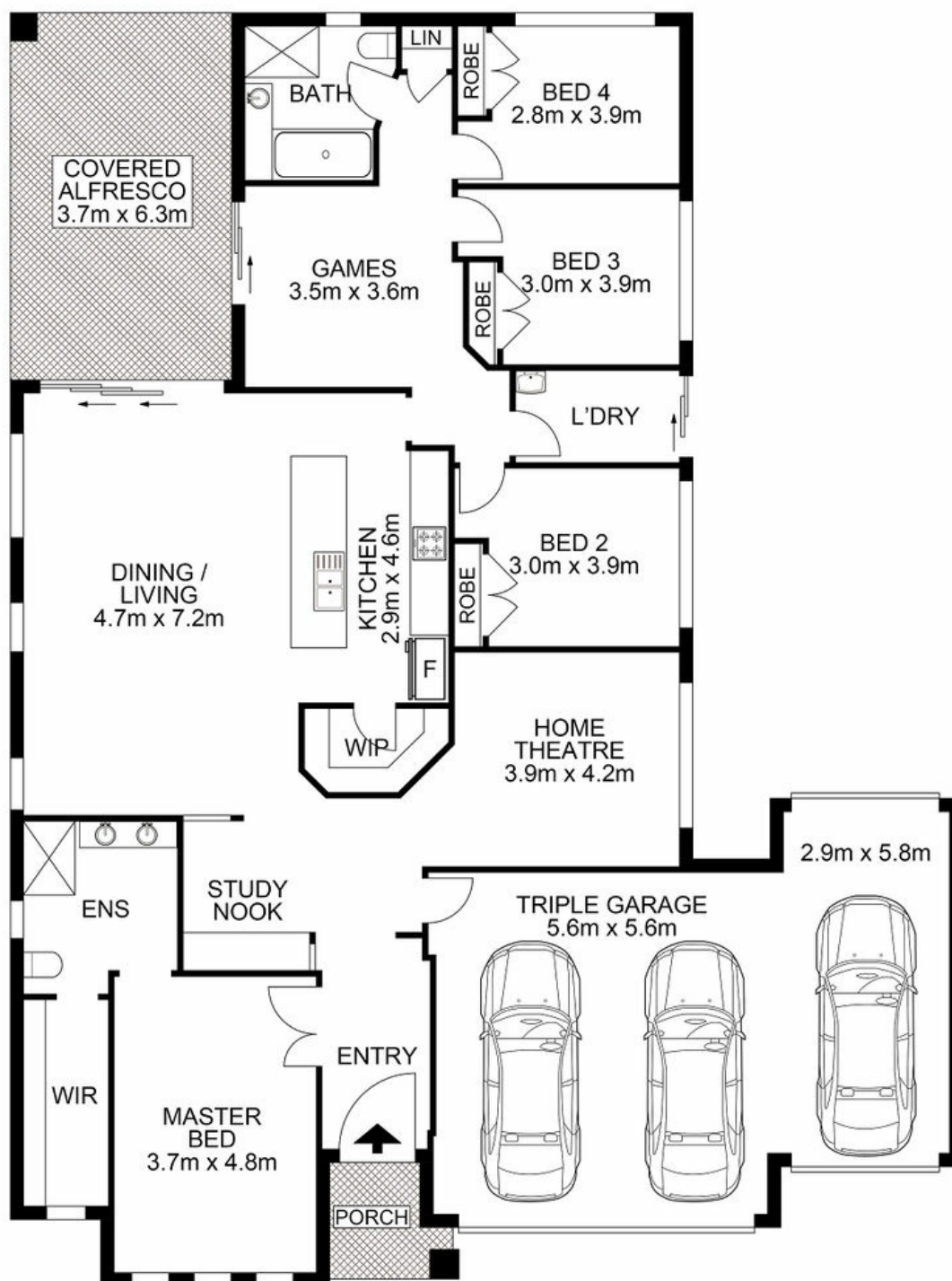


Huss Al Salemi

0411699419

huss@atrealty.com.au

www.agencycentral.com.au



 AGENCY

Disclaimer: Please note this floor plan is for marketing purposes and is to be used as a guide only. All dimensions are estimates only and may not be exact measurements.

26 Kale Road, Spring Farm

Huss Al Salemi • All measurements are approximate • Drawn for marketing purposes only

0411699419

huss@atrealty.com.au

www.agencycentral.com.au

 @realty