



**SOLD**

## ESCAPE TO YOUR OWN PRIVATE OASIS IN BEACHMERE!

Escape the hustle and bustle of city life and embrace the tranquillity of this idyllic acreage home. Nestled on 5.2 acres of lush greenery, this property offers a perfect blend of comfort, convenience, and natural beauty. A short walk to the beachfront makes this a nature lover's dream, providing the ultimate escape from the outside world.

This family-friendly property features 4 bedrooms, 2 bathrooms, a spacious living room, open-plan kitchen and dining area, a teenager's retreat, a generous patio, and an expansive wraparound veranda, perfect for entertaining and enjoying the serene surroundings.

Surrounded by peaceful, thoughtfully landscaped gardens, the property integrates seamlessly with its natural environment. At its heart lies a picturesque dam, complemented by a sparkling saltwater pool—a perfect spot for relaxation and entertainment.

Whether you're unwinding in the lush, tranquil surroundings or strolling to the nearby beachfront to soak in the peaceful ambiance, this property offers unparalleled relaxation. It's also ideal for hosting large gatherings with friends and family, creating lasting memories in a setting that beautifully combines modern comforts with the serenity of nature.

LAND: 5.2 Acres

### Features:

- Master suite with modern ensuite, air conditioning and built in robes
- 3 Additional bedrooms with built in robes (1 with air conditioning)
- Air Conditioning throughout living spaces
- Gourmet kitchen with sleek stone benchtops
- Open plan kitchen and formal dining
- Modern spacious family bathroom
- Separate laundry
- Self-contained, versatile teenagers retreat with built in bar
- 4 x 12 Carport
- 6 x 6 Double carport

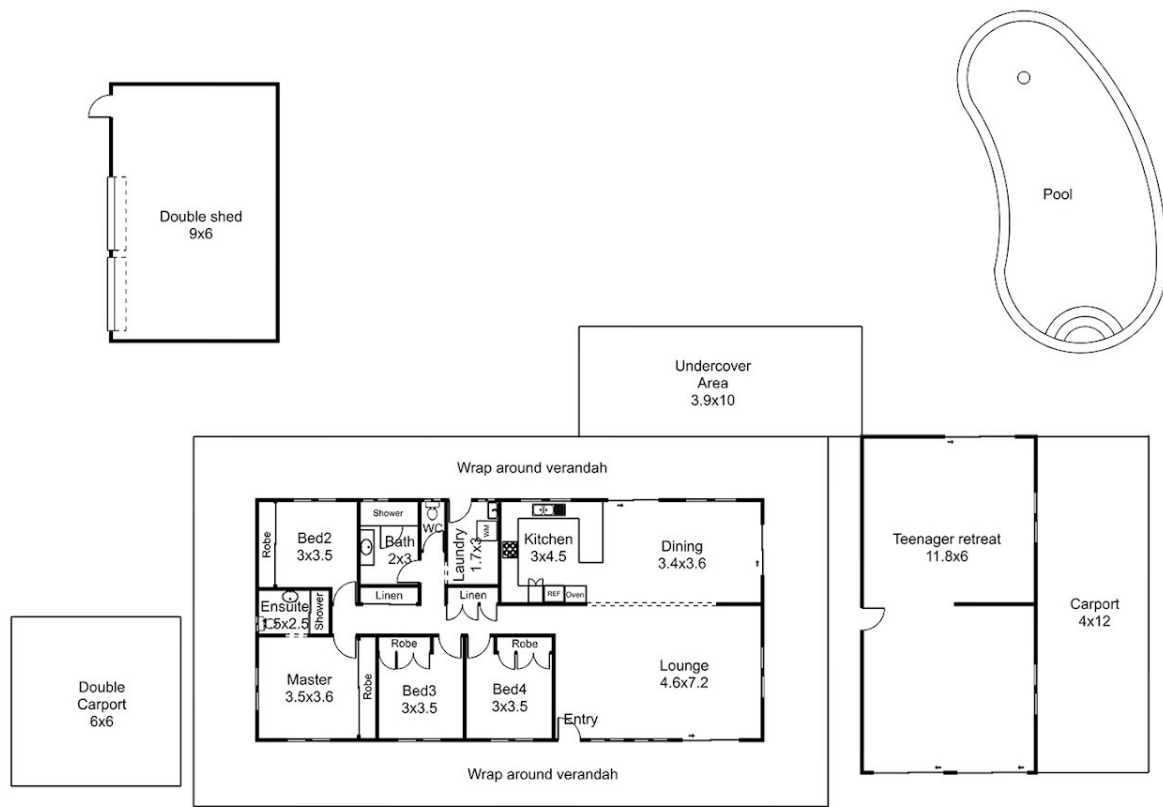
4 BED | 2 BATH | 4 CAR

PRICE:  
\$1,400,000

OPEN FOR INSPECTION:  
N/A



**Mitchell Younger**  
**0488458887**  
mitchell.younger@atrealty.com.au  
[www.atrealty.com.au](http://www.atrealty.com.au)



Floor plan, measurements and dimensions are approximate and are for illustrative purposes only. Pixmo Productions gives no guarantee, warranty or representation as to the accuracy and completeness of the floor plan.

**FLOOR PLAN:**

**2 BELLAY ROAD - BEACHMERE**

**APPROXIMATE UNDER ROOF SPACE = 314m<sup>2</sup>**

Disclaimer: Please note this floor plan is for marketing purposes and is to be used as a guide only. All dimensions are estimates only and may not be exact measurements.