

FOR SALE

BRAND NEW HOUSE WITH 4 BEDROOM + 2 LIVING AREAS+ STUDY+ DOUBLE LOCK UP GARAGE WITH THE GREAT VIEWS

Brand New House with 4 Bedroom + 2 Living Areas+ study+ Double lock up Garage with the great views

Brand New House with good size of bedroom and duel extension options downstairs along with the BA approval and structure connection. This area new development area and high demand for rent.

High, views & breezy:

You will be impressed with the style, local views and space this home with 4 bedrooms plus 2 living area and study has to offer. It is in a family-oriented area, The property position with large balcony view and entry view where you would enjoy the most.

Great location:

This home is in a high location, nested into the side of a ridge so you can enjoy local views. It is close to; shopping & schools. Access to M1 & Logan Motorway only a short drive away. Within a 15 minute drive are; University, TAFE, High Schools, Logan Hospital, Logan Hyperdome Shopping, Homemaker Centres & cinemas. This family oriented area is served well by parks (Willow, Emerald, Chris Green, Bill Norris Oval & Beenleigh Showground). Join one of the local golf clubs. Enrol the kids at the pony club. Bonza beaut!

Enjoyment:

This is not another ordinary house. As soon as you enter via the front door it greets office room lined to all the room to your right hand side and open plan living area greets you at the end with modern kitchen and as well as with large balcony with overlook. Open plan living maximises the use of available space making this layout perfect for entertaining, indoor and out. Enjoy special evenings in these open and inviting spaces while entertaining family and friends. The land size is about 480 sqm2 giving space for your children and pets to frolic endlessly. Down stairs you got big size of living area with ensuite approval for further oversizing and children paly ground area at the backside. Do not delay!

4 BED | 2 BATH | 2 CAR

PRICE:

By negotiaton

OPEN FOR INSPECTION:

N/A

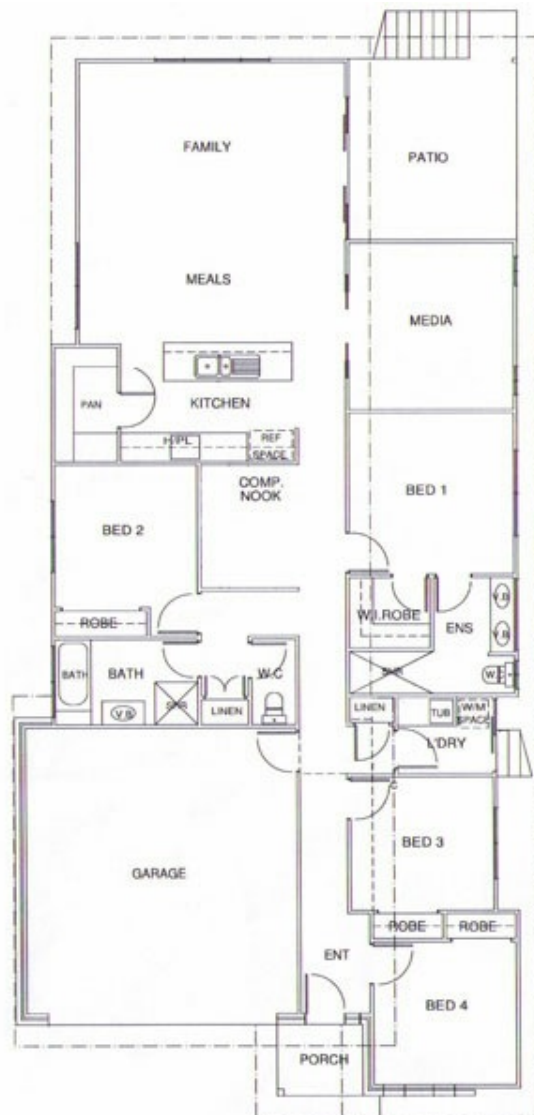


Ash Payman

0469385846

ash@atrealty.com.au

www.atrealty.com.au



Disclaimer: Please note this floor plan is for marketing purposes and is to be used as a guide only. All dimensions are estimates only and may not be exact measurements.