

4T HOMES 4U Pty Ltd

4T HOMES 4U

SOLD

STUNNING BRAND NEW CANAL HOME.

Architecturally inspired by its north facing waterfront location, this brand new residence is filled with natural light and offers low maintenance executive living, or perhaps the ideal dwelling for those looking for a base to call home between extended trips away. Located on 'Sandpiper Canal' enabling direct high-mast access to Moreton Bay and beyond, 15A Courageous Ct, Newport is now ready for its first owners to call it home.

Lower level features;

- The wide entry invites you beyond to the open plan kitchen, living and dining
- Large 'stacker-doors' seamlessly blend indoor and outdoor entertaining
- European appliances, a well-designed walk-through pantry, powder room and laundry with ample built-in storage
- The huge timber deck offers access to the brand new 8.5m plumbed pontoon
- Clean, crisp lines throughout, from the stone bench tops to the open riser staircase leading to the upper level

Upper level features;

- Additional family room ensuring space for all and separation when needed
- A master suite complete with large balcony and water views
- An ensuite with his & hers vanity & shower + dual walk-in robes
- 3 huge bedrooms with ceiling fans and built-in wardrobes
- Spacious family bathroom with separate shower and bath + a separate toilet
- Ample storage including central entertainment hub for home automation via iPad

Other features include;

- Ducted air-conditioning throughout
- Alarm and video intercom system
- Smart-wired ready for complete home automation
- Automated entry via pedestrian & vehicular security gates

Contact Mike by email or phone for additional photos and further information, or to book a private viewing today.

Property Code: 1294

4 BED | 2 BATH | 2 CAR

PRICE:
\$1,150,000

OPEN FOR INSPECTION:
N/A

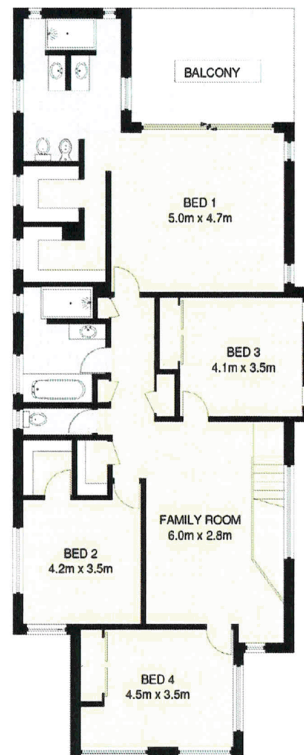


Mike Smithers
0402221163
mikesmithers@atrealty.com.au
www.atrealty.com.au

PROUDLY PRESENTED BY:



Lower Level



Upper Level

Approximate Gross Internal Area
Lower Level (Including Garage)
136.1 sqm / 1465 sq ft
Upper Level = 143.2 sqm / 1541 sq ft
Total Internal Area = 279.3 sqm / 3006 sq ft
External Area = 233.5 sqm / 2513 sq ft

Illustration for identification purposes only, measurements are approximate, not to scale.

Disclaimer: Please note this floor plan is for marketing purposes and is to be used as a guide only. All dimensions are estimates only and may not be exact measurements.

15A COURAGEOUS COURT, NEWPORT 4 BED 2 BATH 2 CAR

Mike Smithers
0402221163
mikesmithers@atrealty.com.au
www.atrealty.com.au

