



**SOLD**

## DUAL LIVING - WALK TO THE WATERFRONT AND SCHOOLS

This location is hard to beat - A short stroll past the local cafe will have the kids at school at either Shorncliffe State School or St Patricks College, and why not continue on enjoying a waterfront walk on your way home - the perfect way to start your day!

Constructed in 2008 with 'dual living' in mind, the floorplan is perfect for families with a need for occasional or permanent guest accommodation.

Upstairs;

- Open-plan kitchen/lounge opening to covered timber deck
- Stainless steel appliances incl. dishwasher and electric cooktop
- 3 good sized bedrooms with fans and built-in wardrobes, ensuite to main
- Modern Bathroom with tub and separate shower & separate toilet
- Ceiling fans to living area

Downstairs;

- Open plan living and kitchen
- Quality appliances, large gas cooker and dishwasher
- Extra-large bedroom with ensuite
- Additional powder room
- Covered outdoor entertaining area
- Laundry in garage

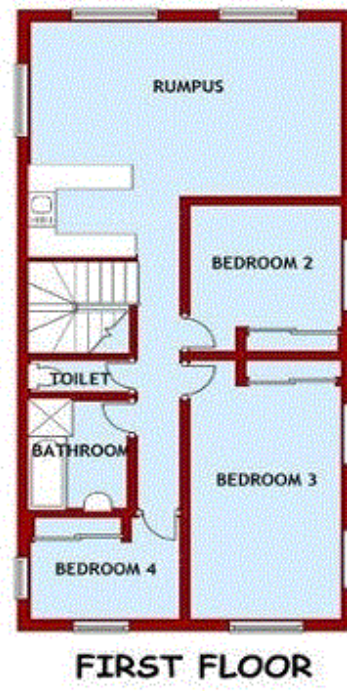
4 BED | 2 BATH | 1 CAR

PRICE:  
\$765,000

OPEN FOR INSPECTION:  
N/A



**Mike Smithers**  
**0402221163**  
mikesmithers@atrealty.com.au  
[www.atrealty.com.au](http://www.atrealty.com.au)



Disclaimer: Please note this floor plan is for marketing purposes and is to be used as a guide only. All dimensions are estimates only and may not be exact measurements.