

FOR SALE

DUAL LIVING POTENTIAL.

480 Anzac Ave is a solid family home with service road access, that has had major renovations over the last 10 years and been a great investment property for the current owners for the last 5. The internal layout is modern, with an open plan and high vaulted ceilings.

Upstairs;

- * 3 large bedrooms (all with built-ins)
- * Polished timber floors throughout
- * Open plan living with feature windows
- * Air-conditioning in both living areas
- * Quality kitchen with plenty of storage & dishwasher
- * Main bathroom & separate toilet
- * Lovely front balcony to sit with a drink and watch the world go by

Downstairs;

- * large utility room (with built-in wardrobe)
- * Separate airconditioned living area
- * Shower & toilet
- * Laundry
- * Covered outdoor entertaining area
- * Double lock up remote garage
- * Solar panels for reduced power costs
- * Solar panels help keep the power bill low

The 626sqm block is fully fenced and offers a secure place for kids and pets to play and the side access provides ample room for the addition of a pool or large shed.

This location couldn't be more convenient - walking distance to Peninsula Fair Shopping Centre, state and private schools, Bunnings and the railway station.

Don't delay, contact Mike or Dave for further information and arrange an inspection today – this home will not last!

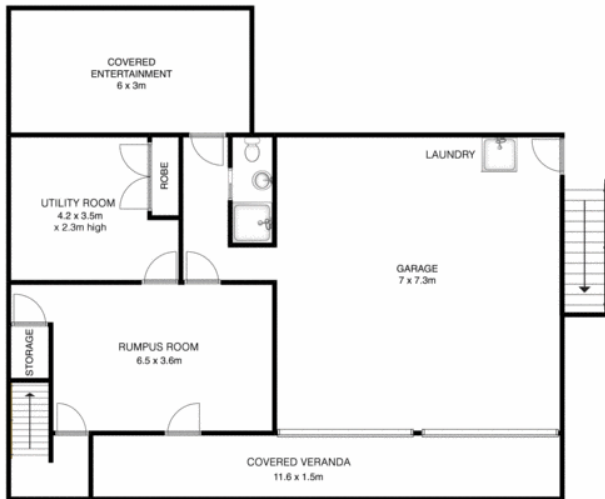
3 BED | 2 BATH | 2 CAR

PRICE:
\$700,000

OPEN FOR INSPECTION:
N/A



Mike Smithers
0402221163
mikesmithers@atrealty.com.au
www.atrealty.com.au



480 ANZAC AVENUE, KIPPA - RING

THE FLOOR PLAN INCLUDING FURNITURE, FIXTURE MEASUREMENTS AND DIMENSIONS ARE APPROXIMATE AND FOR ILLUSTRATIVE PURPOSES ONLY.
SIMMS AGENCY GIVE NO GUARANTEE, WARRANTY OR REPRESENTATION AS TO THE ACCURACY AND LAYOUT ALL ENQUIRIES MUST BE MADE DIRECTLY TO THE AGENT,
VENDOR OR PART REPRESENTING THE PROPERTY

Disclaimer: Please note this floor plan is for marketing purposes and is to be used as a guide only. All dimensions are estimates only and may not be exact measurements.