



SOLD

3 PROPERTIES TO THE WATERFRONT!

This home is all about the location. You are a stone's throw from the water with Pelican Park only 200m away offering a boat-lovers paradise amongst acres of waterfront parkland. Bike and walking paths stretch for kilometers, passing by the nearby Bramble Bay Bowls Club, Belvedere hotel and the Redcliffe Golf Course. Shops, medical facilities and both primary and secondary schools are also within a short walk.

Features include;

- This is a large, solid home of brick, timber & tile construction
- The location, only meters from the waterfront at Pelican Park
- The 594sqm block offers side access & potential for water views with a 12m building height restriction & 'Next Generation' zoning.
- Multiple living areas and a large sunroom
- Great tenants in place until June
- Second toilet on the ground level
- Huge potential to develop downstairs into a functional living/utility space

Call or email Mike for further information and arrange an inspection today.

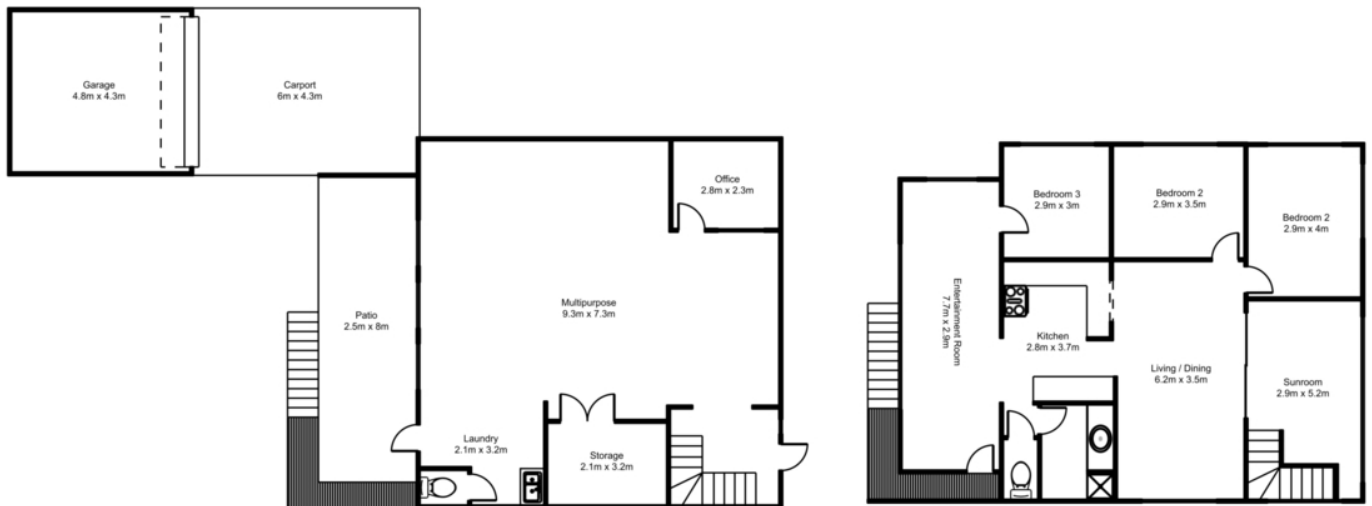
3 BED | 1 BATH | 1 CAR

PRICE:
\$750,000

OPEN FOR INSPECTION:
N/A



Mike Smithers
0402221163
mikesmithers@atrealty.com.au
www.atrealty.com.au



9 LAURA STREET, CLONTARF

THIS FLOOR PLAN INCLUDING FURNITURE, FIXTURE MEASUREMENTS AND DIMENSIONS ARE APPROXIMATE AND FOR ILLUSTRATIVE PURPOSES ONLY. SIMMS AGENCY GIVE NO GAURANTEE, WARRANTY OR REPRESENTATION AS TO THE ACCURARY AND LAYOUT. PLEASE DIRECT ALL QUESTIONS REGARDING THE PROPERTY TO THE AGENT, VENDOR OR PARTY REPRESENTING THE PROPERTY

Disclaimer: Please note this floor plan is for marketing purposes and is to be used as a guide only. All dimensions are estimates only and may not be exact measurements.