



SOLD

WATERFRONT RETIREMENT LIVING.

Palm Lakes is synonymous with lifestyle communities and 'Bayside' offers the best in convenience and hassle free over 50's living.

This immaculate free-standing home is only 9 years young and is situated in a quiet part of the resort.

Villa 278 borders the waterfront parkland, with the foreshore walk enjoying views across Deception Bay to Moreton Island.

Palm Lakes Resort is walking distance to shops and cafes and offers facilities that are second to none - Enjoy a game of bowls, tennis or just have a swim in the heated indoor pool, there are lots of recreational activities to enjoy while socialising with other residents.

This is the perfect opportunity to downsize and enjoy your retirement by the sea.

- Good sized entrance foyer
- Gourmet kitchen with stone benchtops, gas cook top & electric oven
- Big main bedroom with ensuite, large walk in robe and air-con
- Second bedroom with built-ins
- Large study/office
- Open-plan dining and living area with air-con
- New air-cons and fans in all rooms
- 1.5 car lock-up garage with internal access
- Double insulation in roof and throughout for added cooling
- Side access with single gate
- Large plumbed water tank and tool shed
- Enclosed patio area off main living with louvres and water views for afternoon sea breeze
- Double glazed windows
- Separate laundry
- All rooms have fans
- Tiled entrance, living and dining

Inspections by appointment only, don't wait - contact Dave by phone or email today for a full information pack and to arrange your private viewing.

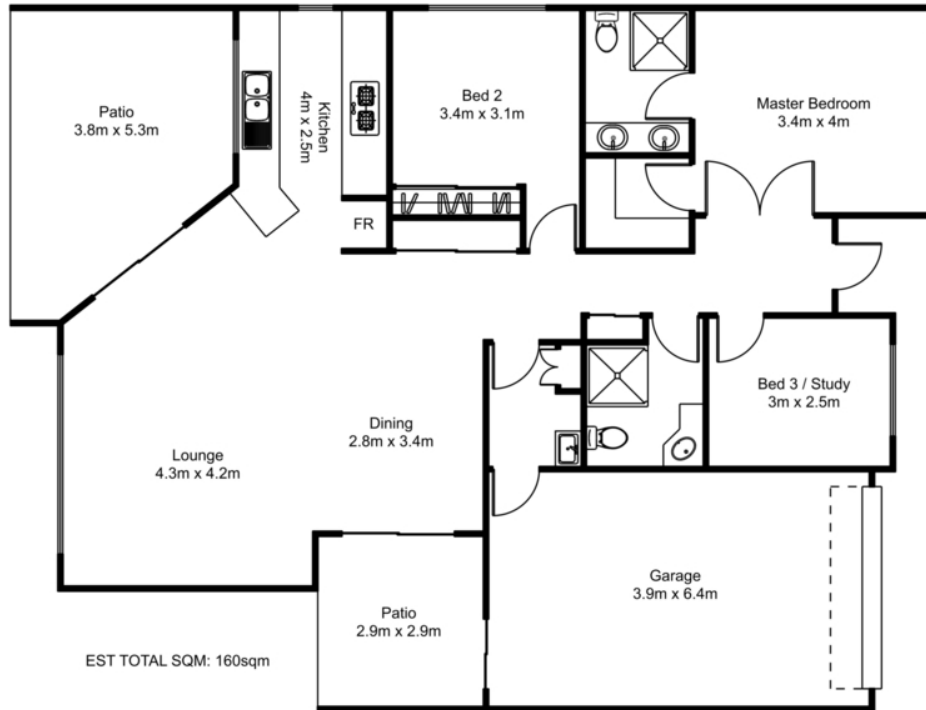
2 BED | 2 BATH | 1 CAR

PRICE:
\$541,000

OPEN FOR INSPECTION:
N/A



Mike Smithers
0402221163
mikesmithers@atrealty.com.au
www.atrealty.com.au



278/1 Webster Road, Deception Bay | Palm Lake Resort

THIS FLOOR PLAN INCLUDING FURNITURE, FIXTURE MEASUREMENTS AND DIMENSIONS ARE APPROXIMATE AND FOR ILLUSTRATIVE PURPOSES ONLY. SIMMS AGENCY GIVE NO GAURANTEE, WARRANTY OR REPRESENTATION AS TO THE ACCURARY AND LAYOUT. PLEASE DIRECT ALL QUESTIONS REGARDING THE PROPERTY TO THE AGENT, VENDOR OR PARTY REPRESENTING THE PROPERTY

Disclaimer: Please note this floor plan is for marketing purposes and is to be used as a guide only. All dimensions are estimates only and may not be exact measurements.