

FOR SALE

CITY LIVING AT ITS BEST – DARWIN AT YOUR DOORSTEP

If you're a city lover, foodie, or someone who thrives on a relaxing lifestyle, this apartment offers it all. Nestled in the heart of Darwin, just steps away from vibrant restaurants, bars, cafés, and boutique shops.

Fitness enthusiasts will adore the nearby Esplanade Promenade, complete with lush lawns and scenic exercise trails.

Property Highlights:

- Exclusive access to a gym and swimming pool
- Stylish, modern interiors with a functional galley-style kitchen and ample storage
- Two side-by-side basement car parks
- A spacious balcony perfect for entertaining, offering stunning harbour and city views alongside breathtaking sunsets
- The master bedroom is a light-filled retreat featuring panoramic sea views, mirrored walk-in robes, a luxurious ensuite
- The second bedroom includes built-in wardrobes

Key Neighbourhood Features:

- St Mary's Catholic Primary School (0.36 km)
- Larrakeyah Primary School (1.09 km)
- St John's Catholic College (2.12 km)
- Coles Darwin (400 m)
- Woolworths Darwin City (600 m)
- Smith Street Mall (850 m)
- Civic Park (1.1 km)
- Waterfront Precinct (1.3 km)

Additional Information:

- Year Built: 2010 Circa
- Status:
- Rental Estimate: \$650 - \$750 per week
- Body Corp Manager: North Management

2 BED | 2 BATH | 2 CAR

PRICE:
\$495,000

OPEN FOR INSPECTION:
N/A



Byron Wauchope
0424181530
byron@atrealty.com.au
www.atrealty.com.au



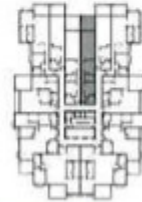
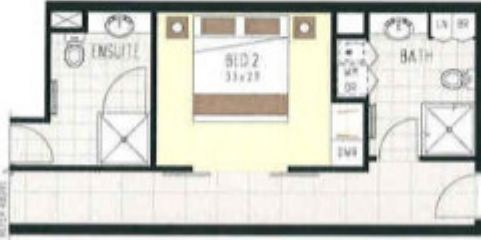
LEVEL 10 APARTMENT 1006
LEVEL 9 APARTMENT 909
LEVEL 8 APARTMENT 808
LEVEL 7 APARTMENT 707
LEVEL 6 APARTMENT 606
LEVEL 5 APARTMENT 505
LEVEL 4 APARTMENT 404

2 BED APARTMENT TYPE F

INTERNAL	85m ²
EXTERNAL	16m ²
TOTAL	101m ²

C2 65PLANADE, DARWIN

2 BED APARTMENT TYPE F



09-07-18

Disclaimer: Please note this floor plan is for marketing purposes and is to be used as a guide only. All dimensions are estimates only and may not be exact measurements.