

# FOR LEASE

## IS THIS YOUR DREAM OFFICE?

Impress your clients with this luxury office.

Situated on Edward St, adjacent to the Botanical Gardens, this prime office location in the CBD offers a serene environment perfect for your team.

To relax from the busy work, just a short stroll away, you'll find a variety of restaurants and amenities for your team to enjoy.

It has a modern design with a focus on functionality to provide maximum efficiency for your workforce.

Nothing has been forgotten; It Includes kitchen, waiting/informal meeting area, and breakout area.

It comes ready to go with high-quality workstations and furniture.

If you are thinking about a move to the CBD, and want luxury and convenience, have a look at this.

Contact me now – it will be available soon. We can do a deal.

0 BED | 0 BATH | 0 CAR

### PRICE:

\$8654 per month plus GST (includes outgoings) no more to pay.

### OPEN FOR INSPECTION:

N/A

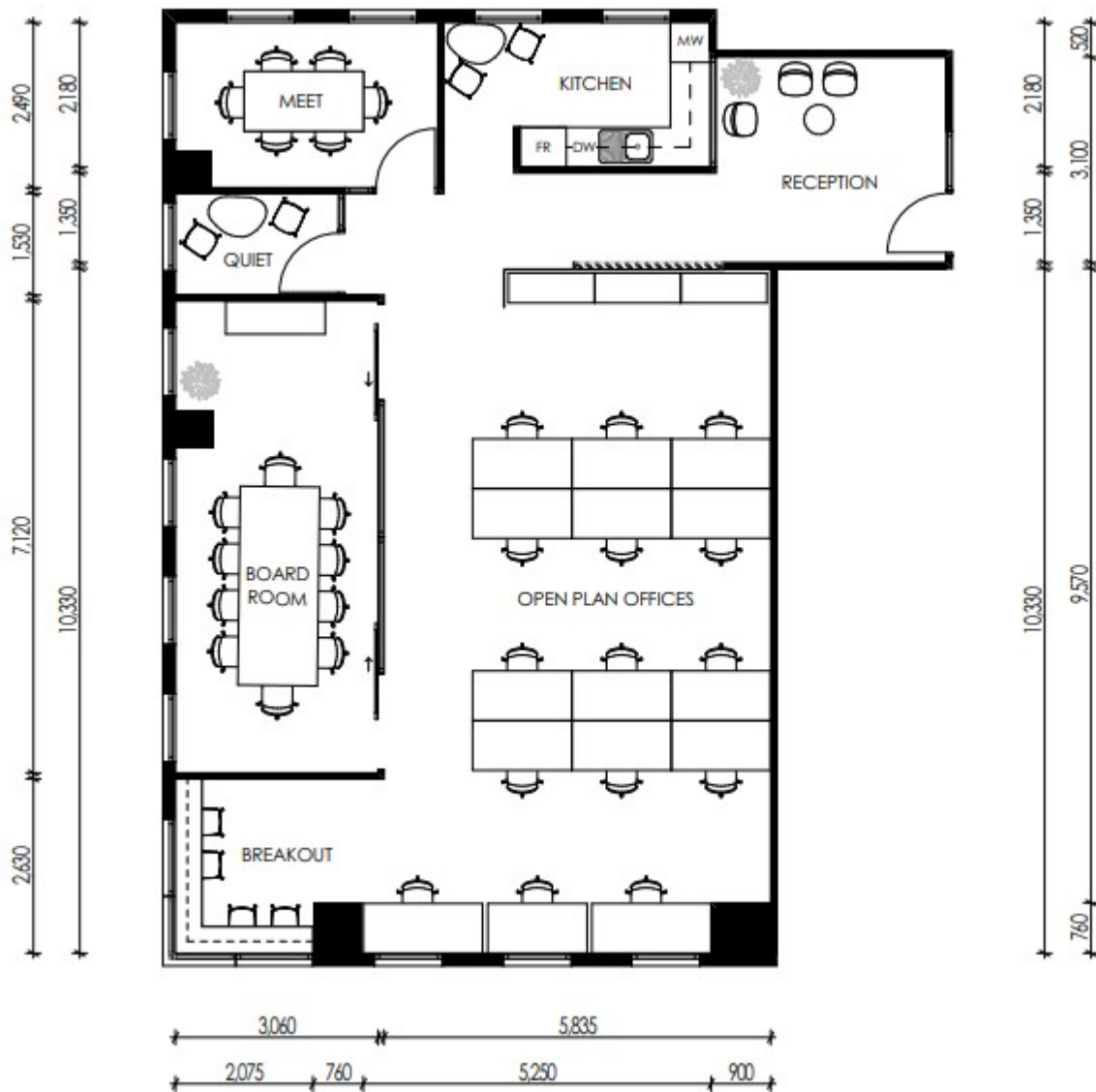


**Gavin Roberts**

**0404965140**

[gavinroberts@atrealty.com.au](mailto:gavinroberts@atrealty.com.au)

[www.atrealty.com.au](http://www.atrealty.com.au)



Disclaimer: Please note this floor plan is for marketing purposes and is to be used as a guide only. All dimensions are estimates only and may not be exact measurements.