



# FOR SALE

## MOVE IN READY FAMILY HOME

This home is move in ready and is situated on an elevated 5000 square metre (1.24 acres) block at Gumma, approximately 9km from Macksville.

As soon as you step inside, you'll be greeted by the warm and welcoming atmosphere of this beautiful well kept home. The spacious floor plan of 192 square meters allows for seamless flow between the living, dining, and kitchen areas. Natural light floods the space, creating a bright and airy feel. The neutral colour palette and high ceilings add to the sense of openness and elegance.

The built-in wardrobes in each bedroom provide plenty of storage, while the master bedroom features a luxurious ensuite for added convenience.

This property has been meticulously maintained, with every detail carefully considered to ensure the utmost comfort and convenience for its future owners.

Step onto the expansive deck and take in the breath-taking views of the surrounding countryside or take a refreshing dip in the sparkling, and inviting salt water inground pool. Imagine sipping your morning coffee as you watch the sunrise over the rolling hills or hosting a pool party with friends and family on a warm summer evening.

And with two covered car parks, you'll never have to worry about finding a spot for your vehicles. Whether you're a young family looking for a spacious home to grow into or a retiree seeking a peaceful retreat, this property has something for everyone.

Don't miss out on the opportunity to make this your forever home.

Contact Jennifer on 0409 765 032 now to schedule a viewing and start living your dream life.

**4 BED | 2 BATH | 2 CAR**

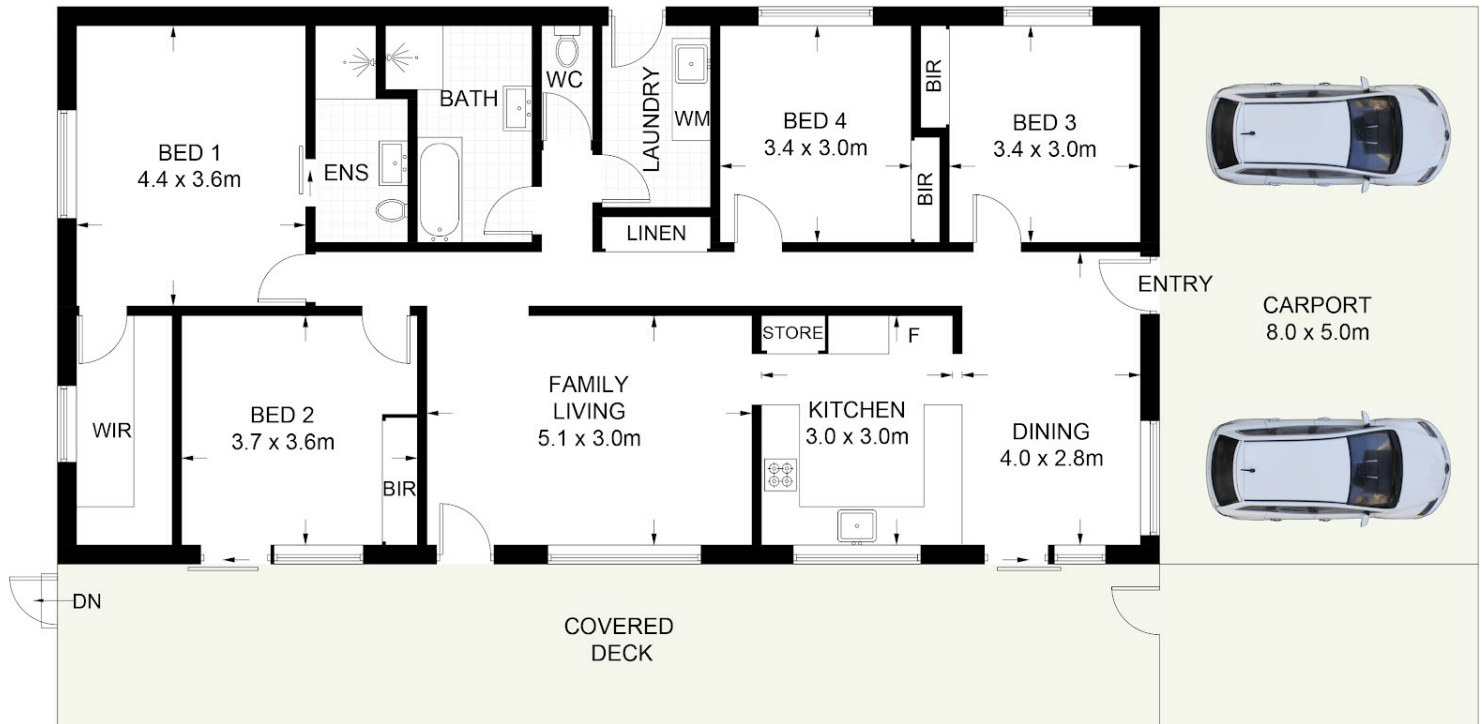
**PRICE:**  
\$950,000 - \$990,000

**OPEN FOR INSPECTION:**  
N/A



**Jennifer Miller**  
**0409765032**  
jmiller@atrealty.com.au  
[www.atrealty.com.au](http://www.atrealty.com.au)

Approximate Gross Internal Area = 136.8 sq m



**23 Acacia Road, Gumma, NSW 2447**

DISCLAIMER: PLANS SHOWN ARE FOR PRESENTATION PURPOSES AND ARE NOT PART OF ANY LEGAL DOCUMENT. ALL MEASUREMENTS AND FIGURES ARE APPROXIMATE.

Disclaimer: Please note this floor plan is for marketing purposes and is to be used as a guide only. All dimensions are estimates only and may not be exact measurements.