



SOLD

COASTAL HAMPTONS ELEGANCE

Positioned in a quiet tree lined cull de sac, this low set waterfront gem, offers privacy & resort-style living. The rendered home has been completely renovated to a high standard, evoking resort style living, ensuring every day is a peaceful holiday!

From the moment you step inside, you will be enveloped by Coastal Hamptons elegance, which leads you to a tranquil oasis enhancing the home's "sanctuary- like" ambiance.

The expansive outdoor alfresco areas set in lush tropical gardens, can easily cater for social / family gatherings, including built in wet bar. Quality bifold shutters have been installed to ensure year round privacy & protection from the elements.

The quality kitchen includes bifold windows to take in rainforest & glorious water views. Well appointed European NEFF steam ovens & integrated dishwasher, which are WiFi connectable, Granite bench tops with herringbone splash-backs. Oliveri black stone double sink with tempered glass top is a bonus when entertaining.

For the discerning coffee lover - a separate coffee station is attached to kitchen area

Easy to care for Timber laminated flooring is utilized throughout the home & new carpets to bedrooms.

The principal bedroom retreat is a true haven, offering a luxurious walk-in robe & huge ensuite, floor to ceiling tiling, plenty of storage & double bowl sinks.

Also attached to the bedroom is a fully enclosed sunroom overlooking the water—a perfect spot to begin or end your day in peaceful seclusion. Or perhaps a bonus room for extra guests.

Outstanding Features:

- Land size 824m
- Large 20m water-frontage
- New 10m x 4m Pontoon & pylons -to cater for large boats
- Chef's kitchen with NEFF steam ovens & Integrated dishwasher - Wi-Fi connect ability
- Purpose built Coffee Station off the kitchen
- Butler pantry and connected laundry
- Indoor / Outdoor alfresco entertaining area
- Built in Wet bar plumbed to Kegerator to enjoy your favourite cool ale or cider.
- Easily maintained tropical garden features

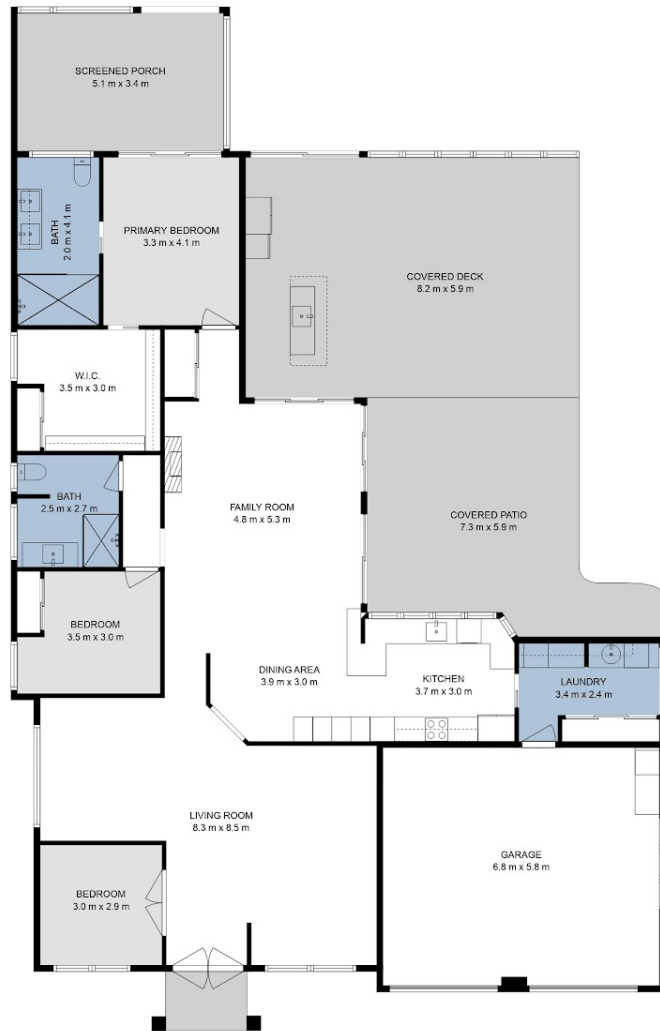
3 BED | 2 BATH | 4 CAR

PRICE:
\$1,570,000

OPEN FOR INSPECTION:
N/A



Elena Stevens
0415230521
 elena@esre.com.au
 www.esre.com.au



This floor plan is intended to give a general indication of the layout only. Sizes & dimensions are approximate, actual may vary.



Disclaimer: Please note this floor plan is for marketing purposes and is to be used as a guide only. All dimensions are estimates only and may not be exact measurements.