



SOLD

IMMACULATE HOME IN RHSZ

* DUE TO AN OVERWHELMING AMOUNT OF BUYER ENQUIRIES WE WILL BE ADDING TWO MORE HOME OPENS THIS WEEKEND! SATURDAY 15/2/25 & SUNDAY 16/2/25 - 10AM TO 10.30AM SEE YOU THERE!! *

You'll fall in love with this charming and contemporary duplex home set on 403m² of land. Situated in one of the best locations Bateman has to offer, in a quiet & secluded cul-de-sac facing the leafy green Chamberlain Circle Reserve, this standout abode offers much more than initially meets the eye. NO STRATA FEES - NO COMMON WALLS

FEATURES INCLUDE:

- King size master bedroom with WIR & updated ensuite
- Bedrooms 2 & 3 with BIR – bedroom 3 currently used as a study
- Family size bathroom tastefully renovated, separate toilet
- Open plan kitchen fit for a king (or queen!) fully renovated, this kitchen is a dream. Featuring Miele induction cook top, Miele oven, Miele dishwasher, double sink, large pantry, an abundance of drawers & cupboards with engineered stone benchtops, easy care glass splash backs
- Family room perfect for relaxing or dining
- Functional extended family living space, currently used as dining & loungeroom with sliding doors to rear patio - full council approval
- Light filled comfortable front loungeroom, overlooking well established, beautifully maintained garden & Chamberlain Circle Reserve
- Nice size laundry with sliding door to outside
- Bonus indoor storeroom with professionally fitted cupboards & bench tops
- Beautiful easy care bamboo flooring throughout
- High quality security screens on all windows and doors
- Double garage – remote door
- Paved Alfresco with beautiful gardens, East facing for year round enjoyment
- Attractive garden shed is a free standing sauna (not in working order)
- Money saving solar panels
- Multizoned ducted reverse cycle aircon – Daikin
- Quality curtains and blinds throughout
- Freshly painted both inside & out, roof also resprayed
- Ceiling fans, gas bayonets
- Rheem gas storage hot water

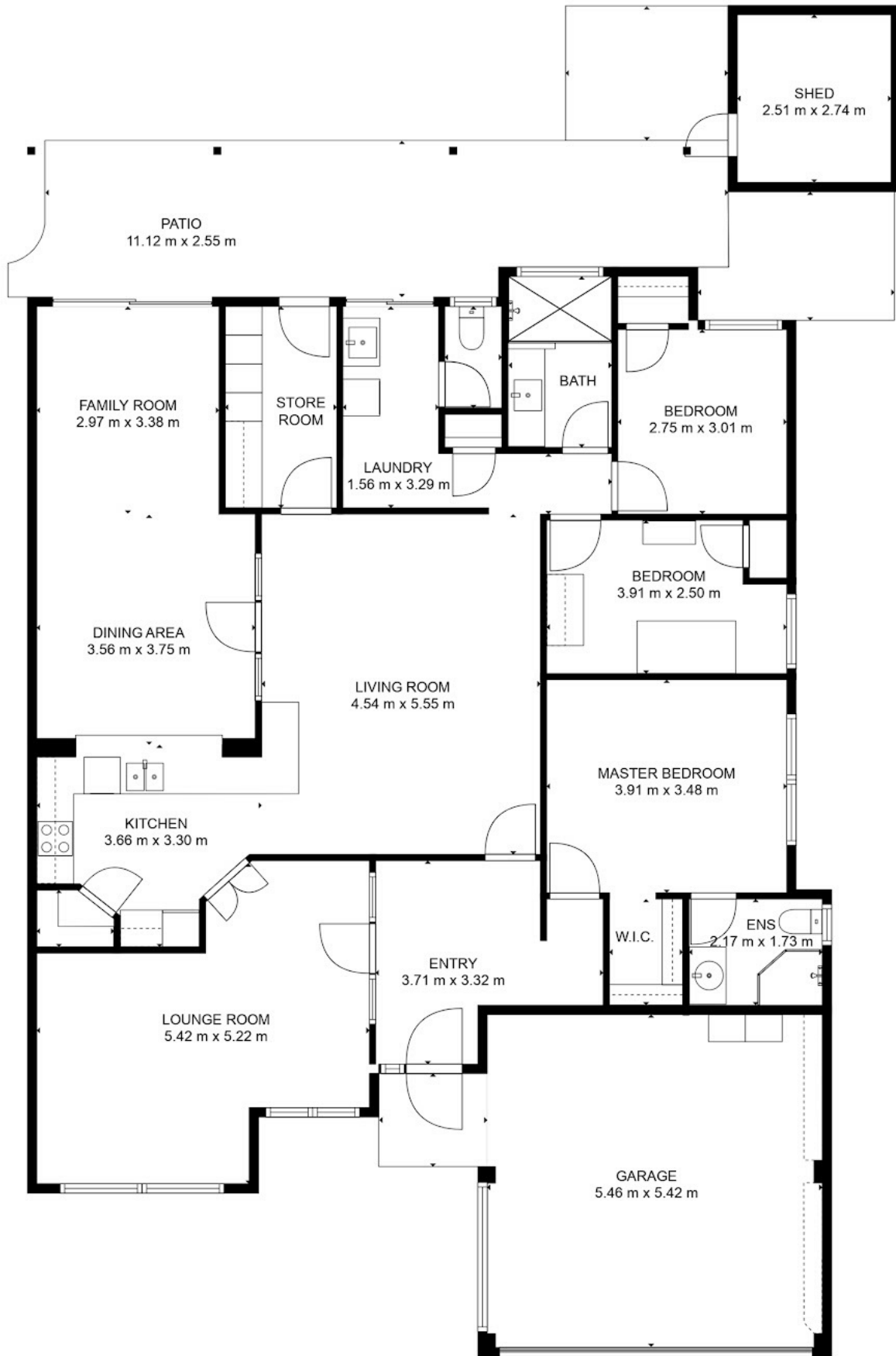
3 BED | 2 BATH | 2 CAR

PRICE:
\$1,038,000

OPEN FOR INSPECTION:
N/A



Jill Groves | Chloe Leggett Team
0408765240
jillgroves@atrealty.com.au
www.atrealty.com.au



Disclaimer: Please note this floor plan is for marketing purposes and is to be used as a guide only. All dimensions are estimates only and may not be exact measurements.

@realty 7b Cary Green, Bateman

Jill Groves | Chloe Leggett Team

0408765240

jillgroves@atrealty.com.au

www.atrealty.com.au

Not to scale • All measurements are approximate • Drawn for presentation purposes only

@realty