



# FOR SALE

## PICTURE PERFECT 2 ACRE PRIVATE RETREAT

Want some room to move? This gorgeous, 2 acre retreat with brand new 20mt x 10mt x 6mt clearance, powered shed is located way above sea level in the mountains at Blackwater Hole Creek, Hazledean. The home was built in 2009 and consists of 2 bedrooms plus a Large Sunroom which is currently being used as a main bedroom. Floating floors throughout, spacious, airconditioned, open plan Dining/kitchen/lounge with brekky bar, new dishwasher and oven, ample bench space and all the creature comforts you could need for cooking up a storm or entertaining your friends. The other 2 bedrooms are to the opposite end of the home for added privacy and both have built in robes and ceiling fans. The central bathroom has a double vanity, separate shower to bath and also has a ceiling fan. The home has tinted windows throughout and security doors and fly screening. There is a 2 bay shed with double awning as well as the new shed which has electric roller doors and all piping in place to add a bathroom if desired. There is a variety of fruit trees including: bananas, lemons, limes, lychees, oranges, peaches, mandarins, mango and dragon fruit. There is also a variety of gardens with irrigation on timers for extra convenience. The property has a bore and a 27,000lt Rainwater tank with new pump. The current owners have done so many extras to make sure the property remains extremely low maintenance including: new septic (10K), new Daikin Split system airconditioner to the sunroom, Switch for generator if you lose power during a storm, Starlink Internet (super fast), gas hotwater and cooking, wheelchair access via the ramp and the list goes on. If you're thinking about a tree change, come and experience this slice of paradise. You may even get a glimpse of the local Koala who visits regularly or a kangaroo or two. Just 45 mins to Mackay, close to the mines so call Jodie now for your private viewing, inspections are strictly by appointment only. Please note: due to the fact the sellers are in the process of packing, previous photos have been used.

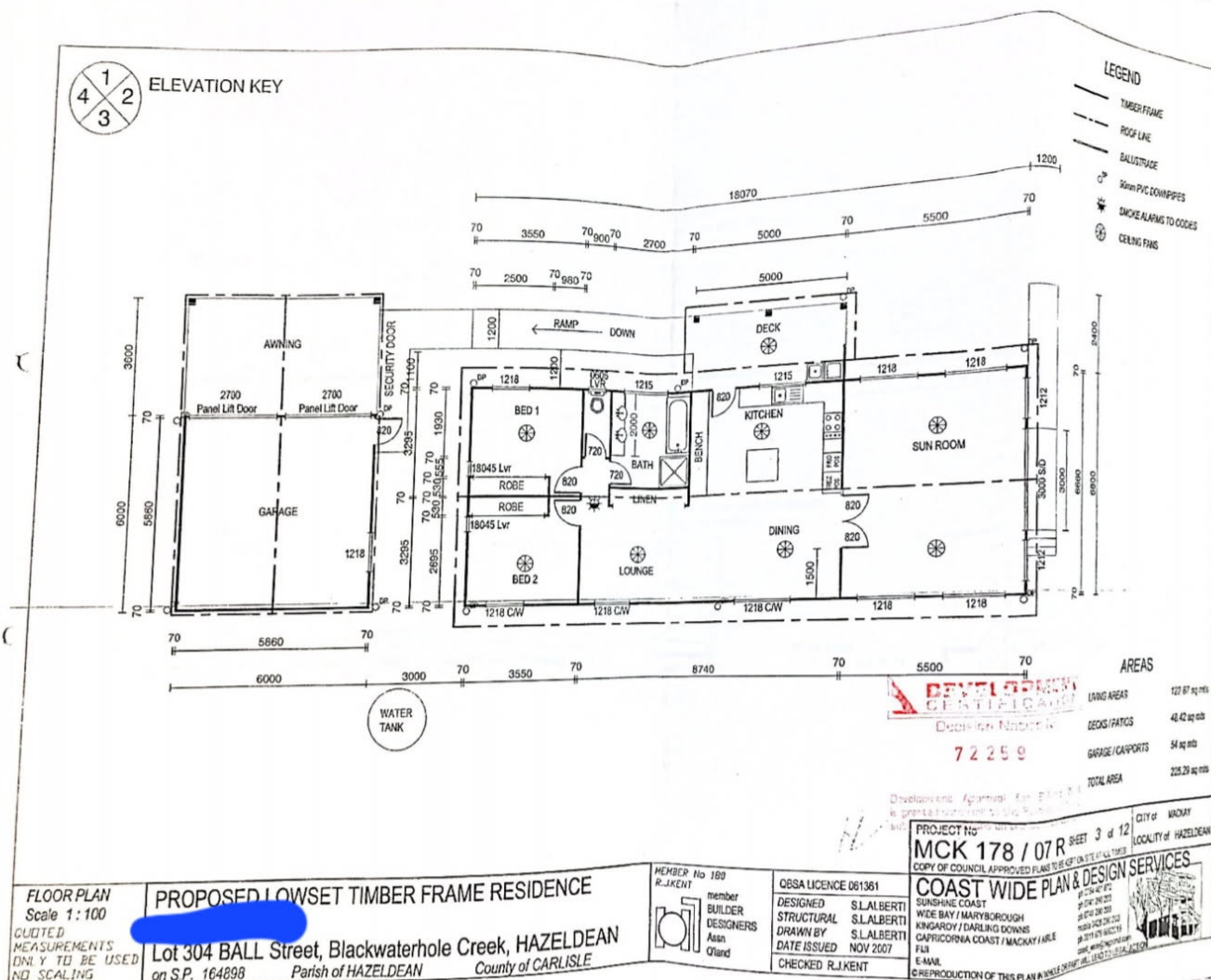
3 BED | 1 BATH | 9 CAR

**PRICE:**  
SOLD BY JODIE COWIN

**OPEN FOR INSPECTION:**  
N/A



**Jodie Cowin**  
**0407211322**  
jodiecowin@atrealty.com.au  
[www.atrealty.com.au](http://www.atrealty.com.au)



Disclaimer: Please note this floor plan is for marketing purposes and is to be used as a guide only. All dimensions are estimates only and may not be exact measurements.