



FOR SALE

-UNDER CONTRACT - EXECUTIVE LIVING AT IT'S BEST!

Welcome to your dream home, where elegance meets comfort! This stunningly crafted residence invites you to experience the pinnacle of modern living, offering a perfect balance of luxury and functionality. From its spacious interiors to the ultimate outdoor retreat, every corner is thoughtfully designed to elevate your lifestyle.

Immerse yourself in luxury with this impeccably designed residence. Discover a large master suite complemented by a walk-in robe and ensuite. Three generously sized additional bedrooms are centred around its own private lounge area. At the heart of the home lies a modern kitchen, featuring top-tier stainless-steel appliances and expansive stone countertops that effortlessly merge with the open-plan living and dining space. Within your own media room indulge in cosy evenings creating unforgettable moments.

Looking for extra storage and functional space? This property features a large, secure shed – perfect for storing tools, equipment, or creating a workshop. Complementing this is a versatile carport, ideal for protecting your vehicles, boat, or caravan from the elements.

Step outside to discover an entertainer's dream: an expansive patio space overlooking a glistening saltwater pool, complete with meticulously landscaped gardens inviting you to relax in style, whether sipping cocktails in the sun or hosting sophisticated soirées.

Don't just dream it! live it. This exceptional property is more than a home; it's a lifestyle. Your dream home awaits.

Land Size: 3,109 m²
Builder: Coral Homes
Year Built: 2007 (1 Owner)

MAIN HOME FEATURES:

- Large master suite with large walk-in robe and ensuite
- 3 additional bedrooms with built-in robes & fans
- 3 bedrooms centred around a private lounge
- Family bathroom

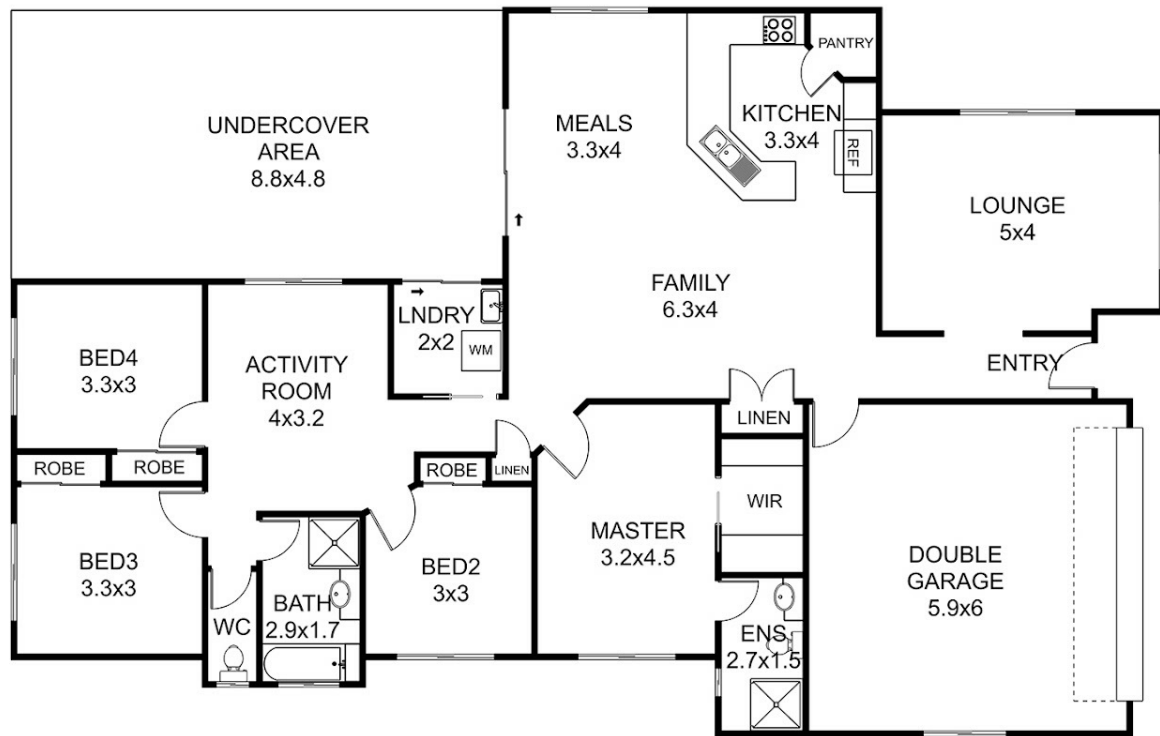
4 BED | 2 BATH | 6 CAR

PRICE:
UNDER CONTRACT

OPEN FOR INSPECTION:
N/A



Mitchell Younger
0488458887
mitchell.younger@atrealty.com.au
www.atrealty.com.au



Floor plan, measurements and dimensions are approximate and are for illustrative purposes only.
 Pixmo Productions gives no guarantee, warranty or representation as to the accuracy and completeness of the floor plan.

FLOOR PLAN
 152 FACER ROAD - BURPENGARY

APPROXIMATE UNDER ROOF SPACE = 217m²

Disclaimer: Please note this floor plan is for marketing purposes and is to be used as a guide only. All dimensions are estimates only and may not be exact measurements.