

11 MAROUBRA CRESCENT WOODBINE



FOR SALE

ATTENTION BUILDERS AND DEVELOPERS DA APPROVED SITE RETAIN EXISTING AND BUILD

Set on a large 1,447sqm block in the desirable suburb of Woodbine, this property is an exceptional opportunity for builders and investors. With DA approval for semi-attached double story duplex and proposed plans available, it offers endless potential for development.

The existing renovated three-bedroom home is thoughtfully designed and ready to move in, making it perfect for immediate rental or living while you capitalize on the development opportunities. Its prime location is within walking distance to both Campbelltown and Leumeah railway stations, with easy access to the highway and Macarthur Square.

The backyard features a large double garage and a stunning undercover entertaining area, making this a complete package for buyers.

Features:

- 1,447sqm block with DA approval and proposed plans for duplex
- Renovated three-bedroom home with ceiling fans and built-in wardrobes
- Modern kitchen with Westinghouse appliances and ample storage
- Updated bathroom and toilet, move-in ready with no additional renovations needed
- Fully integrated ducted air-conditioning
- Walking distance to Campbelltown and Leumeah train stations
- Convenient access to the highway
- Close to Macarthur Square shopping center
- Spacious double garage and undercover outdoor entertaining area

Don't miss this builder or investor's dream! With DA approval and plans in place, the hard work has already been done. Secure your future today!

Agency Central believes that all the information contained herein is true & correct to the best of our ability however we encourage all interested parties to carry out their own enquiries.

3 BED | 1 BATH | 2 CAR

PRICE:

Contact Agent

OPEN FOR INSPECTION:

N/A

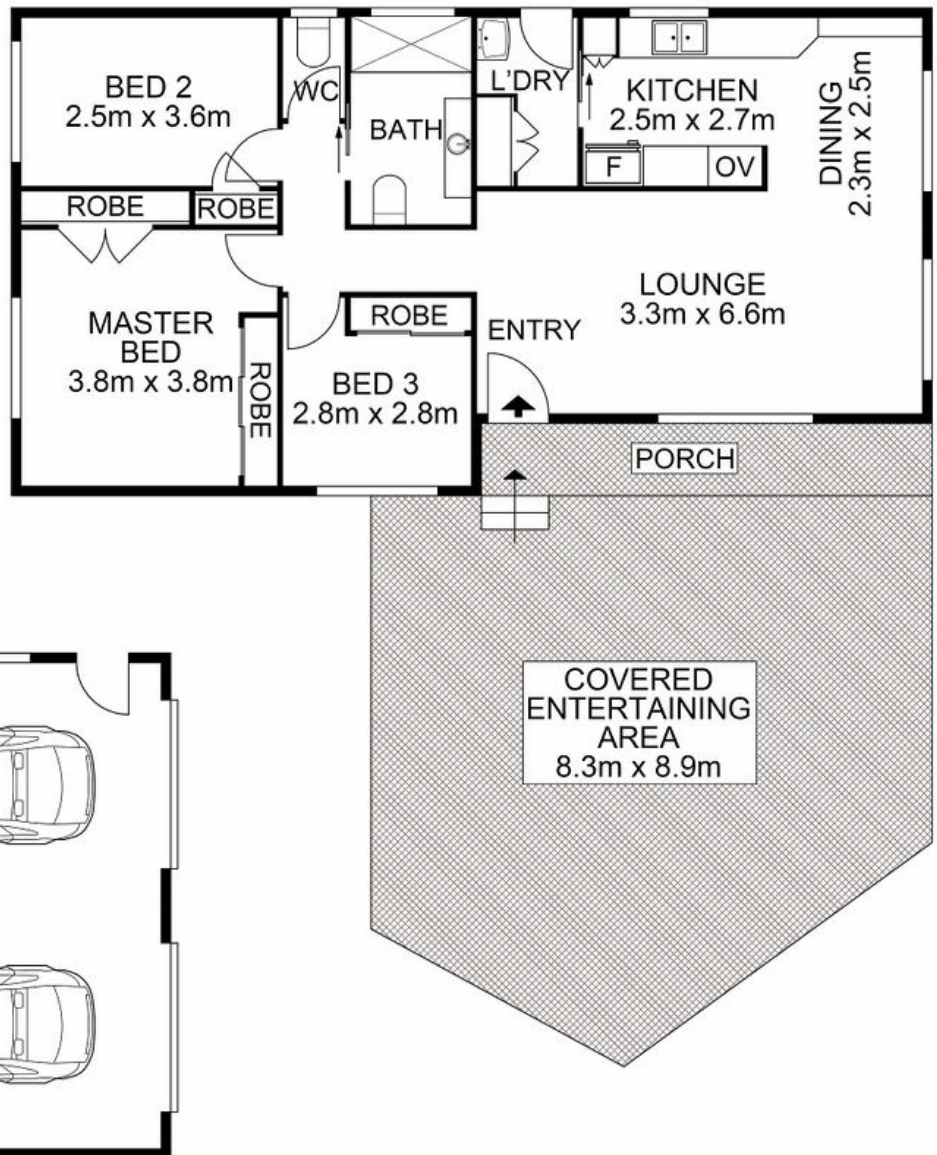


Huss Al Salemi

0411699419

huss@atrealty.com.au

www.agencycentral.com.au



 AGENCY

Disclaimer: Please note this floor plan is for marketing purposes and is to be used as a guide only. All dimensions are estimates only and may not be exact measurements.

11 Maroubra Crescent, Woodbine

Huss Al Salemi • All measurements are approximate • Drawn for marketing purposes only

0411699419

huss@atrealty.com.au

www.agencycentral.com.au

 @realty