



FOR SALE

A VERY RARE OPPORTUNITY TO LIVE OR INVEST ON LEVEL 55 OF THIS "SOLD OUT" LUXURIOUS FULLY INTERGRATED RESORT FACILITY !!! .

Presenting an exceptional opportunity to own or invest in one of Queensland's most sought-after locations: this stunning 2-bedroom, 2-bathroom (ensuite to master) apartment, complete with 1 x car park and a storage cage, located on the 55th floor of the prestigious Epsilon Residences Broadbeach.

This modern residence is finished to the highest standards, featuring premium European brand appliances, luxurious timber and carpet flooring, and beautifully crafted stone benchtops. The attention to detail and quality throughout the apartment is evident at every turn.

Boasting a coveted North-Western aspect, the apartment offers breathtaking views of the Surfers Paradise skyline, the sparkling ocean, and stunning sunsets over the Hinterland and canals—making this a true sanctuary to call home.

As Epsilon Residences nears completion, we've included the apartment's layout and artist impressions of the world-class facilities for you to explore.

The exclusive "Residential Only" amenities, spread across Levels 20 and 21, are second to none, and include:

- 23m Lap Pool
- Poolside lounge areas
- Outdoor BBQ and dining spaces
- Yoga/Pilates studio
- Steam room and sauna
- Fully equipped gym
- Private dining areas

Beyond the building, you'll enjoy an array of premium options within walking distance, including:

2 BED | 2 BATH | 1 CAR

PRICE:
\$1,199,000

OPEN FOR INSPECTION:
N/A



Lee Dixon
0401518081
lee@atrealty.com.au
www.atrealty.com.au

E P S I L O N
 THE STAR RESIDENCES
 GOLD COAST

2 Bed + 2 Bath
 Residence

Type: J
 Levels: 22 - 58

Internal Area: 73m²
 Balcony Area: 7m²
 Total Area: 80m²

Residence Number

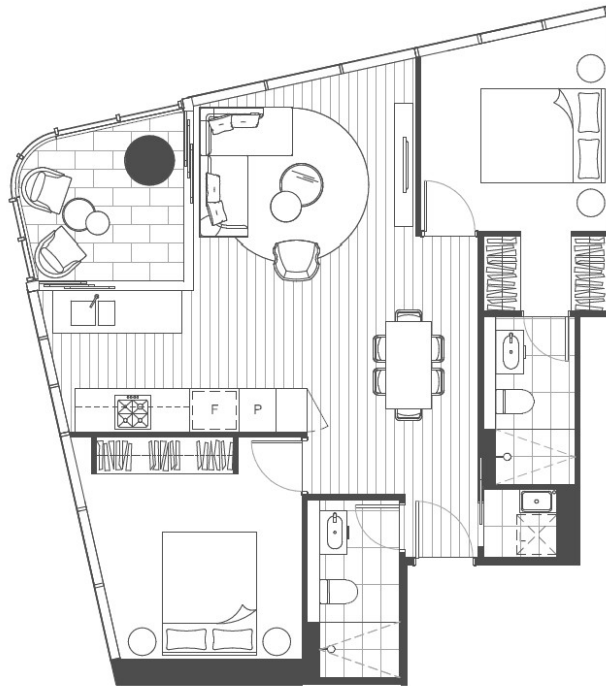
22203	23203	24203	25203
22303	23303	24303	25303
22403	23403	24403	25403
22503	23503	24503	25503
22603	23603	24603	25603
22703	23703	24703	25703
22803	23803	24803	25803
22903	23903	24903	
23003	24003	25003	
23103	24103	25103	

Location



DISCLAIMER

The contents of this page, including all drawings and plans, have been prepared on an indicative basis for illustrative purposes only, do not necessarily reflect the final design or layout, and are not necessarily to scale, and may be subject to change without notice. While the information in this page has been prepared with due care, to the maximum extent permitted by law, Destination Gold Coast Constructions (comprising Destination Gold Coast Pty Ltd, The Star Entertainment Group, The Star Constructions and Chew by Hook Enterprises) and their related entities, employees, officers, directors and agents do not make any representation or warranty about the accuracy or completeness of the information in this document and exclude any liability arising in connection with this document.



Disclaimer: Please note this floor plan is for marketing purposes and is to be used as a guide only. All dimensions are estimates only and may not be exact measurements.