



SOLD

MODERN 4-BEDROOM FAMILY HOME

- 4 spacious bedrooms with built-in wardrobes
- Master bedroom with ensuite
- Modern open-plan design
- Separate lounge, dining, and family rooms
- Fully fenced block (approx. 523m²)
- Great-sized open-plan kitchen with LED downlights
- Undercover outdoor entertaining area
- 2-car automatic garage with internal access
- Currently rented for \$670/week until 29/10/25

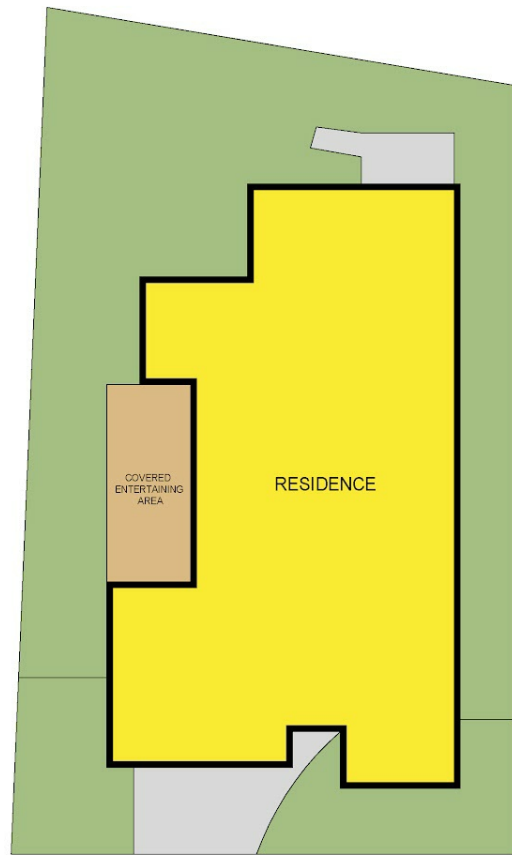
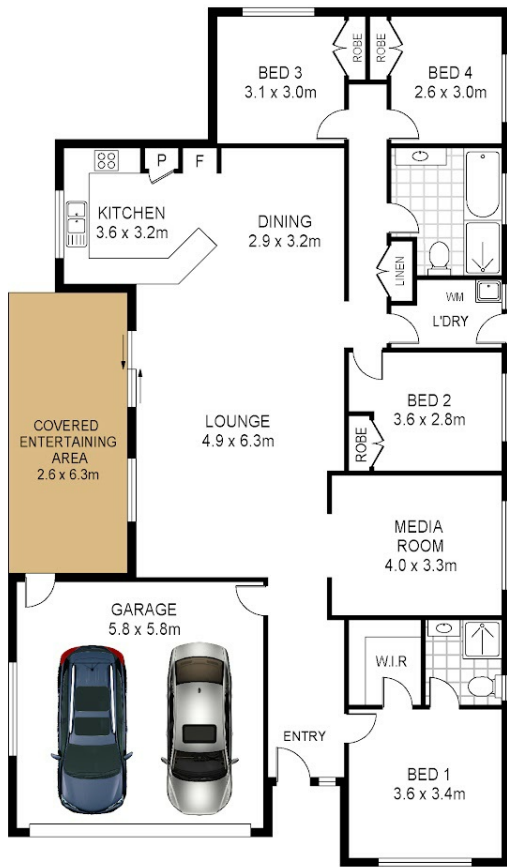
4 BED | 2 BATH | 2 CAR

PRICE:
\$840,000

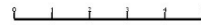
OPEN FOR INSPECTION:
N/A



Brad Barker
0413875833
bradbarker@atrealty.com.au
www.atrealty.com.au



Land Area: 523.1 sqm



Total Internal Floor Area: 172 sqm

Scale in metres. Indicative only. Dimensions are approximate. All information contained herein is gathered from sources we believe to be reliable. However we cannot guarantee its accuracy and interested persons should rely on their own enquiries.



7 Peony Place Hamlyn Terrace

Disclaimer: Please note this floor plan is for marketing purposes and is to be used as a guide only. All dimensions are estimates only and may not be exact measurements.