



SOLD

SPACIOUS FAMILY HOME ON 985M² – COMFORT, SPACE & ENDLESS POTENTIAL!

Step inside and feel instantly at home with ducted air conditioning throughout and the warmth of a central fireplace, creating a cosy, inviting atmosphere for every season.

At the front of the home, a formal living area welcomes you, alongside three well-sized bedrooms and the main bathroom—a perfect space for kids or guests, ensuring everyone has their own retreat.

At the heart of the home, the open-plan living area brings the family together, featuring:

- * A cosy fireplace – perfect for those chilly winter nights
- * A spacious dining & living zone – designed for family gatherings & entertaining
- * A well-equipped kitchen – with ample bench & storage space, making meal prep effortless

For parents seeking their own private sanctuary, the master suite is tucked away at the rear, offering:

- A generous walk-in robe
- Private ensuite with double vanities with your own bathtub to relax after a hard days work
- Sliding doors opening to the backyard – bringing in fresh air & natural light
- Direct access to a second large living space – ideal for a full parents' retreat or additional lounge

Year-Round Comfort & Lifestyle

This home is designed for effortless living, with:

- * Ducted air conditioning – keeping you cool in summer & warm in winter
- * A centrally located fireplace – adding warmth & charm to the living areas
- * A spacious backyard – offering endless possibilities for outdoor living

Whether you dream of adding a pool, a veggie garden, an outdoor entertainer's delight, this large, versatile block is ready for you to make all of this possible!

Why You'll Love Living in Thirlmere:

- * A peaceful, family-friendly community with a relaxed country feel
- * Local schools & childcare just minutes away

4 BED | 2 BATH | 3 CAR

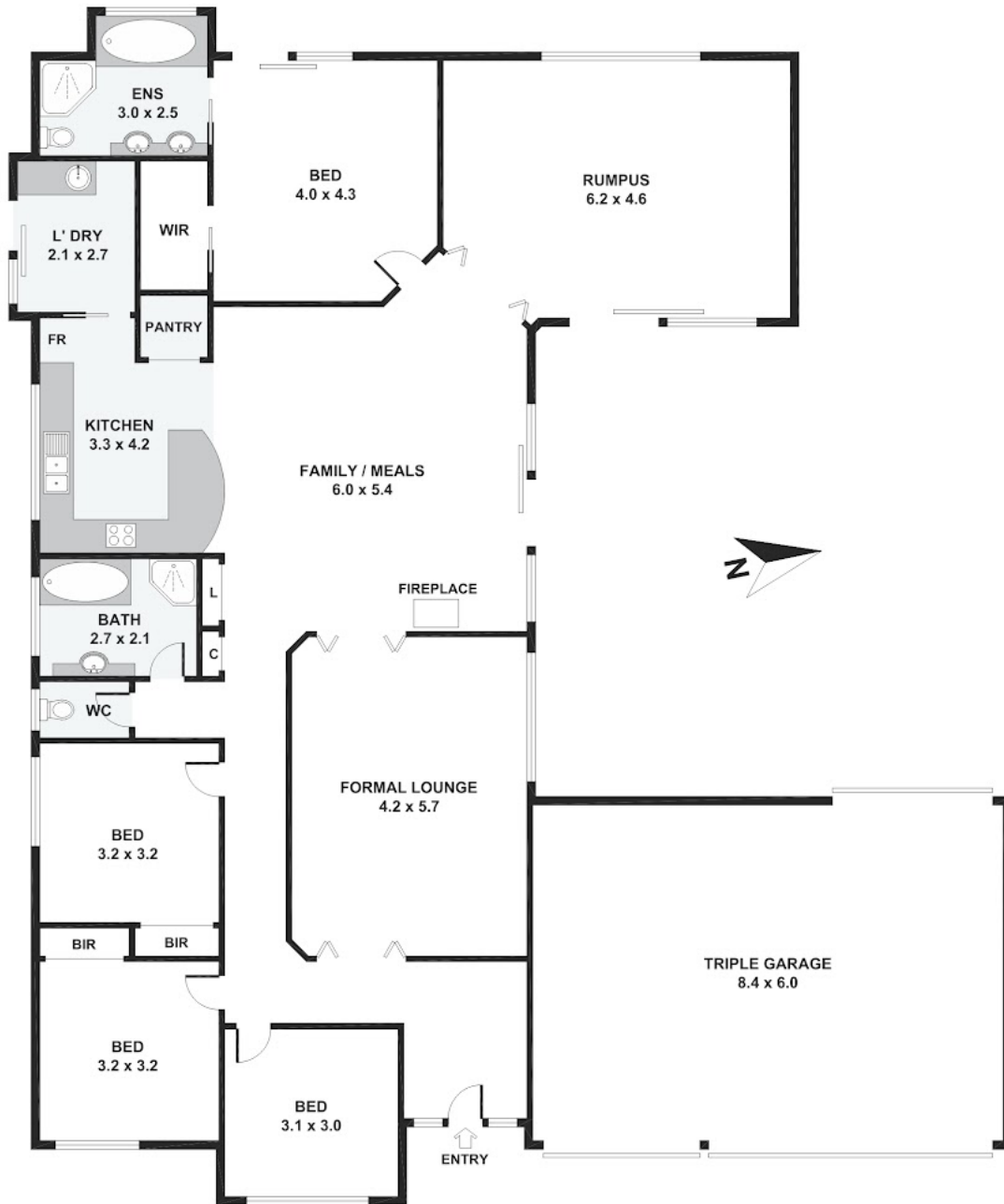
PRICE:
\$1,087,000

OPEN FOR INSPECTION:
N/A



Natasha Williams
0449281201
natasha@atrealty.com.au
soldindilly.com.au

308 Thirlmere Way, Thirlmere



Disclaimer: Please note this floor plan is for marketing purposes and is to be used as a guide only. All dimensions are estimates only and may not be exact measurements.