



FOR SALE

ATTRACTIVE FAMILY HOME IN A QUIET CUL-DE-SAC

This affordable family home is in the popular Conroe Heights neighborhood at the end of a quiet cul-de-sac.

The home sits on a large allotment measuring over 900 sq/m, with beautiful established trees, gardens, and lawns. There are three private garden areas where you can sit and relax, surrounded by trees and shrubs, giving you privacy from the busy world.

This attractive home has all the room for the modern family, with four spacious bedrooms, the main bedroom having a walk-in wardrobe and Ensuite.

Upon entering the home, you are greeted by a formal lounge and dining area, a perfect relaxing place.

A modern kitchen is the centerpiece of the home. It includes stainless steel appliances, a double-draw dishwasher, a movable island bench to accommodate different family events, heaps of cupboards, and soft-close drawers and doors, making it super functional.

A sliding window servery and sliding glass doors connect the kitchen to a large, covered patio area, including a fernery. The area has a soft, relaxed feel, perfect for entertaining family and friends.

Adjoining the kitchen is a huge family games room built to give the family extra space for the kids to have friends over and enjoy their own space.

It is large enough for an eight-ball table and a theatre room where people can enjoy sports or movies on a big-screen television.

The home includes a single garage under the main roof, a workshop and garden shed, gas heating, built-in robes in bedrooms three and four, storage in the ceiling with a retractable ladder, which would come in very handy, raised vegetable garden beds, and pop-up sprinklers. The home would certainly suit a growing family and is only a short walk to shops and childcare facilities.

Inspection will impress.

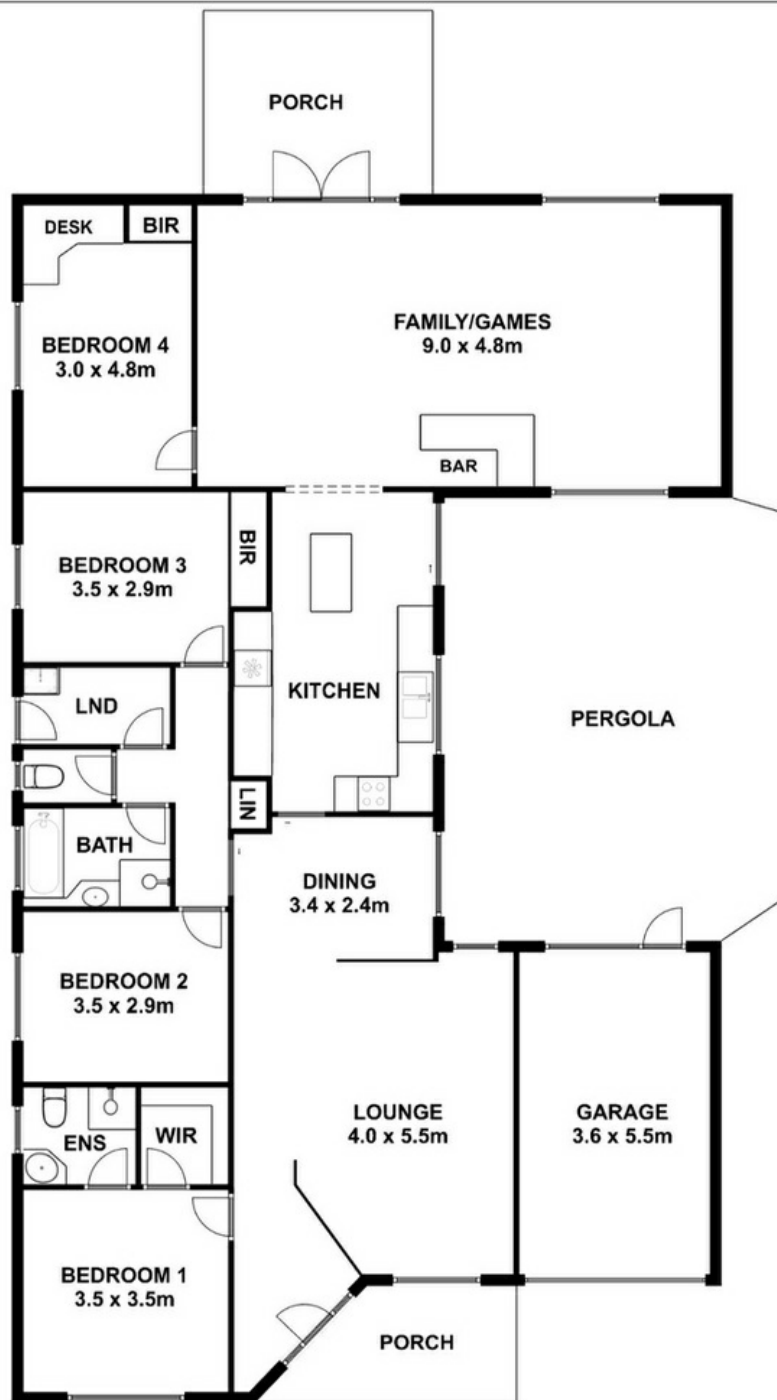
4 BED | 2 BATH | 1 CAR

PRICE:
\$595,000

OPEN FOR INSPECTION:
N/A



Peter Dempsey
0418854393
peterdempsey@atrealty.com.au
peterdempseyatrealty.com
RLA: 269823



Living :	167 SQ.M
Pergola :	44 SQ.M
Carport :	20 SQ.M
Porch :	15 SQ.M
TOTAL AREA :	246 SQ.M

This drawing is for illustration purpose only. All measurements are approximate only and information intended to be relied upon should be independently verified.

Disclaimer: Please note this floor plan is for marketing purposes and is to be used as a guide only. All dimensions are estimates only and may not be exact measurements.