

SOLD

2 BED, 2 BATH UNIT WITH POOL, BALCONY, SECURE PARKING, A/C. DON'T MISS OUT!

Look no further! This little gem is now available for sale in the heart of Southport and is ready to become your new sanctuary. This property offers the perfect blend of city and suburban living.

As you step into the bright and airy freshly painted unit, you'll be greeted by a spacious and modern open-plan living area. The two generous sized bedrooms each have built-in wardrobes and provide ample storage space, keeping your belongings organized and out of sight.

There are two modern bathrooms, an ensuite with double sinks for the master and a spacious bathroom with shower and bath for the second bedroom. The unit has its own separate laundry and space for an office.

Step out onto the balcony to relax and sip your morning coffee or enjoy a barbeque dinner.

Fancy a dip! Sunbathe, or simply lounge by the pool with a good book, the choice is yours. With secure tandem parking for two cars, you can have peace of mind knowing your vehicles are safe and protected. In addition, step out of your vehicle and straight into the lift that takes you safely to the second floor and into the unit.

To top it all off, this unit also comes with air conditioning, keeping you cool and comfortable during those hot summer days.

For the astute investor, the property is perfect to add to your portfolio with a great rental return and a Rental Appraisal is available on request.

FEATURES

- Freshly painted
- Modern bathrooms
- Built-in cupboards in bedrooms
- Ceiling fans throughout
- Airconditioning in main living area
- Balcony off living area
- Two tandem secure car spaces
- Cage for storage

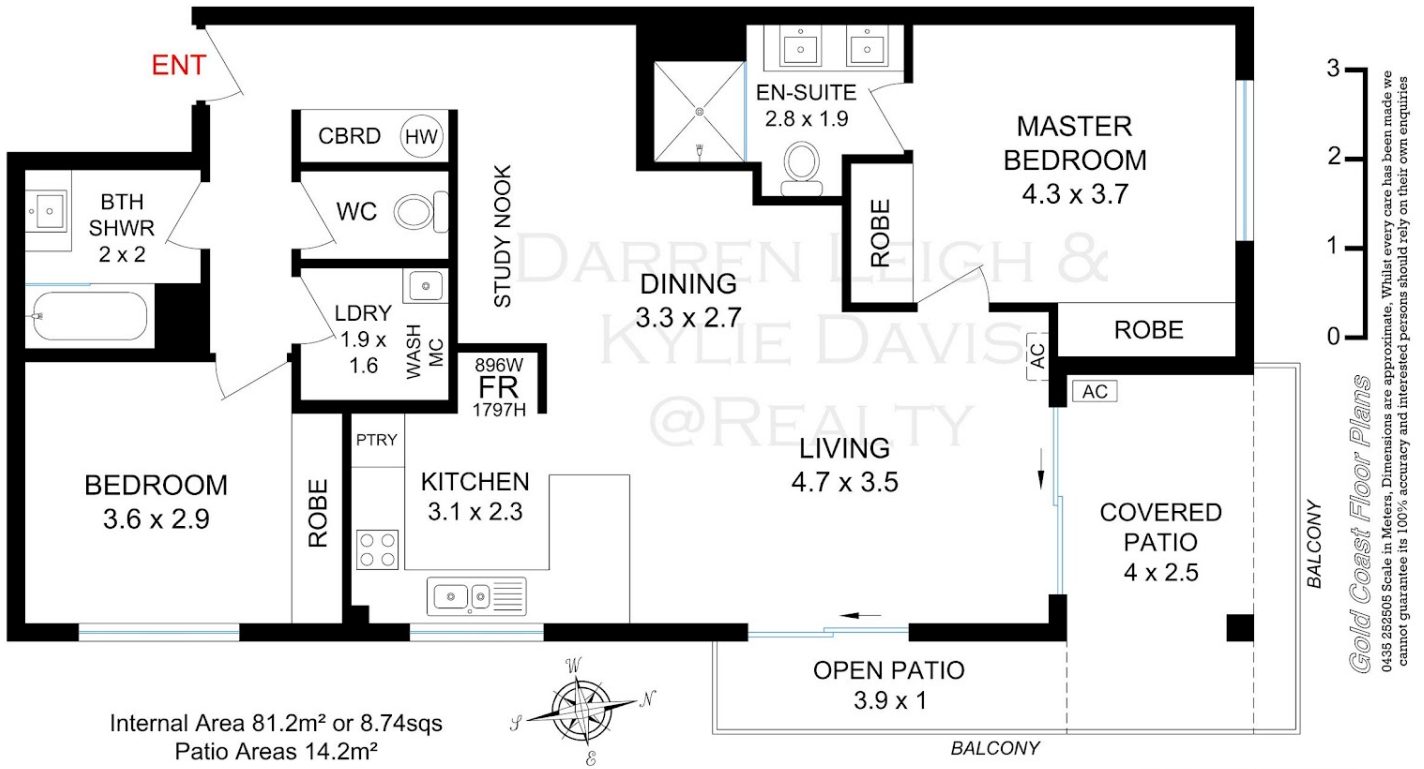
2 BED | 2 BATH | 2 CAR

PRICE:
\$670,000

OPEN FOR INSPECTION:
N/A



Darren Leigh
0422832537
darren@atrealty.com.au
www.atrealty.com.au



Internal Area 81.2m² or 8.74sqsq
Patio Areas 14.2m²

Secure Tandem Underground Parking 27m²
with
2.1m x 1.2 Storage Cage 2.5m²

Total Floor Area 124.9m² or 13.44sqsq

Onsite amenities: 10m x 4m
Swimming Pool

24/15 LLOYD STREET,
SOUTHPORT 4215

Marketed by Darren Leigh
& Kylie Davis

@realty

Tel: Darren 0422 832537
Tel: Kylie 0422 966257

Gold Coast Floor Plans
0435 252505 Scale in Meters. Dimensions are approximate. Whilst every care has been made we cannot guarantee its 100% accuracy and interested persons should rely on their own enquiries

Disclaimer: Please note this floor plan is for marketing purposes and is to be used as a guide only. All dimensions are estimates only and may not be exact measurements.