



FOR SALE

A PEACEFUL RETREAT IN A HIDDEN CORNER CLOSE TO NOOSA

Welcome to a roomy, clean, light, bright and low maintenance life style.

This home is an easy living and private opportunity offering:-
Open plan Kitchen, with stone bench tops, and Dining
Lounge with a gorgeous alfresco terrace.

Four bedrooms

Two Bathrooms

Large separate media / rumpus room

Double garage with internal access

Side access and hard stand for boats, caravans or trailers

Plenty of room for a pool

Private low maintenance gardens

Immaculately maintained

All on one level

As a family home it is perfect, around the corner from everything you need, a shopping centre, park reserve with walking/bike tracks which take you through to Tewantin and Noosaville, ideal walking distance for children going to Noosaville State School & St Teresa's Catholic College. Also a pleasant walk to Gympie Terrace and Noosa River .. Five minutes drive to Hastings Street and Noosa Heads

4 BED | 2 BATH | 2 CAR

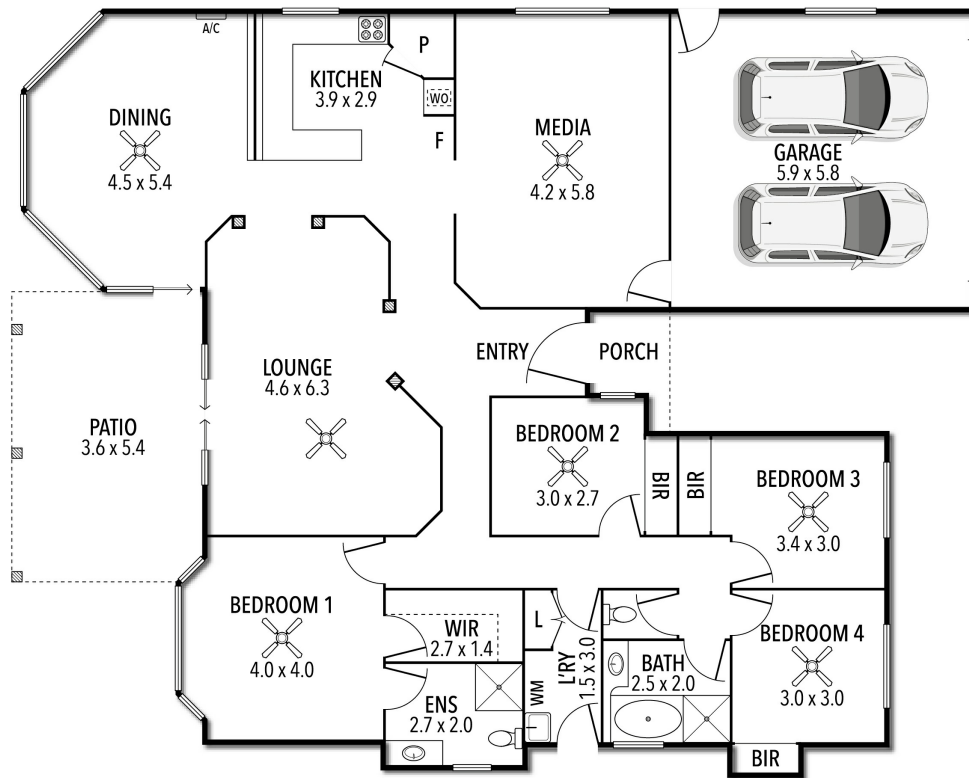
PRICE:
\$950,000

OPEN FOR INSPECTION:
N/A



Mike Sweeney
0417763499
mikesweeney@atrealty.com.au
www.atrealty.com.au

30 TALARA COURT, TEWANTIN



TOTAL APPROX. FLOOR AREA 235 SQ.M.

Whilst every attempt has been made to ensure accuracy of the floor plan contained here, measurements of doors, windows, rooms, and any other items are approximate and no responsibility is taken for any error, omission, or mis-statement.
This plan is for illustrative purposes only and should be used as such by any prospective purchaser. The services, systems and appliances shown have not been tested and no guarantee as to this operability or efficiency can be given.

Disclaimer: Please note this floor plan is for marketing purposes and is to be used as a guide only. All dimensions are estimates only and may not be exact measurements.