

SOLD

A RARE OPPORTUNITY - FIRST TIME EVER OFFERED TO THE MARKET

This is the first time this property has ever been offered. Built with love and care, and attention to detail. Your rare chance to enjoy luxury living in this stunning family home, adjacent to Noosa Waters. It is in a very tightly held location on an ultra-quiet street with great neighbours.

On a corner block, this immaculately presented home offers four bedrooms with an extensive master bedroom and ensuite plus with a second bedroom with two-way bathroom creating an ensuite for guests and two additional good sized bedrooms with built-ins.

The heart of the home is open plan living, dining and entertainment with a kitchen for those who love to cook! Gas cooktop, loads of storage and benchtops and talk to your guests! Loads of space to spread out and relax.

Outside its more features and fun with a large covered patio overlooking a brilliant swimming pool and rear gardens which provide total privacy. The pool has a heat pump to provide year round enjoyment and the garden is well established yet low-maintenance.

Additional features include ducted air-conditioning, ceiling fans, plantation blinds, 'Crimsafe' security screens, hard wired smoke alarms, built in vacuum system, 3kva solar, 15amp power available in garage, loft storage space and off street parking for caravan or boat. It is a secure property which you can lock up and leave safely if travelling.

This peaceful retreat is nestled within a natural green environment, close to the riverside precinct of Gympie Terrace and only minutes to fantastic cafes, restaurants and super shopping. Hastings Street, Noosa National Park, Noosa River and the best beaches, surf, fishing and boating are all within easy reach along with excellent schools, health care and so much more.

4 BED | 2 BATH | 2 CAR

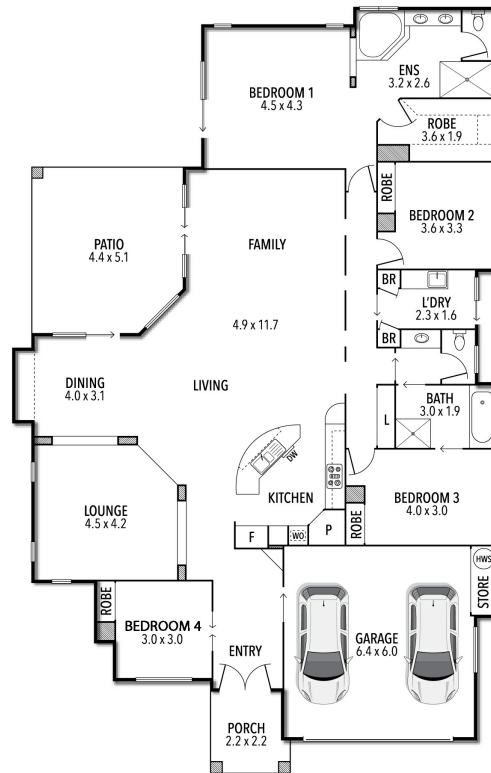
PRICE:
\$1,855,000

OPEN FOR INSPECTION:
N/A



Mike Sweeney
0417763499
mikesweeney@atrealty.com.au
www.atrealty.com.au

20 REGATTA CIRCUIT NOOSAVILLE



TOTAL APPROX. FLOOR AREA 272 SQ.M.

Whilst every attempt has been made to ensure accuracy of the floor plan contained here, measurements of doors, windows, rooms, and any other items are approximate and no responsibility is taken for any error, omission, or mis-statement.
This plan is for illustrative purposes only and should be used as such by any prospective purchaser. The services, systems and appliances shown have not been tested and no guarantee as to this operability or efficiency can be given.

Disclaimer: Please note this floor plan is for marketing purposes and is to be used as a guide only. All dimensions are estimates only and may not be exact measurements.