



FOR LEASE

FULLY FURNISHED LONG TERM LEASE IN THE PERFECT LOCATION!

Are you looking to step straight into a fully furnished house then welcome to your dream home.

Appliances and furniture: This house is fully equipped with ducted air conditioning, quality and comfortable bedding, beautiful quality furniture, dishwasher, fridge, electric oven, washing machine, dryer, microwave oven, kitchenware, kettle, TV, cabinets, 4 bar stools at the kitchen island, a 6-seat dining table, and outdoor chairs on the alfresco and many others.

~ Features Include ~

- 4 bedrooms with built in wardrobes
- The master with walk in wardrobe and ensuite
- Open plan kitchen, living and dining
- Tiles and hybrid flooring
- Ducted air-conditioning throughout and ceiling fans installed
- Main bathroom & separate toilet
- Double garage with laundry
- Covered alfresco is perfect for BBQ, or simply unwinding in nature's embrace
- Fully fenced and low maintenance yard

~ Location Features ~

- Close to the Coomera Westfield
- In between Pimpama Junction and Coomera town centre
- Short drive to Gainsborough Greens Golf Course, perfect for a weekend
- 15 minute drive to local Theme Parks, including Dreamworld, White Water World, Movie World
- 30 minute drive to Surfers Paradise, Seaworld, The Spit and other great areas for a weekend away

The fastest and easiest way to apply for this property is the link below:
<https://myatrealty.com/v2/properties/88295/listing/66050/applicants/application-form>

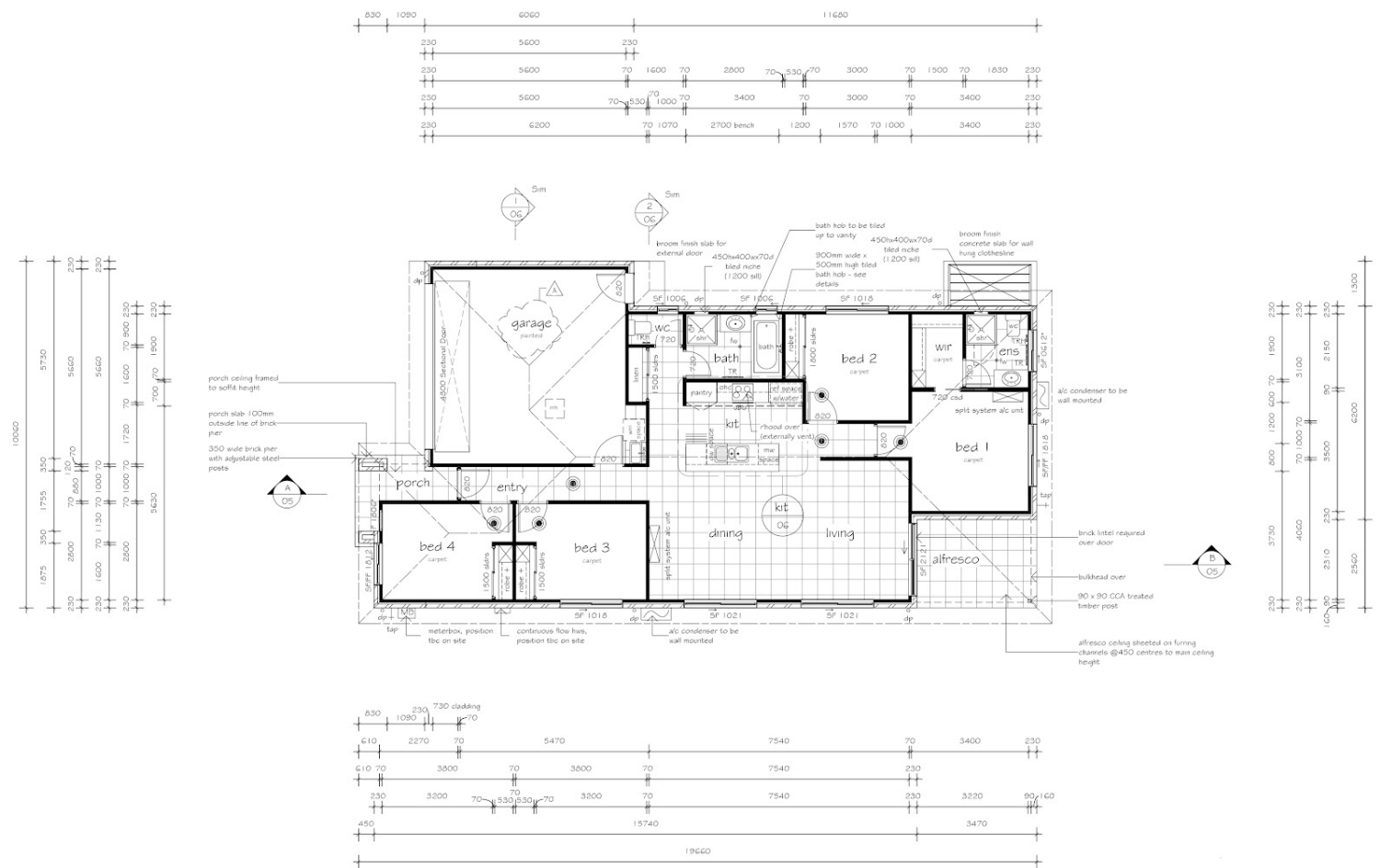
4 BED | 2 BATH | 2 CAR

PRICE:
\$900 per week

OPEN FOR INSPECTION:
N/A



John Yii
0420745505
johnyii@atrealty.com.au
www.atrealty.com.au



Disclaimer: Please note this floor plan is for marketing purposes and is to be used as a guide only. All dimensions are estimates only and may not be exact measurements.