



**SOLD**

## GREAT STARTER ON FABULOUS BLOCK

Wright Way Realty Jervis Bay introduces a wonderful opportunity for first home buyers, retirees, or those looking to enter the property market on the stunning NSW South Coast. Situated on the high side of the street and spanning a huge 765sqms this property offers plenty now, with further potential to expand.

- @ Open plan living, kitchen and dining with polished timber floors
- @ Currently 2 bedrooms with an easy option to make a third bedroom
- @ Single carport and wrap around covered patio/outdoor entertaining area
- @ Secure fully fenced parcel with a huge frontage of almost 20 metres
- @ Expansive low maintenance lawns with a detached garden shed
- @ Close proximity to shops, medical facilities and the Golf Club
- @ Chance for investors/builders to capitalise on superb locale
- @ Refresh, renovate, or knock down/rebuild, it's your choice

@ Call Glenn right now for more information, or to arrange an inspection.

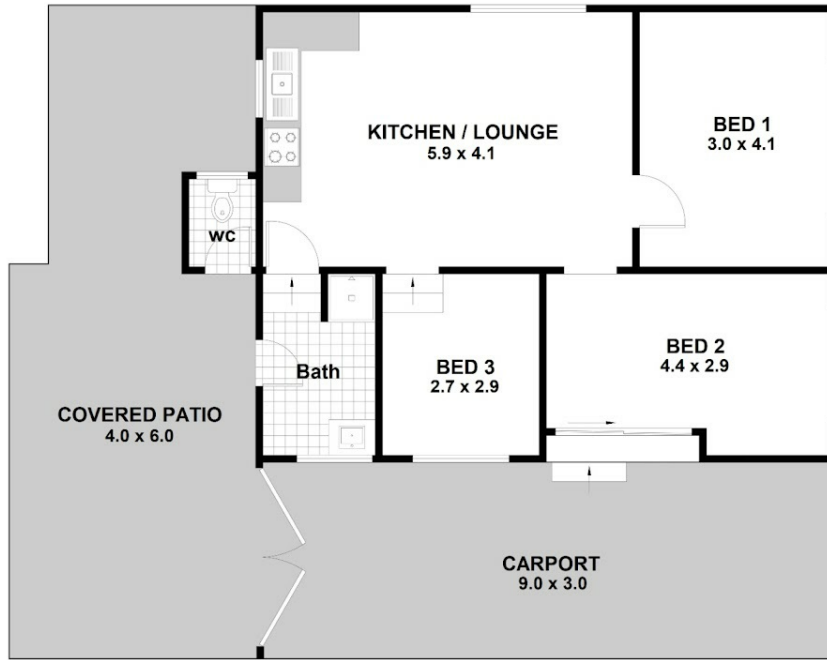
**2 BED | 1 BATH | 1 CAR**

**PRICE:**  
**\$550,000**

**OPEN FOR INSPECTION:**  
**N/A**



**Glenn Wright**  
**0408120866**  
glenn.wright@atrealty.com.au  
Wright Way Realty



**136 Mustang Drive, SANCTUARY POINT**



Scale is in Metres & indicative only & dimensions are only approximate.  
The information contained & gathered herein is we believe from sources to be reliable.  
We can not guarantee it's accuracy & persons should rely on their own enquiries.

Disclaimer: Please note this floor plan is for marketing purposes and is to be used as a guide only. All dimensions are estimates only and may not be exact measurements.