



SOLD

DUAL KEY GARDEN APARTMENT BEACHSIDE

What an outstanding position in an outstanding location. Mantra Resort Kingscliff occupies prime position on Salt Beach just down the road from the vibrant Kingscliff village linked by a beachfront walkway. 12 minutes South of Gold Coast Airport and 35 minutes North of Byron Bay this Tweed Coast hamlet has been an increasingly popular bolt hole for many holidaymakers since its inception in the early 2000's.

The resort itself has immaculate manicured gardens and many amenities to while away the time including 2 pools, outdoor spa, gym, 2 tennis courts, bar, award winning restaurants along with a tavern.

Apartment 5118/9 is a ground floor garden dual key facing beach in Mantra Resort and is at same level as reception and pool areas and close to the lift if needed. With the dual key configuration this 2 bedroom apartment offers enormous flexibility with the opportunity for owners to stay in one or both of the adjoining ensuited rooms (joined by a common foyer). If only staying in one the other room can keep renting and bringing in revenue. Located on the end on Wing 5 there is a degree of privacy and with its East facing sundrenched aspect over the lush lawns towards Salt Beach just past the resorts secure fence, the vista is sure to stimulate the senses.

- Fully furnished
- Laundry
- Full kitchen/Dishwasher
- Spa bath
- Secure underground parking

This is priced to sell so do not delay contact Brett today to avoid disappointment.

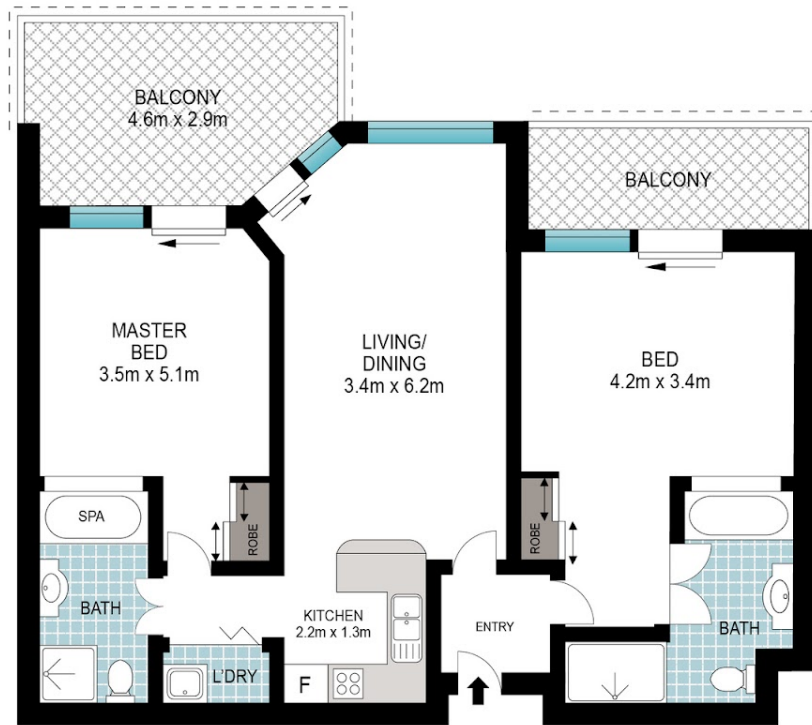
2 BED | 2 BATH | 1 CAR

PRICE:
\$595,000

OPEN FOR INSPECTION:
N/A



Brett Swales
0424507005
brettswales@atrealty.com.au
www.atrealty.com.au



Plans are indicative only. Dimensions are approximate. All information contained herein is gathered from sources we believe to be reliable. However, we cannot guarantee its accuracy and interested persons should rely on their own enquiries

5118_19 / 9 GUNNAMATTA DRIVE, KINGSCLIFF

Internal: 89 m² | External: 21 m² | Total: 110 m²

2 2

Disclaimer: Please note this floor plan is for marketing purposes and is to be used as a guide only. All dimensions are estimates only and may not be exact measurements.