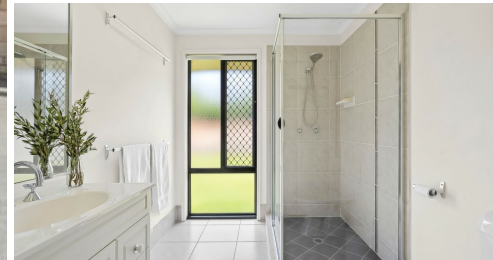


10 RINGTAIL PLACE, BLI BLI, QLD, 4560



LP REAL ESTATE  
welcome home



**SOLD**

## NEW LISTING!!

You are going to love this beauty!

### FABULOUS FEATURES!

- \*786m2 large block
- \*Solid Brick home
- \*DLUG and extra parking pad with side access.
- \*Raked Ceilings
- \*4 large bedrooms with built in wardrobes
- \*Master with ensuite and walk in robe
- \*Split system air conditioning
- \*Ceiling fans throughout
- \*Security screens
- \*Fully fenced yard
- \*Newly renovated and landscaped
- \*Multiple living areas
- \*Modern open plan kitchen and living
- \*Covered outdoor entertaining area
- \*Gorgeous Pool
- \*Fruit orchard
- \*Solar
- \*10,000L rainwater tank (with new pump installed) hooked up to greywater internally.
- \*Large Garden shed and extra parking bay, side access

Check out the open home times or contact Leanne on 0484 234 035 today to organise an inspection.

**4 BED | 2 BATH | 2 CAR**

**PRICE:**  
\$1,166,000

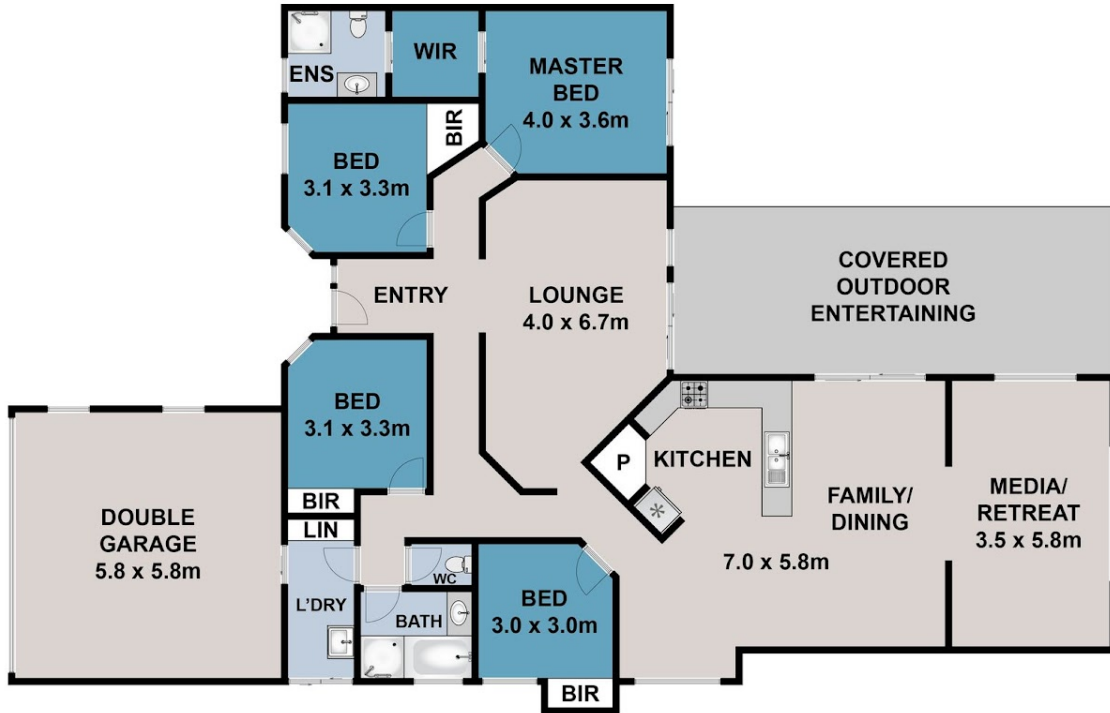
**OPEN FOR INSPECTION:**  
N/A



**Leanne Plummer**  
**0484234035**  
leanne.plummer@atrealty.com.au  
[www.atrealty.com.au](http://www.atrealty.com.au)



LP REAL ESTATE  
welcome home



This floor plan, including furniture and fixture measurements, is approximate and intended for illustration only.  
RJ Media does not guarantee its accuracy or layout.  
Direct all enquiries to the agent, vendor, or relevant party.

Disclaimer: Please note this floor plan is for marketing purposes and is to be used as a guide only. All dimensions are estimates only and may not be exact measurements.

