



**SOLD**

## PURE OPULENCE IN BEACHSIDE LOCALE

Pure opulence in beachside locale

Discover luxurious coastal living at 28 Quinn Street Catherine Hill Bay a double storey masterpiece designed to offer the ultimate in modern coastal living. With stunning ocean views from the top floor, a sparkling inground swimming pool and sophisticated finishes throughout this residence is a rare gem in a prized address. Property features include:

- 5 Spacious bedrooms: Each offering ample room, built in wardrobe's and ducted air conditioning plus views from the top level
- 3 luxe bathrooms and 4 toilets in total: Impeccably designed with free standing bath tub in the main also, the master bedroom and guest bedroom is equipped with ensuite
- Gourmet stone kitchen: With sleek stone bench tops and excellent quality appliances as well as a generous layout perfect for both casual dining and gourmet entertaining
- Ocean views: Enjoy a fantastic view over the sparkling coastline, providing a serene aspect to everyday living
- Sparkling inground pool + heating: A stunning oasis with travertine tiles and gazebo area plus heated pool adds an extra touch of luxury
- Double lock up garage with internal access: Generously sized space with the convenience of automatic door and internal access
- Expansive living areas: Enjoy your selection of 3 main living areas offering plenty of room for the whole family equipped with ducted air conditioning throughout

This exceptional home blends contemporary luxury with coastal charm in one of the most sought after beachside communities. Whether you are relaxing by the pool, enjoying the views or entertaining in style, this is a sanctuary like no other.

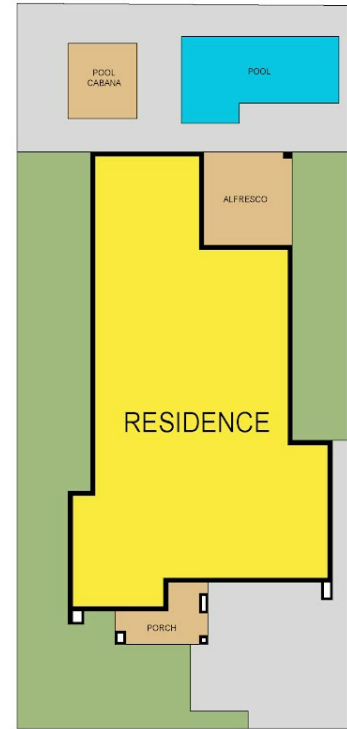
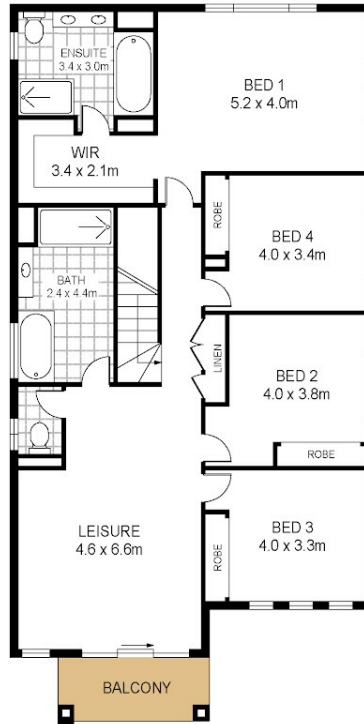
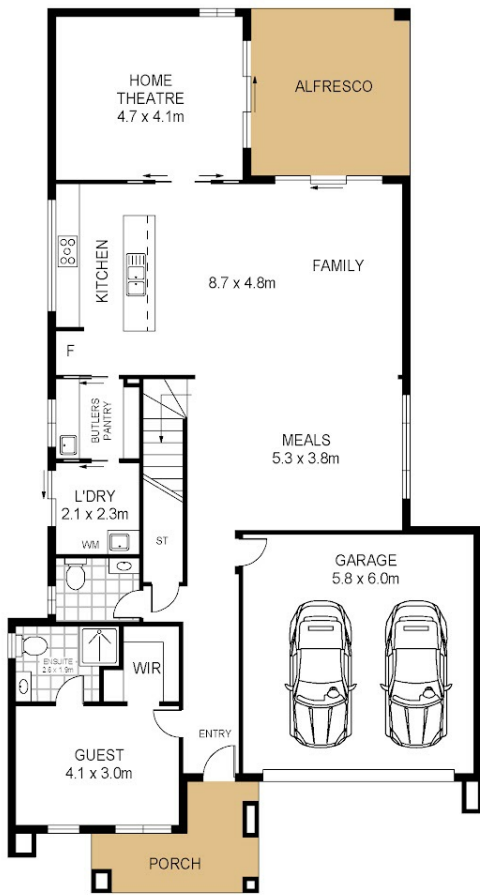
**5 BED | 3 BATH | 2 CAR**

**PRICE:**  
\$1,920,000

**OPEN FOR INSPECTION:**  
N/A



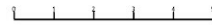
**Brendan James**  
**0422851384**  
brendanjames@atrealty.com.au  
[www.atrealty.com.au](http://www.atrealty.com.au)



GROUND FLOOR

28 Quinn Street  
Catherine Hill Bay

FIRST FLOOR



Total Internal Floor Area: 320 sqm

Scale in metres. Indicative only. Dimensions are approximate. All information contained herein is gathered from sources we believe to be reliable. However we cannot guarantee its accuracy and interested persons should rely on their own enquiries.



Disclaimer: Please note this floor plan is for marketing purposes and is to be used as a guide only. All dimensions are estimates only and may not be exact measurements.

**Brendan James**  
0422851384  
brendanjames@atrealty.com.au  
[www.atrealty.com.au](http://www.atrealty.com.au)

