

FOR SALE

7 GOSFORD CLOSE, GRAFTON, NSW, 2460

4  | 3  | 10 



MONUMENTAL MANSION ON A MASSIVE 2,698M2 (APPROX) - MUST BE SOLD!

PRICE: \$890,000 - \$950,000

OPEN FOR INSPECTION:
N/A

Gosford Close is a quiet cul-de-sac in Westlawn, not too far from the racecourse, schools and PCYC. This block is an absolute blessing for those who want unlimited space, with the convenience of being in town. Literally 3-4 times the size of an average allotment in Grafton, our 2,698m2 (approx.) is coming in close to 3/4 of an acre.

Commanding, colossal, breathtaking and demanding, are words that come to mind when describing the first impression from the street; the façade is astounding. The sealed driveway passing manicured gardens to the central block positioning.

I have always said that light and space sell. That is exactly what is on offer here. Often homes of this magnitude block natural light creating areas of dark and stagnant energy. This home illuminates light with an abundance of doors and windows. The bright white porcelain tiles downstairs and the timber floorboards upstairs have a reflective quality. Balconies front and back welcome the inside in, and the expansive void in the heart of the home, either end of the elegant stairwell, breathe. The air and light are nourishing.

Upstairs we have large open plan living and dining, with multiple retreats depending on the seasons. Whether it's the back patio with its N/E aspect perfect for winter mornings, the fireplace area for winter evenings, the lounge room for air-conditioned movies, the front veranda for morning tea or dinners, formal dining or hanging around the breakfast bar, there is choice here.

The kitchen offers a great deal of working space on stone benchtops, being the theme throughout

Kylie Swift // 0488 161 621

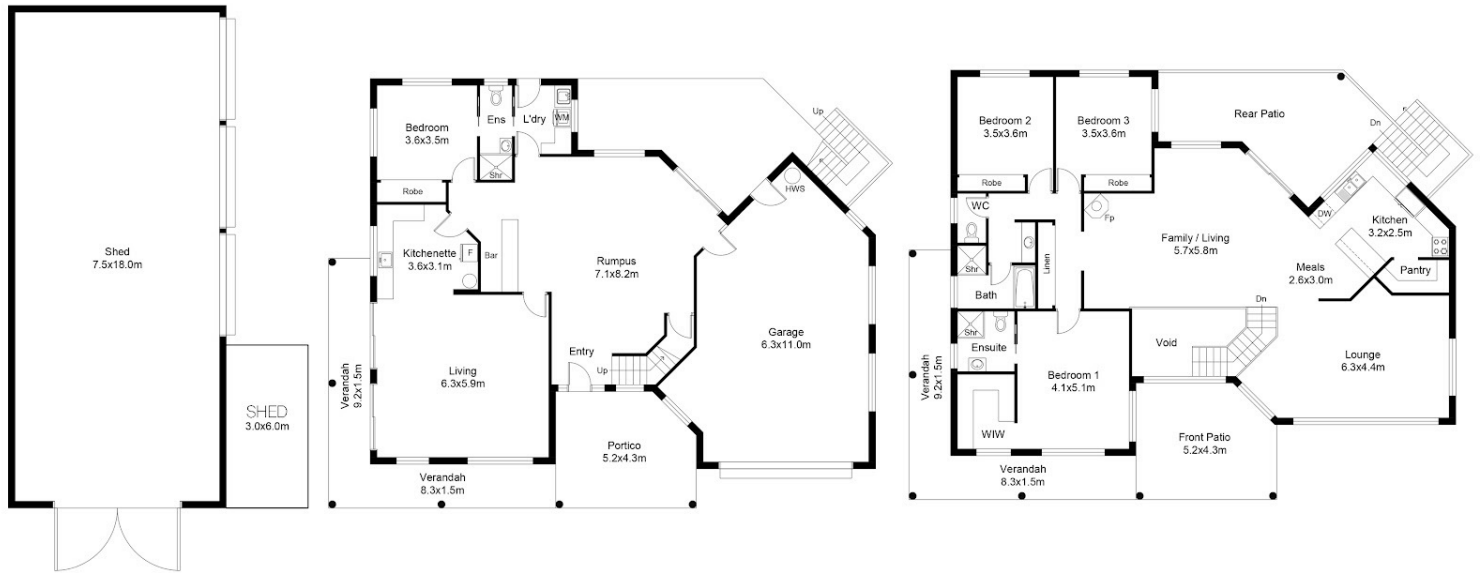
kylie@virtueproperty.com.au // www.virtueproperty.com.au



FOR SALE

7 GOSFORD CLOSE, GRAFTON, NSW, 2460

4 🚗 | 3 🛁 | 10 🚗



7 Gosford Close, Grafton Nsw

Whilst every attempt has been made to ensure the accuracy of the floor plan contained here, measurements of doors, windows, rooms and any other items are approximate and no responsibility is taken for any error, omission, or mis-statement. This plan is for illustrative purposes only and should be used as such by any prospective buyer.

Kylie Swift // 0488 161 621

kylie@virtueproperty.com.au // www.virtueproperty.com.au

