



**SOLD**

## SPACIOUS & ELEGANT 4-BEDROOM HOME WITH CHARACTER!

This beautifully designed 4-bedroom, 3-bathroom home offers the perfect combination of space, comfort, and style. With high ceilings throughout, multiple living areas, and stunning water glimpses, this home is perfect for families or those who love to entertain.

### Property Features:

#### Bedrooms & Bathrooms:

- 4 spacious bedrooms, 3 with built-in wardrobes and water glimpses.
- Master suite with private ensuite.
- Main bathroom featuring a bathtub.

#### Living & Dining:

- Large formal dining room.
- Generous living room with high ceilings.
- Open space sunroom for additional relaxation or entertaining.

#### Kitchen:

- Modern, thoughtfully designed kitchen with quality finishes.

#### Outdoor & Parking:

- Beautiful backyard with a gazebo, perfect for outdoor gatherings.
- Double car garage with drive-through access to an additional carport.

#### Prime Location:

- Peaceful and family-friendly neighborhood.
- Close to local shops, schools, and the water's edge.

Tom Twyford  
0414 002 753  
tomtwyford@atrealty.com.au

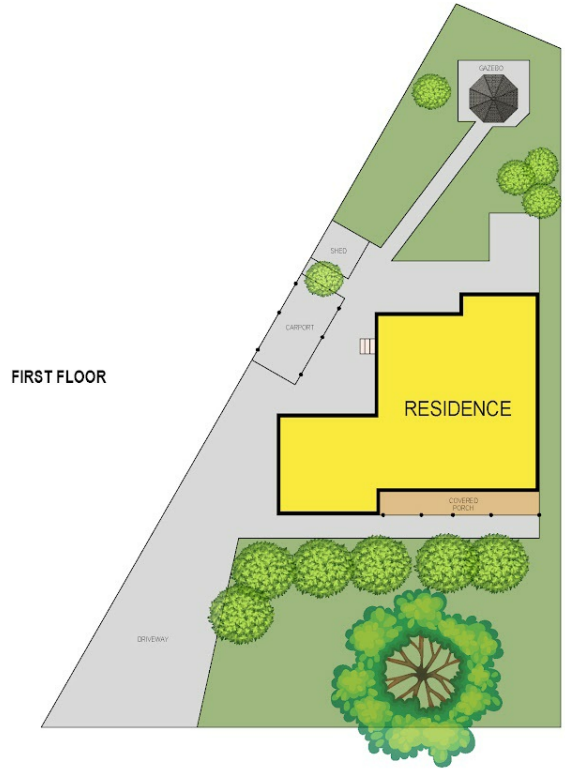
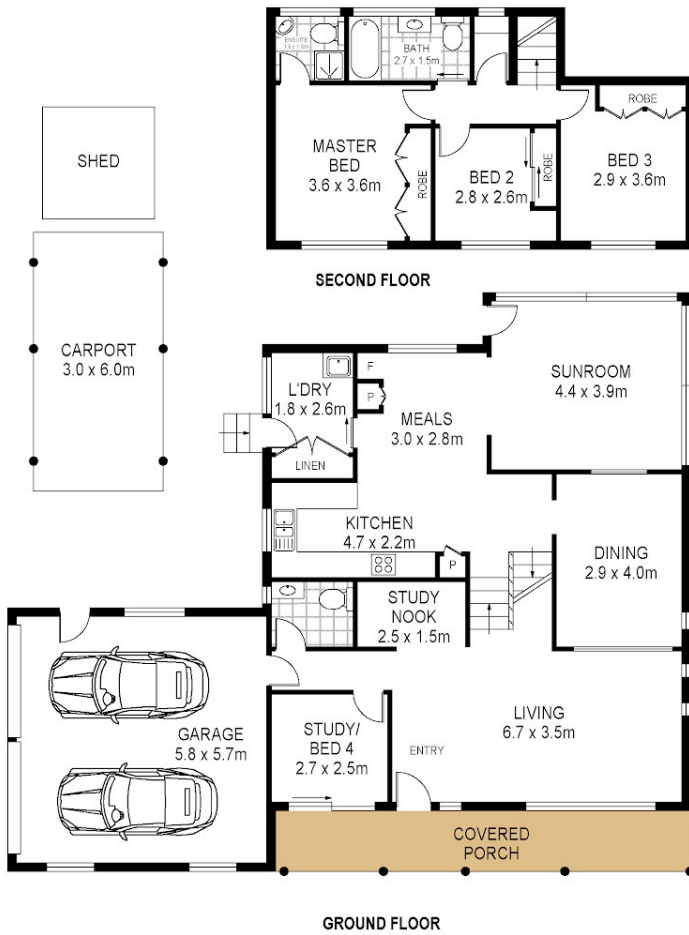
**4 BED | 3 BATH | 3 CAR**

**PRICE:**  
\$810,000

**OPEN FOR INSPECTION:**  
N/A



**Thomas Twyford**  
**0414002753**  
tomtwyford@atrealty.com.au  
[www.atrealty.com.au](http://www.atrealty.com.au)



21 Churchill Crescent  
Windermere Park

Total Internal Floor Area: 195 sqm  
Scale in metres indicative only. Dimensions are approximate. All information contained herein is gathered from sources we believe to be reliable. However we cannot guarantee its accuracy and interested persons should rely on their own enquiries



Disclaimer: Please note this floor plan is for marketing purposes and is to be used as a guide only. All dimensions are estimates only and may not be exact measurements.

